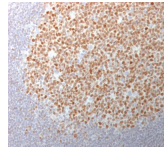


Bcl-6 Monoclonal Mouse Antibody (BCL6/1982)

This antibody recognizes a protein of 95 kDa, which is identified as Bcl-6.



Product Description

This antibody recognizes a protein of 95 kDa, which is identified as Bcl-6. Antibody to bcl-6 is helpful in a number of diagnostic settings: (1) In the differential diagnosis of small B-cell lymphoma. Follicular lymphoma will show bcl-6 (and CD10) positivity whereas other small B-cell lymphomas are usually negative. (2) Bcl-6 is an important prognostic marker in diffuse large B-cell lymphomas (DLBCL), where CD10, bcl-6 and MUM1/IRF4 are used to identify germinal center and activated B-cell phenotypes. (3) Bcl-6 can be valuable in distinguishing classical Hodgkin lymphoma from nodular lymphocyte predominant Hodgkin lymphoma (NLPHL). The Reed-Sternberg cells of classical Hodgkin lymphoma are bcl-6 negative whereas the large (L&H) cells of NLPHL are bcl-6 positive. In contrast, anti-Bcl-6 rarely stains mantle-cell lymphoma and MALT lymphoma. Primary antibodies are available purified, or with a selection of fluorescent CF® dyes and other labels. CF® dyes offer exceptional brightness and photostability. See the [CF® Dye Brochure](#) for more information. Note: Conjugates of blue fluorescent dyes like CF®405S and CF®405M are not recommended for detecting low abundance targets, because blue dyes have lower fluorescence and can give higher non-specific background than other dye colors. **Stock status:** Because Biotium offers a large number of antibody and conjugation options, primary antibody conjugates may be made to order. Typical lead times are up to one week for CF® dye and biotin conjugates, and up to 2-3 weeks for fluorescent protein and enzyme conjugates. Please email order@biotium.com to inquire about stock status and lead times before placing your order. **Catalog number key for antibody number 1982, Anti-Bcl-6 (BCL6/1982)**

Antibody #	prefix Conjugation	Ex/Em	Concentration	Storage Buffer
BNC04	CF®405S	404/431 nm	0.1 mg/mL	PBS, 0.1% BSA, 0.05% azide
BNC05	CF®405M	408/452 nm	0.1 mg/mL	PBS, 0.1% BSA, 0.05% azide
BNC06	CF®405L	395/545 nm	0.1 mg/mL	PBS, 0.1% BSA, 0.05% azide
BNC88	CF®488A	490/515 nm	0.1 mg/mL	PBS, 0.1% BSA, 0.05% azide
BNC14	CF®514	516/548 nm	0.1 mg/mL	PBS, 0.1% BSA, 0.05% azide
BNC43	CF®543	541/560 nm	0.1 mg/mL	PBS, 0.1% BSA, 0.05% azide
BNC55	CF®555	555/565 nm	0.1 mg/mL	PBS, 0.1% BSA, 0.05% azide
BNC68	CF®568	562/583 nm	0.1 mg/mL	PBS, 0.1% BSA, 0.05% azide
BNC94	CF®594	593/614 nm	0.1 mg/mL	PBS, 0.1% BSA, 0.05% azide
BNC40	CF®640R	642/662 nm	0.1 mg/mL	PBS, 0.1% BSA, 0.05% azide
BNC47	CF®647	650/665 nm	0.1 mg/mL	PBS, 0.1% BSA, 0.05% azide
BNC60	CF®660C	667/685 nm	0.1 mg/mL	PBS, 0.1% BSA, 0.05% azide
BNC61	CF®660R	663/682 nm	0.1 mg/mL	PBS, 0.1% BSA, 0.05% azide
BNC80	CF®680	681/698 nm	0.1 mg/mL	PBS, 0.1% BSA, 0.05% azide
BNC81	CF®680R	680/701 nm	0.1 mg/mL	PBS, 0.1% BSA, 0.05% azide
BNC00	CF®700	695/720 nm	0.1 mg/mL	PBS, 0.1% BSA, 0.05% azide
BNC70	CF®770	770/797 nm	0.1 mg/mL	PBS, 0.1% BSA, 0.05% azide
BNCR	R-PE (PE)	496, 546, 565/578 nm	0.1 mg/mL	PBS, 0.1% BSA, 0.05% azide
BNCA	APC	650/660 nm	0.1 mg/mL	PBS, 0.1% BSA, 0.05% azide
BNCP	PerCP	482/677 nm	0.1 mg/mL	PBS, 0.1% BSA, 0.05% azide
BNCB	Biotin	N/A	0.1 mg/mL	PBS, 0.1% BSA, 0.05% azide
BNCAP	Alkaline Phosphatase	N/A	0.1 mg/mL	PBS, 0.1% BSA, 0.05% azide
BNCH	Horseradish Peroxidase	N/A	0.1 mg/mL	PBS, 0.05% BSA, no azide
BNUB	Purified, with BSA	N/A	0.2 mg/mL	PBS, 0.05% BSA, 0.05% azide
BNUM	Purified, BSA-free	N/A	1 mg/mL	PBS, no BSA, no azide

References

Ree, H.J., et al. 2003. Hum. Pathol. 34: 610-616. [Garcia JF, et al. 2006. J. Histochem Cytochem. 54:31.]

Product attributes	
antibody-number	1982
Antibody number	1982
Reactivity (target)	Bcl-6
Antibody type	Primary
Host species	Mouse
Clonality	Monoclonal
Clone	BCL6/1982
Isotype	IgG1, kappa
Molecular weight	95 kDa
Synonyms	B-cell lymphoma 5 protein; B-Cell Lymphoma 6 Protein; BCL5; BCL6; BCL6A; cys his2 zinc finger transcription factor; Lymphoma Associated Zinc Finger Gene On Chromosome 3 (LAZ3); Zinc finger and BTB domain-containing protein 27 (ZBTB27); Zinc Finger Protein 51 (ZNF51); zinc finger transcription factor BCL6S
Human gene symbol	BCL6
Entrez gene ID	604
SwissProt	P41182
Unigene	478588
Immunogen	Recombinant human bcl-6 protein fragment (around aa256-389) (Exact sequence is proprietary)
Cellular localization	Nucleus
Species reactivity	Human
Applications	Immunohistology (formalin), ELISA
Positive control	Raji or Ramos cells. Tonsil or Hodgkin's lymphoma.
Shipping condition	Room temperature
Storage Conditions	Store at 2 to 8 °C, Protect fluorescent conjugates from light, Note: store BSA-free antibodies at -10 to -35 °C
Shelf life	Guaranteed for at least 24 months from date of receipt when stored as recommended
Regulatory status	For research use only (RUO)
Supplied As	Conjugates: 0.1 mg/mL in PBS/0.1% BSA/0.05% azide, HRP conjugates: 0.1 mg/mL in PBS/0.05% BSA, Purified, BSA-free: 1 mg/mL in PBS without azide, Purified: 0.2 mg/mL in PBS/0.05% BSA/0.05% azide
Validated in protein array	Monospecific
Antibody research areas	Apoptosis, Cancer