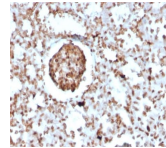


## BrdU Recombinant Monoclonal Rabbit Antibody (BRD2888R)



### Product Description

Bromodeoxyuridine (BrdU) is a synthetic nucleoside thymidine analog. It is commonly used to detect proliferation in cells. In cells cultured in the presence of BrdU, BrdU will incorporate into newly synthesized DNA during S-phase. Antibodies specific for BrdU can then be used to detect replicated DNA. This antibody is available purified, with BSA (0.2 mg/mL) or purified, BSA-free (1 mg/mL).

### Product attributes

<b>Antibody number</b>	#2888
<b>Antibody reactivity (target)</b>	BrdU
<b>Antibody type</b>	Primary
<b>Host species</b>	Rabbit
<b>Clonality</b>	Recombinant Monoclonal
<b>Clone</b>	BRD2888R
<b>Isotype</b>	IgG
<b>Molecular weight</b>	307Da
<b>Synonyms</b>	Bromodeoxyuridine; 5-bromo-2-deoxyuridine
<b>Human gene symbol</b>	Not Applicable
<b>Entrez gene ID</b>	Not Applicable
<b>SwissProt</b>	Not Applicable
<b>Unigene</b>	Not Applicable
<b>Immunogen</b>	Bromodeoxyuridine (BrdU) conjugated to KLH
<b>Verified antibody applications</b>	IHC (FFPE) (verified)
<b>Antibody target cellular localization</b>	Nucleus
<b>Species reactivity</b>	All species
<b>Positive control</b>	Cells grown in presence of BrdU or tissues from experimental animals injected with BrdU
<b>Shipping condition</b>	Room temperature
<b>Storage Conditions</b>	Store at 2 to 8 °C, Protect fluorescent conjugates from light, Note: store BSA-free antibodies at -10 to -35 °C
<b>Shelf life</b>	Guaranteed for at least 24 months from date of receipt when stored as recommended
<b>Regulatory status</b>	For research use only (RUO)
<b>Antibody/conjugate formulation</b>	Conjugates: 0.1 mg/mL in PBS/0.1% BSA/0.05% azide, HRP conjugates: 0.1 mg/mL in PBS/0.05% BSA, Purified: 0.2 mg/mL in PBS/0.05% BSA/0.05% azide, Purified, BSA-free: 1 mg/mL in PBS without azide
<b>Antibody research areas</b>	Cancer, Cell cycle