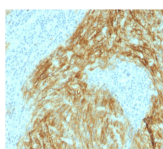


CD21 Monoclonal Mouse Antibody (CR2/1952)



Product Description

This antibody recognizes a protein of 140 kDa, which is identified as the complement receptor 2 (CR2)/CD21. This protein is expressed strongly on mature B cells, follicular dendritic cells and weakly on immature thymocytes and T lymphocytes. In B-cell ontogeny, CD21 appears after the pre-B-stage, is maintained during peripheral B-cell development and is lost upon terminal differentiation into plasma cells. CD21 expression is also gradually lost after stimulation of B cells in vitro. CD21 functions as receptor for C3d, C3dg and iC3b Complement components, for EBV and for IFN α . CD21 binds to CD23 and associates with CD19, CD81 and Leu13 to form a large signal-transduction complex involved in B cell activation.

Primary antibodies are available purified, or with a selection of fluorescent CF $\text{\textcircled{R}}$ dyes and other labels. CF $\text{\textcircled{R}}$ dyes offer exceptional brightness and photostability. See the [CF \$\text{\textcircled{R}}\$ Dye Brochure](#) for more information. Note: Conjugates of blue fluorescent dyes like CF $\text{\textcircled{R}}$ 405S and CF $\text{\textcircled{R}}$ 405M are not recommended for detecting low abundance targets, because blue dyes have lower fluorescence and can give higher non-specific background than other dye colors.

Stock status: Because Biotium offers a large number of antibody and conjugation options, primary antibody conjugates may be made to order. Typical lead times are up to one week for CF $\text{\textcircled{R}}$ dye and biotin conjugates, and up to 2-3 weeks for fluorescent protein and enzyme conjugates. Please email order@biotium.com to inquire about stock status and lead times before placing your order.

Catalog number key for antibody number 1952, Anti-CD21 (CR2/1952)

Product attributes

Antibody number	#1952
Antibody reactivity (target)	CD21
Antibody type	Primary
Host species	Mouse
Clonality	Monoclonal
Clone	CR2/1952
Isotype	IgG1, kappa
Molecular weight	140 kDa
Synonyms	CD21; Complement C3d receptor (C3DR); Complement Receptor type 2 (CR2); CVID7; EBV receptor; EBV-R; Epstein-Barr virus receptor; EVBR; SLEB9
Human gene symbol	CR2
Entrez gene ID	1380
SwissProt	P20023
Unigene	445757
Immunogen	Recombinant fragment (around aa 44-196) of human CR2 (CD21) protein (exact sequence is proprietary)
Verified antibody applications	IHC (FFPE) (verified)
Antibody target cellular localization	Plasma membrane
Species reactivity	Human
Positive control	WEHI-231 cells and Tonsil
Shipping condition	Room temperature
Storage Conditions	Store at 2 to 8 °C. Protect fluorescent conjugates from light. Note: store BSA-free antibodies at -10 to -35 °C
Shelf life	Guaranteed for at least 24 months from date of receipt when stored as recommended
Regulatory status	For research use only (RUO)
Antibody/conjugate formulation	Conjugates: 0.1 mg/mL in PBS/0.1% BSA/0.05% azide, HRP conjugates: 0.1 mg/mL in PBS/0.05% BSA, Purified: 0.2 mg/mL in PBS/0.05% BSA/0.05% azide, Purified, BSA-free: 1 mg/mL in PBS without azide
Validated in protein array	Monospecific
Antibody research areas	Immunology
Product origin	Product may contain either bovine serum albumin (BSA) from bovine serum (<i>Bos taurus</i>), or recombinant BSA produced in Chinese hamster ovary cells. Inquire for the specific lot.
Cell/tissue expression	Antigen presenting cells, B-cells, Lymphocytes

Antibody # prefix	Conjugation	Ex/Em (nm)	Laser line	Detection channel	Dye Features
BNC04	CF $\text{\textcircled{R}}$ 405S	404/431	405	DAPI (microscopy), AF405	CF$\text{\textcircled{R}}$405S Features
BNC88	CF $\text{\textcircled{R}}$ 488A	490/515	488	GFP, FITC	CF$\text{\textcircled{R}}$488A Features
BNC68	CF $\text{\textcircled{R}}$ 568	562/583	532, 561	RFP, TRITC	CF$\text{\textcircled{R}}$568 Features
BNC94	CF $\text{\textcircled{R}}$ 594	593/614	561	Texas Red $\text{\textcircled{R}}$	CF$\text{\textcircled{R}}$594 Features
BNC40	CF $\text{\textcircled{R}}$ 640R	642/662	633-640	Cy $\text{\textcircled{R}}$ 5	CF$\text{\textcircled{R}}$640R Features
BNC47	CF $\text{\textcircled{R}}$ 647	650/665	633-640	Cy $\text{\textcircled{R}}$ 5	CF$\text{\textcircled{R}}$647 Features
BNC74	CF $\text{\textcircled{R}}$ 740	742/767	633-685	775/50	CF$\text{\textcircled{R}}$740 Features
BNCB	Biotin	N/A	N/A	N/A	
BNUB	Purified	N/A	N/A	N/A	
BNUM	Purified, BSA-free	N/A	N/A	N/A	

Alexa Fluor, Pacific Blue, Pacific Orange, and Texas Red are trademarks or registered trademarks of Thermo Fisher Scientific; Cy is a registered trademark of Cytiva; IRDye, LI-COR, and Odyssey are registered trademarks of LI-COR Bioscience.

This datasheet was generated on December 23, 2024 at 04:29:27 PM. Visit product page to check for updated information before use.

Product link: <https://biotium.com/product/cd21-monoclonal-mouse-antibody-cr2-1952/>