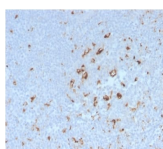


# CD68 Recombinant Monoclonal Rabbit Antibody (C68/2908R)



## Product Description

This antibody recognizes a glycoprotein of 110 kDa, which is identified as CD68. It is important for identifying macrophages in tissue sections. It stains macrophages in a wide variety of human tissues, including Kupffer cells and macrophages in the red pulp of the spleen, in lamina propria of the gut, in lung alveoli, and in bone marrow. It reacts with myeloid precursors and peripheral blood granulocytes. It also reacts with plasmacytoid T cells, which are supposed to be of monocyte/macrophage origin. It shows strong granular cytoplasmic staining of chronic and acute myeloid leukemia and also reacts with rare cases of true histiocytic neoplasia. Lymphomas are negative or show few granules.

Primary antibodies are available purified, or with a selection of fluorescent CF® dyes and other labels. CF® dyes offer exceptional brightness and photostability. See the [CF® Dye Brochure](#) for more information. Note: Conjugates of blue fluorescent dyes like CF®405S and CF®405M are not recommended for detecting low abundance targets, because blue dyes have lower fluorescence and can give higher non-specific background than other dye colors.

**Stock status:** Because Biotium offers a large number of antibody and conjugation options, primary antibody conjugates may be made to order. Typical lead times are up to one week for CF® dye and biotin conjugates, and up to 2-3 weeks for fluorescent protein and enzyme conjugates. Please email [order@biotium.com](mailto:order@biotium.com) to inquire about stock status and lead times before placing your order.

**Catalog number key for antibody number 2908, Anti-CD68 (C68/2908R)**

Call us : [800-304-5357](tel:800-304-5357)

## Product attributes

|  |  |
|--|--|
| <b>Antibody number</b>                       | #2908  |
| <b>Antibody reactivity (target)</b>          | CD68   |
| <b>Antibody type</b>                         | Primary  |
| <b>Host species</b>                          | Rabbit   |
| <b>Clonality</b>                             | Monoclonal, Recombinant Monoclonal   |
| <b>Clone</b>                                 | C68/2908R  |
| <b>Isotype</b>                               | IgG, kappa   |
| <b>Molecular weight of antigen</b>           | ~110 kDa   |
| <b>Synonyms</b>                              | GP110, LAMP4, Microsialin, Macrosialin, SCARD1, Scavenger Receptor Class D Member-1  |
| <b>Human gene symbol</b>                     | CD68   |
| <b>Entrez gene ID</b>                        | 968  |
| <b>SwissProt</b>                             | P34810   |
| <b>Unigene</b>                               | 647419   |
| <b>Immunogen</b>                             | Recombinant full-length human LAMP4 protein  |
| <b>Antibody target cellular localization</b> | Plasma membrane  |
| <b>Verified antibody applications</b>        | IHC (FFPE) (verified), WB (verified)   |
| <b>Species reactivity</b>                    | Human  |
| <b>Antibody application notes</b>            | Higher concentration may be required for direct detection using primary antibody conjugates than for indirect detection with secondary antibody. Immunohistology (formalin): 0.5-1 ug/mL for 30 minutes at RT. Staining of formalin-fixed tissues is enhanced by boiling tissue sections in 10 mM citrate buffer pH 6.0 for 10-20 minutes followed by cooling at RT for 20 minutes. Optimal dilution for a specific application should be determined by user |
| <b>Positive control</b>                      | Tonsil, lymph node, or spleen  |
| <b>Shipping condition</b>                    | Room temperature   |
| <b>Storage Conditions</b>                    | Store at 2 to 8 °C, Protect fluorescent conjugates from light, Note: store BSA-free antibodies at -10 to -35 °C  |
| <b>Shelf life</b>                            | Guaranteed for at least 24 months from date of receipt when stored as recommended  |
| <b>Regulatory status</b>                     | For research use only (RUO)  |
| <b>Antibody/conjugate formulation</b>        | Conjugates: 0.1 mg/mL in PBS/0.1% BSA/0.05% azide, HRP conjugates: 0.1 mg/mL in PBS/0.05% BSA, Purified: 0.2 mg/mL in PBS/0.05% BSA/0.05% azide, Purified, BSA-free: 1 mg/mL in PBS without azide  |
| <b>Antibody research areas</b>               | Immunology   |
| <b>Product origin</b>                        | Product may contain either bovine serum albumin (BSA) from bovine serum (Bos taurus), or recombinant BSA produced in Chinese hamster ovary cells. Inquire for the specific lot.  |
| <b>Cell/tissue expression</b>                | Monocytes/macrophages  |
| <b>Tumor expression</b>                      | Leukemia/lymphoma  |

| Antibody # prefix | Conjugation        | Ex/Em (nm) | Laser line | Detection channel        | Dye Features                     |
|-------------------|--------------------|------------|------------|--------------------------|----------------------------------|
| BNC04             | CF®405S            | 404/431    | 405        | DAPI (microscopy), AF405 | <a href="#">CF®405S Features</a> |
| BNC88             | CF®488A            | 490/515    | 488        | GFP, FITC                | <a href="#">CF®488A Features</a> |
| BNC68             | CF®568             | 562/583    | 532, 561   | RFP, TRITC               | <a href="#">CF®568 Features</a>  |
| BNC94             | CF®594             | 593/614    | 561        | Texas Red®               | <a href="#">CF®594 Features</a>  |
| BNC40             | CF®640R            | 642/662    | 633-640    | Cy®5                     | <a href="#">CF®640R Features</a> |
| BNC47             | CF®647             | 650/665    | 633-640    | Cy®5                     | <a href="#">CF®647 Features</a>  |
| BNC74             | CF®740             | 742/767    | 633-685    | 775/50                   | <a href="#">CF®740 Features</a>  |
| BNCB              | Biotin             | N/A        | N/A        | N/A                      |                                  |
| BNUB              | Purified           | N/A        | N/A        | N/A                      |                                  |
| BNUM              | Purified, BSA-free | N/A        | N/A        | N/A                      |                                  |

Alexa Fluor, Pacific Blue, Pacific Orange, and Texas Red are trademarks or registered trademarks of Thermo Fisher Scientific; Cy is a registered trademark of Cytiva; IRDye, LI-COR, and Odyssey are registered trademarks of LI-COR Bioscience.

This datasheet was generated on June 12, 2026 at 02:55:43 PM. Visit product page to check for updated information before use. Product link: <https://biotium.com/product/cd68-recombinant-monoclonal-rabbit-antibody-c68-2908r/>