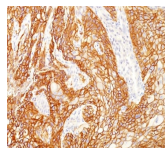


EGFR Monoclonal Mouse Antibody (GFR/2341)



Product Description

This MAb recognizes a protein of 170 kDa, identified as EGFR. EGFR is type I receptor tyrosine kinase with sequence homology to erbB-1, -2, -3 -4 or HER-1, -2, -3 -4. It binds to Epidermal Growth Factor (EGF), Transforming Growth Factor- α (TGF- α), Heparin-binding EGF (HB-EGF), amphiregulin, betacellulin and epiregulin. EGFR is overexpressed in tumors of breast, brain, bladder, lung, gastric, head & neck, esophagus, cervix, vulva, ovary, and endometrium. It is predominantly present in squamous cell carcinomas. Primary antibodies are available purified, or with a selection of fluorescent CF \circledR dyes and other labels. CF \circledR dyes offer exceptional brightness and photostability. See the [CF \$\circledR\$ Dye Brochure](#) for more information. Note: Conjugates of blue fluorescent dyes like CF \circledR 405S and CF \circledR 405M are not recommended for detecting low abundance targets, because blue dyes have lower fluorescence and can give higher non-specific background than other dye colors. **Stock status:** Because Biotium offers a large number of antibody and conjugation options, primary antibody conjugates may be made to order. Typical lead times are up to one week for CF \circledR dye and biotin conjugates, and up to 2-3 weeks for fluorescent protein and enzyme conjugates. Please email order@biotium.com to inquire about stock status and lead times before placing your order. **Catalog number key for antibody number 2341, Anti-EGFR (GFR/2341)**

Product attributes

Antibody number	#2341
Antibody reactivity (target)	EGFR
Antibody type	Primary
Host species	Mouse
Clonality	Monoclonal
Clone	GFR/2341
Isotype	IgG2b, kappa
Molecular weight	~170 kDa (wild type) and ~145 kDa (vIII variant)
Synonyms	ErbB1; ERBB1; Errp; HER1; mENA; PIG61; Proto-oncogene c-ErbB-1; Receptor Tyrosine Protein Kinase; ErbB1; Urogastrone; wa2; Wa5
Human gene symbol	EGFR
Entrez gene ID	1956
SwissProt	P00533
Unigene	488293
Immunogen	Recombinant fragment of human EGFR protein (around aa 344-492) (exact sequence is proprietary)
Verified antibody applications	IHC (FFPE) (verified), WB (verified)
Antibody target cellular localization	Plasma membrane
Species reactivity	Human
Antibody application notes	Higher concentration may be required for direct detection using primary antibody conjugates than for indirect detection with secondary antibody. Immunohistochemistry (formalin): 1-2 μ g/mL for 30 minutes at RT. Staining of formalin-fixed tissues requires boiling tissue sections in 10 mM citrate buffer, pH 6.0, for 10-20 minutes followed by cooling at RT for 20 minutes. Optimal dilution for a specific application should be determined by user.
Positive control	A431 cells, Placenta, Breast, Colon or Bladder cancer
Shipping condition	Room temperature
Storage Conditions	Store at 2 to 8 $^{\circ}$ C, Protect fluorescent conjugates from light, Note: store BSA-free antibodies at -10 to -35 $^{\circ}$ C
Shelf life	Guaranteed for at least 24 months from date of receipt when stored as recommended
Regulatory status	For research use only (RUO)
Antibody/conjugate formulation	Conjugates: 0.1 mg/mL in PBS/0.1% BSA/0.05% azide, HRP conjugates: 0.1 mg/mL in PBS/0.05% BSA, Purified: 0.2 mg/mL in PBS/0.05% BSA/0.05% azide, Purified, BSA-free: 1 mg/mL in PBS without azide
Validated in protein	Monospecific
Antibody research areas	Cancer, Signal transduction
Tumor expression	Squamous cell carcinoma

Antibody # prefix	Conjugation	Ex/Em (nm)	Laser line	Detection channel
BNC04	CF \circledR 405S	404/431	405	DAPI (microscopy), AF405
BNC88	CF \circledR 488A	490/515	488	GFP, FITC
BNC68	CF \circledR 568	562/583	532, 561	RFP, TRITC
BNC94	CF \circledR 594	593/614	561	Texas Red \circledR
BNC40	CF \circledR 640R	642/662	633-640	Cy \circledR 5
BNC47	CF \circledR 647	650/665	633-640	Cy \circledR 5
BNCB	Biotin	N/A	N/A	N/A
BNUB	Purified	N/A	N/A	N/A
BNUM	Purified, BSA-free	N/A	N/A	N/A

Dye Features

[CF \$\circledR\$ 405S Features](#)
[CF \$\circledR\$ 488A Features](#)
[CF \$\circledR\$ 568 Features](#)
[CF \$\circledR\$ 594 Features](#)
[CF \$\circledR\$ 640R Features](#)
[CF \$\circledR\$ 647 Features](#)

Alexa Fluor, Pacific Blue, Pacific Orange, and Texas Red are trademarks or registered trademarks of Thermo Fisher Scientific; Cy is a registered trademark of Cytiva; IRDye, LI-COR, LI-COR Bioscience.