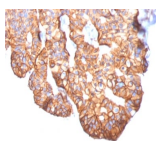


# HER-2 / CD340 Monoclonal Mouse Antibody (ERBB2/2452)



## Product Description

This antibody recognizes a protein of 185 kDa, which is identified as c-erbB-2/HER-2/neu. Its epitope is localized in the extracellular domain. C-erbB-2/HER-2 is a member of the EGFR family. This MAb is specific and shows minimal cross-reaction with other members of the EGFR-family. Receptors of this family are located on the plasma membrane and consist of an extracellular ligand-binding domain that is connected to a large intracellular domain by a single transmembrane sequence. c-erbB-2/HER-2 protein is over-expressed in a variety of carcinomas especially those of breast and ovary.

Primary antibodies are available purified, or with a selection of fluorescent CF® dyes and other labels. CF® dyes offer exceptional brightness and photostability. See the [CF® Dye Brochure](#) for more information. Note: Conjugates of blue fluorescent dyes like CF®405S and CF®405M are not recommended for detecting low abundance targets, because blue dyes have lower fluorescence and can give higher non-specific background than other dye colors.

**Stock status:** Because Biotium offers a large number of antibody and conjugation options, primary antibody conjugates may be made to order. Typical lead times are up to one week for CF® dye and biotin conjugates, and up to 2-3 weeks for fluorescent protein and enzyme conjugates. Please email [order@biotium.com](mailto:order@biotium.com) to inquire about stock status and lead times before placing your order.

**Catalog number key for antibody number 2452, Anti-HER-2 / c-ErbB-2 / Neu / CD340 (ERBB2/2452)**

Call us : [800-304-5357](tel:800-304-5357)

## Product attributes

Antibody number	#2452
Antibody reactivity (target)	c-ErbB-2, CD340, HER-2, Neu
Antibody type	Primary
Host species	Mouse
Clonality	Monoclonal
Clone	ERBB2/2452
Isotype	IgG2a, kappa
Molecular weight	185 kDa
Synonyms	p185, CD340, Verb b2 Erythroblastic Leukemia Viral Oncogene Homolog 2, Neuro/Glioblastoma Derived Oncogene Homolog
Human gene symbol	ERBB2
Entrez gene ID	2064
SwissProt	P04626
Unigene	446352
Immunogen	Recombinant human HER-2 protein fragment (around aa 311-462) (exact sequence is proprietary)
Verified antibody applications	Flow (verified), IF (verified), IHC (FFPE) (verified)
Antibody target cellular localization	Plasma membrane
Species reactivity	Human
Antibody application notes	Higher concentration may be required for direct detection using primary antibody conjugates than for indirect detection with secondary antibody. Immunohistology (formalin): 1-2 ug/mL for 30 minutes at RT. Staining of formalin-fixed tissues requires boiling tissue sections in 10 mM citrate buffer, pH 6.0, for 10-20 minutes followed by cooling at RT for 20 minutes. Optimal dilution for a specific application should be determined by user
Positive control	SKBR-3 Cells or Breast Cancers.
Shipping condition	Room temperature
Storage Conditions	Store at 2 to 8 °C. Protect fluorescent conjugates from light, Note: store BSA-free antibodies at -10 to -35 °C
Shelf life	Guaranteed for at least 24 months from date of receipt when stored as recommended
Regulatory status	For research use only (RUO)
Antibody/conjugate formulation	Conjugates: 0.1 mg/mL in PBS/0.1% BSA/0.05% azide, HRP conjugates: 0.1 mg/mL in PBS/0.05% BSA, Purified: 0.2 mg/mL in PBS/0.05% BSA/0.05% azide, Purified, BSA-free: 1 mg/mL in PBS without azide
Validated in protein array	Monospecific
Antibody research areas	Cancer, Signal transduction
Product origin	Product may contain either bovine serum albumin (BSA) from bovine serum (Bos taurus), or recombinant BSA produced in Chinese hamster ovary cells. Inquire for the specific lot.
Tumor expression	Breast cancer, Ovarian cancer

Antibody # prefix	Conjugation	Ex/Em (nm)	Laser line	Detection channel	Dye Features
BNC04	CF®405S	404/431	405	DAPI (microscopy), AF405	<a href="#">CF®405S Features</a>
BNC88	CF®488A	490/515	488	GFP, FITC	<a href="#">CF®488A Features</a>
BNC68	CF®568	562/583	532, 561	RFP, TRITC	<a href="#">CF®568 Features</a>
BNC94	CF®594	593/614	561	Texas Red®	<a href="#">CF®594 Features</a>
BNC40	CF®640R	642/662	633-640	Cy®5	<a href="#">CF®640R Features</a>
BNC47	CF®647	650/665	633-640	Cy®5	<a href="#">CF®647 Features</a>
BNC74	CF®740	742/767	633-685	775/50	<a href="#">CF®740 Features</a>
BNCB	Biotin	N/A	N/A	N/A	
BNUB	Purified	N/A	N/A	N/A	
BNUM	Purified, BSA-free	N/A	N/A	N/A	

Alexa Fluor, Pacific Blue, Pacific Orange, and Texas Red are trademarks or registered trademarks of Thermo Fisher Scientific; Cy is a registered trademark of Cytiva; IRDye, LI-COR, and Odyssey are registered trademarks of LI-COR Bioscience.

This datasheet was generated on January 27, 2026 at 11:39:18 PM. Visit product page to check for updated information before use.  
Product link: <https://biotium.com/product/her-2-c-erbb-2-neu-cd340-monoclonal-mouse-antibody-erbb2-2452/>