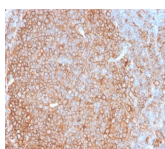


HLA-Pan Recombinant Monoclonal Rabbit Antibody (HLA-Pan/2967R)



Product Description

This antibody reacts with a common epitope of human major histocompatibility (MHC) class II antigens, HLA-DP, -DQ and -DR. Human MHC class II antigens are transmembrane glycoproteins composed of an alpha chain (36 kDa) and a beta chain (27 kDa). They are expressed primarily on antigen presenting cells such as B lymphocytes, monocytes, macrophages, and thymic epithelial cells and are also present on activated T lymphocytes. Human MHC class II genes are located in the HLA-D region that encodes at least six alpha and ten beta chain genes. Three loci, DR, DQ and DP, encode the major expressed products of the human class II region. The human MHC class II molecules bind intracellularly processed peptides and present them to T-helper cells. They, therefore, have a critical role in the initiation of the immune response. It has been shown that some autoimmune diseases are associated with certain class II alleles.

Primary antibodies are available purified, or with a selection of fluorescent CF® Dyes and other labels. CF® Dyes offer exceptional brightness and photostability. See the [CF® Dye Brochure](#) for more information. Note: Conjugates of blue fluorescent dyes like CF®405S and CF®405M are not recommended for detecting low abundance targets, because blue dyes have lower fluorescence and can give higher non-specific background than other dye colors.

Stock status: Because Biotium offers a large number of antibody and conjugation options, primary antibody conjugates may be made to order. Typical lead times are up to one week for CF® Dye and biotin conjugates, and up to 2-3 weeks for fluorescent protein and enzyme conjugates. Please email order@biotium.com to inquire about stock status and lead times before placing your order.

Catalog number key for antibody number 2967, Anti-HLA-DP/-DQ/-DR (HLA-Pan/2967R)

Product attributes

Antibody number	#2967
Antibody reactivity (target)	HLA-DP/-DQ/-DR
Antibody type	Primary
Host species	Rabbit
Clonality	Recombinant Monoclonal
Clone	HLA-Pan/2967R
Isotype	IgG
Molecular weight	33-35 kDa
Synonyms	HLA-DPB1; HLA-DQA1; HLA-DQB1; HLA-DRA; HLA-DRB1; HLA-DRB3; HLA-DRB4; HLA-DRB5
Human gene symbol	HLA-DP; HLA-DQ; HLA-DR
Entrez gene ID	3115 (HLA-DP); 3117 (HLA-DQ); 3122 (HLA-DR)
SwissProt	P04440 (HLA-DP); P01908; P01909; P01920 (HLA-DQ); P01903 (HLA-DR)
Unigene	347270 (HLA-DP); 550475 (HLA-DQ); 520048 (HLA-DR)
Immunogen	Non-T, non-B human acute lymphoblastic leukemia REH6 cell line
Antibody target cellular localization	Plasma membrane
Verified antibody applications	Flow (verified), IF (verified), IHC (FFPE) (verified), WB (verified)
Species reactivity	Human
Antibody application notes	Higher concentration may be required for direct detection using primary antibody conjugates than for indirect detection with secondary antibody, ELISA: For coating use Ab at 1-5 ug/mL order Ab without BSA, Immunohistology (formalin): 0.5-1 ug/mL for 30 minutes at RT, Staining of formalin-fixed tissues requires boiling tissue sections in 10 mM citrate buffer, pH 6.0, for 10-20 minutes followed by cooling at RT for 20 minutes
Positive control	Raji cells. Tonsil or lymph node
Shipping condition	Room temperature
Storage Conditions	Store at 2 to 8 °C, Protect fluorescent conjugates from light, Note: store BSA-free antibodies at -10 to -35 °C
Shelf life	Guaranteed for at least 24 months from date of receipt when stored as recommended
Regulatory status	For research use only (RUO)
Antibody/conjugate formulation	Conjugates: 0.1 mg/mL in PBS/0.1% BSA/0.05% azide, HRP conjugates: 0.1 mg/mL in PBS/0.05% BSA, Purified: 0.2 mg/mL in PBS/0.05% BSA/0.05% azide, Purified, BSA-free: 1 mg/mL in PBS without azide
Antibody research areas	Cancer, Immunology, MHC antigens
Product origin	Product may contain either bovine serum albumin (BSA) from bovine serum (Bos taurus), or recombinant BSA produced in Chinese hamster ovary cells. Inquire for the specific lot.

Antibody # prefix	Conjugation	Ex/Em (nm)	Laser line	Detection channel	Dye Features
BNC04	CF®405S	404/431	405	DAPI (microscopy), AF405	CF®405S Features
BNC88	CF®488A	490/515	488	GFP, FITC	CF®488A Features
BNC68	CF®568	562/583	532, 561	RFP, TRITC	CF®568 Features
BNC94	CF®594	593/614	561	Texas Red®	CF®594 Features
BNC40	CF®640R	642/662	633-640	Cy®5	CF®640R Features
BNC47	CF®647	650/665	633-640	Cy®5	CF®647 Features
BNC74	CF®740	742/767	633-685	775/50	CF®740 Features
BNCB	Biotin	N/A	N/A	N/A	
BNUB	Purified	N/A	N/A	N/A	
BNUM	Purified, BSA-free	N/A	N/A	N/A	

Alexa Fluor, Pacific Blue, Pacific Orange, and Texas Red are trademarks or registered trademarks of Thermo Fisher Scientific; Cy is a registered trademark of Cytiva; IRDye, LI-COR, and Odyssey are registered trademarks of LI-COR Bioscience.

This datasheet was generated on August 28, 2025 at 04:43:24 AM. Visit product page to check for updated information before use.
Product link: <https://biotium.com/product/hla-pan-recombinant-monoclonal-rabbit-antibody-hla-pan-2967r/>