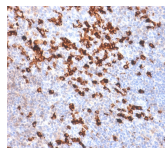


Human Kappa Light Chain Recombinant Monoclonal Rabbit Antibody (IGKC/1999R)



Product Description

This MAb is specific to kappa light chain of immunoglobulin and shows no cross-reaction with lambda light chain or any of the five heavy chains. In mammals, the two light chains in an antibody are always identical, with only one type of light chain, kappa or lambda. The ratio of Kappa to Lambda is 70:30. However, with the occurrence of multiple myeloma or other B-cell malignancies this ratio is disturbed. Antibody to the kappa light chain is reportedly useful in the identification of leukemias, plasmacytomas, and certain non-Hodgkin's lymphomas. Demonstration of clonality in lymphoid infiltrates indicates that the infiltrate is malignant. Primary antibodies are available purified, or with a selection of fluorescent CF® dyes and other labels. CF® dyes offer exceptional brightness and photostability. See the [CF® Dye Brochure](#) for more information. Note: Conjugates of blue fluorescent dyes like CF®405S and CF®405M are not recommended for detecting low abundance targets, because blue dyes have lower fluorescence and can give higher non-specific background than other dye colors. **Stock status:** Because Biotium offers a large number of antibody and conjugation options, primary antibody conjugates may be made to order. Typical lead times are up to one week for CF® dye and biotin conjugates, and up to 2-3 weeks for fluorescent protein and enzyme conjugates. Please email order@biotium.com to inquire about stock status and lead times before placing your order. **Catalog number key for antibody number 1999, Anti-Kappa Light Chain (IGKC/1999R)**

Product attributes

Antibody number	#1999
Antibody reactivity (target)	Kappa Light Chain
Antibody type	Primary
Host species	Rabbit
Clonality	Recombinant Monoclonal
Clone	IGKC/1999R
Isotype	IgG
Molecular weight	25 kDa
Synonyms	HCAK1; Ig Kappa Chain C Region; IGKC; Immunoglobulin KM
Human gene symbol	IGKC
Entrez gene ID	3514
SwissProt	P01601 & P01834
Unigene	449609
Immunogen	Recombinant full-length human Ig kappa light chain (IGKC) protein
Antibody target cellular localization	Plasma membrane, Secreted (extracellular)
Verified antibody applications	IHC (FFPE) (verified)
Species reactivity	Human
Positive control	293T, Raji or hPBL cells. Tonsil or Spleen
Shipping condition	Room temperature
Storage Conditions	Store at 2 to 8 °C, Protect fluorescent conjugates from light, Note: store BSA-free antibodies at -10 to -35 °C
Shelf life	Guaranteed for at least 24 months from date of receipt when stored as recommended
Regulatory status	For research use only (RUO)
Antibody/conjugate formulation	Conjugates: 0.1 mg/mL in PBS/0.1% BSA/0.05% azide, HRP conjugates: 0.1 mg/mL in PBS/0.05% BSA, Purified: 0.2 mg/mL in PBS/0.05% BSA/0.05% azide, Purified, BSA-free: 1 mg/mL in PBS without azide
Validated in protein array	Monospecific
Antibody research areas	Cancer, Immunology, Inflammation
Cell/tissue expression	B-cells
Tumor expression	Leukemia/lymphoma

Antibody # prefix	Conjugation	Ex/Em (nm)	Laser line	Detection channel
BNC04	CF®405S	404/431	405	DAPI (microscopy), AF405
BNC88	CF®488A	490/515	488	GFP, FITC
BNC68	CF®568	562/583	532, 561	RFP, TRITC
BNC94	CF®594	593/614	561	Texas Red®
BNC40	CF®640R	642/662	633-640	Cy®5
BNC47	CF®647	650/665	633-640	Cy®5
BNCB	Biotin	N/A	N/A	N/A
BNUB	Purified	N/A	N/A	N/A
BNUM	Purified, BSA-free	N/A	N/A	N/A

Dye Features

[CF®405S Features](#)
[CF®488A Features](#)
[CF®568 Features](#)
[CF®594 Features](#)
[CF®640R Features](#)
[CF®647 Features](#)

Alexa Fluor, Pacific Blue, Pacific Orange, and Texas Red are trademarks or registered trademarks of Thermo Fisher Scientific; Cy is a registered trademark of Cytiva; IRDye, LI-COR, and LI-COR Bioscience.