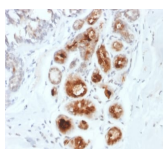


# Mammaglobin Monoclonal Mouse Antibody (MGB1/2000)



## Product Description

Mammaglobin is a 93 amino acid glycoprotein with homology to other secretoglobins-uteroglobins family members. It was originally identified as a breast cancer restricted biomarker by differential screening. Mammaglobin related to secretoglobins family that includes human uteroglobins and lipophilins. Mammaglobin antibody stains cytoplasm of normal breast epithelial cells as well as primary and metastatic breast carcinomas. Mammaglobin expression is absent in prostate, kidney, colon, rectum, small intestine, stomach, pancreas, lung, and thyroid tissues. Mammaglobin may be used as part of an immunohistochemical panel for determination of metastatic breast carcinoma and tumor of unknown primary origin.

Primary antibodies are available purified, or with a selection of fluorescent CF® dyes and other labels. CF® dyes offer exceptional brightness and photostability. See the [CF® Dye Brochure](#) for more information. Note: Conjugates of blue fluorescent dyes like CF®405S and CF®405M are not recommended for detecting low abundance targets, because blue dyes have lower fluorescence and can give higher non-specific background than other dye colors.

**Stock status:** Because Biotium offers a large number of antibody and conjugation options, primary antibody conjugates may be made to order. Typical lead times are up to one week for CF® dye and biotin conjugates, and up to 2-3 weeks for fluorescent protein and enzyme conjugates. Please email [order@biotium.com](mailto:order@biotium.com) to inquire about stock status and lead times before placing your order.

**Catalog number key for antibody number 2000, Anti-Mammaglobin (MGB1/2000)**

Call us : [800-304-5357](tel:800-304-5357) Email: [techsupport@biotium.com](mailto:techsupport@biotium.com)

## Product attributes

Antibody number	#2000
Antibody reactivity (target)	Mammaglobin
Antibody type	Primary
Host species	Mouse
Clonality	Monoclonal
Clone	MGB1/2000
Isotype	IgG1, kappa
Molecular weight	18 kDa
Synonyms	Mammaglobin-1 (MGB1); Mammaglobin-A; Secretoglobins family 2A member 2 (SCGB2A2); SG2A2; UGB2
Human gene symbol	SCGB2A2
Entrez gene ID	4250
SwissProt	Q13296
Unigene	46452
Immunogen	Recombinant full-length human Mammaglobin (SCGB2A2) protein
Verified antibody applications	IHC (FFPE) (verified), WB (verified)
Antibody target cellular localization	Secreted (extracellular)
Species reactivity	Human
Antibody application notes	Higher concentration may be required for direct detection using primary antibody conjugates than for indirect detection with secondary antibody. Immunohistochemistry (formalin): 0.1-0.2 ug/mL for 30 minutes at RT. Staining of formalin-fixed tissues requires boiling tissue sections in 10 mM citrate buffer, pH 6.0, for 10-20 minutes followed by cooling at RT for 20 minutes. Optimal dilution for a specific application should be determined by user
Positive control	SK-BR-3 cells or Breast Carcinoma
Shipping condition	Room temperature
Storage Conditions	Store at 2 to 8 °C. Protect fluorescent conjugates from light. Note: store BSA-free antibodies at -10 to -35 °C
Shelf life	Guaranteed for at least 24 months from date of receipt when stored as recommended
Regulatory status	For research use only (RUO)
Antibody/conjugate formulation	Conjugates: 0.1 mg/mL in PBS/0.1% BSA/0.05% azide, HRP conjugates: 0.1 mg/mL in PBS/0.05% BSA, Purified: 0.2 mg/mL in PBS/0.05% BSA/0.05% azide, Purified, BSA-free: 1 mg/mL in PBS without azide
Validated in protein array	Monospecific
Antibody research areas	Cancer
Product origin	Product may contain either bovine serum albumin (BSA) from bovine serum (Bos taurus), or recombinant BSA produced in Chinese hamster ovary cells. Inquire for the specific lot.
Cell/tissue expression	Mammary gland
Tumor expression	Breast cancer

Antibody # prefix	Conjugation	Ex/Em (nm)	Laser line	Detection channel	Dye Features
BNC04	CF®405S	404/431	405	DAPI (microscopy), AF405	<a href="#">CF®405S Features</a>
BNC88	CF®488A	490/515	488	GFP, FITC	<a href="#">CF®488A Features</a>
BNC68	CF®568	562/583	532, 561	RFP, TRITC	<a href="#">CF®568 Features</a>
BNC94	CF®594	593/614	561	Texas Red®	<a href="#">CF®594 Features</a>
BNC40	CF®640R	642/662	633-640	Cy®5	<a href="#">CF®640R Features</a>
BNC47	CF®647	650/665	633-640	Cy®5	<a href="#">CF®647 Features</a>
BNC74	CF®740	742/767	633-685	775/50	<a href="#">CF®740 Features</a>
BNCB	Biotin	N/A	N/A	N/A	
BNUB	Purified	N/A	N/A	N/A	
BNUM	Purified, BSA-free	N/A	N/A	N/A	

Alexa Fluor, Pacific Blue, Pacific Orange, and Texas Red are trademarks or registered trademarks of Thermo Fisher Scientific; Cy is a registered trademark of Cytiva; IRDye, LI-COR, and Odyssey are registered trademarks of LI-COR Bioscience.

This datasheet was generated on August 24, 2025 at 09:36:07 PM. Visit product page to check for updated information before use.  
Product link: <https://biotium.com/product/mammaglobin-monoclonal-mouse-antibody-mgb1-2000/>