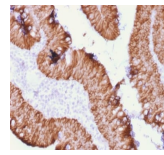




Glowing products for science

Call us : [800-304-5357](tel:800-304-5357) Email: btinfo@biotium.com

Ep-CAM / CD326 Recombinant Monoclonal Mouse Antibody (rEGP40/1372)



EGP40 (Ep-CAM) is an epithelial cellular adhesion molecule expressed on baso-lateral cell surface in most simple epithelia and a vast majority of carcinomas.

Product Description

EGP40 is a 40-43 kDa transmembrane epithelial glycoprotein, also identified as epithelial specific antigen (ESA), or epithelial cellular adhesion molecule (Ep-CAM). It is expressed on baso-lateral cell surface in most simple epithelia and a vast majority of carcinomas. This antibody has been used to distinguish adenocarcinoma from pleural mesothelioma and hepatocellular carcinoma. This antibody is also useful in distinguishing serous carcinomas of the ovary from mesothelioma. Primary antibodies are available purified, or with a selection of fluorescent CF® dyes and other labels. CF® dyes offer exceptional brightness and photostability. See the [CF® Dye Brochure](#) for more information. Note: Conjugates of blue fluorescent dyes like CF®405S and CF®405M are not recommended for detecting low abundance targets, because blue dyes have lower fluorescence and can give higher non-specific background than other dye colors. **Stock status:** Because Biotium offers a large number of antibody and conjugation options, primary antibody conjugates may be made to order. Typical lead times are up to one week for CF® dye and biotin conjugates, and up to 2-3 weeks for fluorescent protein and enzyme conjugates. Please email order@biotium.com to inquire about stock status and lead times before placing your order. **Catalog number key for antibody number 2172, Anti-Ep-CAM / CD326 (rEGP40/1372)**

Antibody #	prefix Conjugation	Ex/Em	Concentration	Storage Buffer
BNC04	CF®405S	404/431 nm	0.1 mg/mL	PBS, 0.1% BSA, 0.05% azide
BNC05	CF®405M	408/452 nm	0.1 mg/mL	PBS, 0.1% BSA, 0.05% azide
BNC06	CF®405L	395/545 nm	0.1 mg/mL	PBS, 0.1% BSA, 0.05% azide
BNC88	CF®488A	490/515 nm	0.1 mg/mL	PBS, 0.1% BSA, 0.05% azide
BNC14	CF®514	516/548 nm	0.1 mg/mL	PBS, 0.1% BSA, 0.05% azide
BNC43	CF®543	541/560 nm	0.1 mg/mL	PBS, 0.1% BSA, 0.05% azide
BNC55	CF®555	555/565 nm	0.1 mg/mL	PBS, 0.1% BSA, 0.05% azide
BNC68	CF®568	562/583 nm	0.1 mg/mL	PBS, 0.1% BSA, 0.05% azide
BNC94	CF®594	593/614 nm	0.1 mg/mL	PBS, 0.1% BSA, 0.05% azide
BNC40	CF®640R	642/662 nm	0.1 mg/mL	PBS, 0.1% BSA, 0.05% azide
BNC47	CF®647	650/665 nm	0.1 mg/mL	PBS, 0.1% BSA, 0.05% azide
BNC60	CF®660C	667/685 nm	0.1 mg/mL	PBS, 0.1% BSA, 0.05% azide
BNC61	CF®660R	663/682 nm	0.1 mg/mL	PBS, 0.1% BSA, 0.05% azide
BNC80	CF®680	681/698 nm	0.1 mg/mL	PBS, 0.1% BSA, 0.05% azide
BNC81	CF®680R	680/701 nm	0.1 mg/mL	PBS, 0.1% BSA, 0.05% azide
BNC00	CF®700	695/720 nm	0.1 mg/mL	PBS, 0.1% BSA, 0.05% azide
BNC70	CF®770	770/797 nm	0.1 mg/mL	PBS, 0.1% BSA, 0.05% azide
BNCR	R-PE (PE)	496, 546, 565/578 nm	0.1 mg/mL	PBS, 0.1% BSA, 0.05% azide
BNCA	APC	650/660 nm	0.1 mg/mL	PBS, 0.1% BSA, 0.05% azide
BNCP	PerCP	482/677 nm	0.1 mg/mL	PBS, 0.1% BSA, 0.05% azide
BNCB	Biotin	N/A	0.1 mg/mL	PBS, 0.1% BSA, 0.05% azide
BNCAP	Alkaline Phosphatase	N/A	0.1 mg/mL	PBS, 0.1% BSA, 0.05% azide
BNCH	Horseradish Peroxidase	N/A	0.1 mg/mL	PBS, 0.05% BSA, no azide
BNUB	Purified, with BSA	N/A	0.2 mg/mL	PBS, 0.05% BSA, 0.05% azide
BNUM	Purified, BSA-free	N/A	1 mg/mL	PBS, no BSA, no azide

References

Litvinov SV et. al. J Cell Biol, 1994, 125:437-46. | Tsubura A et. al. J Cut Pathol, 1992, 19:73-9.

Product attributes

Supplied As	Conjugates: 0.1 mg/mL in PBS/0.1% BSA/0.05% azide, HRP conjugates: 0.1 mg/mL in PBS/0.05% BSA, Purified, BSA-free: 1 mg/mL in PBS without azide, Purified: 0.2 mg/mL in PBS/0.05% BSA/0.05% azide
Tumor expression	Adenocarcinoma
Antibody number	2172
Reactivity (target)	CD326, Ep-CAM
Antibody type	Primary
Host species	Mouse
Clonality	Recombinant Monoclonal
Clone	rEGP40/1372
Isotype	IgG1
Molecular weight	40-43 kDa
Synonyms	Adenocarcinoma-associated Antigen; Cell Surface Glycoprotein Trop-1; EGP2; EGP314; EGP40; Epithelial Cell Adhesion Molecule; Epithelial Glycoprotein 314; ESA; KSA; TACD1; TROP1; Tumor-associated Calcium Signal Transducer 1 (TACSTD1); ECS-1; Epidermal Surface Antigen 1; ESA1; FLOT2; Flotillin-2; Membrane Component, Chromosome 17, Surface Marker-1 (M17S1); REG-1; Reggie-1; Reggie-2
Human gene symbol	TACSTD1
Entrez gene ID	4072
SwissProt	P16422
Unigene	542050
Immunogen	Recombinant human EpCAM protein fragment from extracellular domain (around aa77-202) (exact sequence is proprietary)
Cellular localization	Membrane/cell surface
Species reactivity	Human
Applications	Immunohistology (formalin), Western
Application notes	Immunohistology (formalin): 0.5-1 ug/mL for 30 minutes at RT. Staining of formalin-fixed tissues requires boiling tissue sections in 10 mM citrate buffer, pH 6.0, for 10-20 minutes followed by cooling at RT for 20 minutes. Western blotting 0.5-1 ug/mL. Optimal dilution for a specific application should be determined by user
Positive control	HT29 cells or Ovarian carcinoma
Shipping condition	Room temperature
Storage Conditions	Store at 2 to 8 °C, Protect fluorescent conjugates from light, Note: store BSA-free antibodies at -10 to -35 °C
Shelf life	Guaranteed for at least 24 months from date of receipt when stored as recommended
Regulatory status	For research use only (RUO)
Research areas	Cancer, Cell adhesion
Cell/tissue expression	Epithelial cells

This datasheet was generated on January 26, 2021 at 04:57:03 PM. Visit product page to check for updated information before use.

Product link: <https://biotium.com/product/ep-cam-cd326-recombinant-monoclonal-mouse-antibody-regp40-1372/>