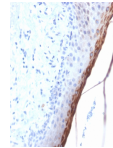


Filaggrin Recombinant Monoclonal Rabbit Antibody (FLG/1957R)



Product Description

Filaggrin is an intermediate filament-associated protein that aggregates keratin intermediate filaments in mammalian epidermis. It is initially synthesized as a polyprotein precursor, profilaggrin (consisting of multiple filaggrin units of 324 aa each), which is localized in keratohyalin granules, and is subsequently proteolytically processed into individual functional filaggrin molecules. Active filaggrin is present at a level of the epidermis where keratinocytes are in transition between the live nucleated granular layer and the anucleate cornified layer, suggesting that filaggrin aids in the terminal differentiation process by facilitating apoptotic machinery. Primary antibodies are available purified, or with a selection of fluorescent CF® dyes and other labels. CF® dyes offer exceptional brightness and photostability. See the [CF® Dye Brochure](#) for more information. Note: Conjugates of blue fluorescent dyes like CF®405S and CF®405M are not recommended for detecting low abundance targets, because blue dyes have lower fluorescence and can give higher non-specific background than other dye colors.

Stock status: Because Biotium offers a large number of antibody and conjugation options, primary antibody conjugates may be made to order. Typical lead times are up to one week for CF® dye and biotin conjugates, and up to 2-3 weeks for fluorescent protein and enzyme conjugates. Please email order@biotium.com to inquire about stock status and lead times before placing your order. **Catalog number key for antibody number 1957, Anti-Filaggrin (FLG/1957R)**

Product attributes

Antibody number	#1957
Antibody reactivity (target)	Filaggrin
Antibody type	Primary
Host species	Rabbit
Clonality	Recombinant Monoclonal
Clone	FLG/1957R
Isotype	IgG
Molecular weight	26-45 kDa (Processed); 350 kDa (Profilaggrin)
Synonyms	ATOD2; Epidermal Filaggrin; Filaggrin; Filaggrin precursor; Filagrin; FLG; Profilaggrin
Human gene symbol	FLG
Entrez gene ID	2312
SwissProt	P20930
Unigene	654510
Immunogen	Recombinant human Filaggrin protein fragment (around aa 198-288) (exact sequence is proprietary)
Antibody target cellular localization	Cytoskeleton
Verified antibody applications	IHC (FFPE) (verified)
Species reactivity	Human
Positive control	U-251-MG cells. Skin.
Shipping condition	Room temperature
Storage Conditions	Store at 2 to 8 °C, Protect fluorescent conjugates from light, Note: store BSA-free antibodies at -10 to -35 °C
Shelf life	Guaranteed for at least 24 months from date of receipt when stored as recommended
Regulatory status	For research use only (RUO)
Antibody/conjugate formulation	Conjugates: 0.1 mg/mL in PBS/0.1% BSA/0.05% azide, HRP conjugates: 0.1 mg/mL in PBS/0.05% BSA, Purified: 0.2 mg/mL in PBS/0.05% BSA/0.05% azide, Purified, BSA-free: 1 mg/mL in PBS without azide
Antibody research areas	Cell adhesion

Antibody # prefix	Conjugation	Ex/Em (nm)	Laser line	Detection channel	Dye Features
BNC04	CF@405S	404/431	405	DAPI (microscopy), AF405	CF@405S Features
BNC88	CF@488A	490/515	488	GFP, FITC	CF@488A Features
BNC68	CF@568	562/583	532, 561	RFP, TRITC	CF@568 Features
BNC94	CF@594	593/614	561	Texas Red®	CF@594 Features
BNC40	CF@640R	642/662	633-640	Cy@5	CF@640R Features
BNC47	CF@647	650/665	633-640	Cy@5	CF@647 Features
BNCB	Biotin	N/A	N/A	N/A	
BNUB	Purified	N/A	N/A	N/A	
BNUM	Purified, BSA-free	N/A	N/A	N/A	

Alexa Fluor, Pacific Blue, Pacific Orange, and Texas Red are trademarks or registered trademarks of Thermo Fisher Scientific; Cy is a registered trademark of Cytiva; IRDye, LI-COR, LI-COR Bioscience.

This datasheet was generated on July 23, 2024 at 04:25:58 PM. Visit product page to check for updated information before use.

Product link: <https://biotium.com/product/filaggrin-recombinant-monoclonal-rabbit-antibody-flg-1957r/>