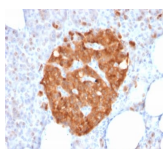


GPN1 / XAB1 Monoclonal Mouse Antibody (GPN1/2350)



Product Description

GPN1 is involved in protein synthesis events. It is expressed ubiquitously with highest expression in testis. It binds to the RNA polymerase II- (Poll II) associated proteins RPAP1-3 and to XPA (a protein involved in DNA repair mechanisms), thereby forming an interface with Poll II. Via this interaction, GPN1 is thought to mediate the involvement of Pol II in both protein complex formation and protein chaperone/ scaffolding activities. In addition, GPN1 interacts with components of the integrator and molecular chaperone complexes, further implicating GPN1 in protein assembly. GPN1 contains a cluster of acidic amino acids in its C-terminal region and a series of sequences similar to those found in GTP-binding proteins in its N-terminal region, suggesting that GPN1 has possible GTPase activity.

Primary antibodies are available purified, or with a selection of fluorescent CF® dyes and other labels. CF® dyes offer exceptional brightness and photostability. See the [CF® Dye Brochure](#) for more information. Note: Conjugates of blue fluorescent dyes like CF®405S and CF®405M are not recommended for detecting low abundance targets, because blue dyes have lower fluorescence and can give higher non-specific background than other dye colors.

Stock status: Because Biotium offers a large number of antibody and conjugation options, primary antibody conjugates may be made to order. Typical lead times are up to one week for CF® dye and biotin conjugates, and up to 2-3 weeks for fluorescent protein and enzyme conjugates. Please email order@biotium.com to inquire about stock status and lead times before placing your order.

Catalog number key for antibody number 2350, Anti-GPN1 / XAB1 (GPN1/2350)

Call us : [800-304-5357](tel:800-304-5357)

Product attributes

Antibody number	#2350
Antibody reactivity (target)	GPN1, XAB1
Antibody type	Primary
Host species	Mouse
Clonality	Monoclonal
Clone	GPN1/2350
Isotype	IgG1, kappa
Molecular weight	42 kDa
Synonyms	ATP(GTP) binding protein (ATPBD1A); GPN-loop GTPase 1; GPN1; MBD2-interacting protein (MBDin); NTPBP; RNA polymerase II associated protein 4 (RPAP4); XPA-binding protein 1 (XAB1) GTPase
Human gene symbol	GPN1
Entrez gene ID	11321
SwissProt	Q9HCN4
Unigene	18259
Immunogen	Recombinant full-length human GPN1 protein
Verified antibody applications	WB (verified)
Antibody target cellular localization	Nucleus & cytoplasm
Species reactivity	Human
Antibody application notes	Higher concentration may be required for direct detection using primary antibody conjugates than for indirect detection with secondary antibody, ELISA: For coating order antibody without BSA, Immunohistology (formalin): 1-2 ug/mL for 30 minutes at RT, Staining of formalin-fixed tissues requires boiling tissue sections in 10 mM citrate buffer, pH 6.0, for 10-20 minutes followed by cooling at RT for 20 minutes, Optimal dilution for a specific application should be determined by user
Positive control	Pancreas, Testis, Thyroid or Bladder.
Shipping condition	Room temperature
Storage Conditions	Store at 2 to 8 °C, Protect fluorescent conjugates from light, Note: store BSA-free antibodies at -10 to -35 °C
Shelf life	Guaranteed for at least 24 months from date of receipt when stored as recommended
Regulatory status	For research use only (RUO)
Antibody/conjugate formulation	Conjugates: 0.1 mg/mL in PBS/0.1% BSA/0.05% azide, HRP conjugates: 0.1 mg/mL in PBS/0.05% BSA, Purified: 0.2 mg/mL in PBS/0.05% BSA/0.05% azide, Purified, BSA-free: 1 mg/mL in PBS without azide
Validated in protein array	Monospecific
Antibody research areas	Metabolism
Product origin	Product may contain either bovine serum albumin (BSA) from bovine serum (Bos taurus), or recombinant BSA produced in Chinese hamster ovary cells. Inquire for the specific lot.

Antibody # prefix	Conjugation	Ex/Em (nm)	Laser line	Detection channel	Dye Features
BNC04	CF®405S	404/431	405	DAPI (microscopy), AF405	CF®405S Features
BNC88	CF®488A	490/515	488	GFP, FITC	CF®488A Features
BNC68	CF®568	562/583	532, 561	RFP, TRITC	CF®568 Features
BNC94	CF®594	593/614	561	Texas Red®	CF®594 Features
BNC40	CF®640R	642/662	633-640	Cy®5	CF®640R Features
BNC47	CF®647	650/665	633-640	Cy®5	CF®647 Features
BNC74	CF®740	742/767	633-685	775/50	CF®740 Features
BNCB	Biotin	N/A	N/A	N/A	
BNUB	Purified	N/A	N/A	N/A	
BNUM	Purified, BSA-free	N/A	N/A	N/A	

Alexa Fluor, Pacific Blue, Pacific Orange, and Texas Red are trademarks or registered trademarks of Thermo Fisher Scientific; Cy is a registered trademark of Cytiva; IRDye, LI-COR, and Odyssey are registered trademarks of LI-COR Bioscience.

This datasheet was generated on February 1, 2026 at 12:22:10 AM. Visit product page to check for updated information before use.

Product link: <https://biotium.com/product/gpn1-xab1-monoclonal-mouse-antibody-gpn1-2350/>