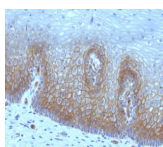


# Thrombomodulin / CD141 Recombinant Monoclonal Mouse Antibody (rTHBD/1591)



## Product Description

This antibody recognizes a protein of 75 kDa, identified as Thrombomodulin. Thrombomodulin is a transmembrane glycoprotein with natural anticoagulant properties. It is normally expressed by a restricted number of cells, such as endothelial and mesothelial cells. In addition, synovial lining and syncytio-trophoblasts of placenta also express thrombomodulin. This protein is present in almost all of benign vascular tumors and majority of malignant vascular tumors (Kaposi's sarcoma, angiosarcoma, and epithelioid hemangioendothelioma). Hence, anti-thrombomodulin serves as a sensitive marker for lymphatic endothelial cells and their tumors. Recently, thrombomodulin antibody has been used for mesothelial cells and malignant mesotheliomas.

Primary antibodies are available purified, or with a selection of fluorescent CF® dyes and other labels. CF® dyes offer exceptional brightness and photostability. See the [CF® Dye Brochure](#) for more information. Note: Conjugates of blue fluorescent dyes like CF®405S and CF®405M are not recommended for detecting low abundance targets, because blue dyes have lower fluorescence and can give higher non-specific background than other dye colors.

**Stock status:** Because Biotium offers a large number of antibody and conjugation options, primary antibody conjugates may be made to order. Typical lead times are up to one week for CF® dye and biotin conjugates, and up to 2-3 weeks for fluorescent protein and enzyme conjugates. Please email [order@biotium.com](mailto:order@biotium.com) to inquire about stock status and lead times before placing your order.

**Catalog number key for antibody number 2332, Anti-Thrombomodulin / CD141 (rTHBD/1591)**

## Product attributes

<b>Antibody number</b>	#2332
<b>Antibody reactivity (target)</b>	CD141, Thrombomodulin
<b>Antibody type</b>	Primary
<b>Host species</b>	Mouse
<b>Clonality</b>	Recombinant Monoclonal
<b>Clone</b>	rTHBD/1591
<b>Isotype</b>	IgG1
<b>Molecular weight</b>	100 kDa
<b>Synonyms</b>	AHUS6; BDCA3; CD141; Fetomodulin; Thbd; THPH12; THRM; Thrombomodulin (TM)
<b>Human gene symbol</b>	THBD
<b>Entrez gene ID</b>	7056
<b>SwissProt</b>	P07204
<b>Unigene</b>	2030
<b>Immunogen</b>	Recombinant fragment (around aa 69-194) of human Thrombomodulin (CD141) protein (exact sequence is proprietary)
<b>Verified antibody applications</b>	IHC (FFPE) (verified)
<b>Antibody target cellular localization</b>	Plasma membrane
<b>Species reactivity</b>	Human
<b>Antibody application notes</b>	Higher concentration may be required for direct detection using primary antibody conjugates than for indirect detection with secondary antibody, ELISA: 2-4 ug/m for coating order Ab without BSA, Immunohistology (formalin): 1-2 ug/mL for 30 minutes at RT, Staining of formalin-fixed tissues is enhanced by boiling tissue sections in 10 mM Tris buffer with 1 mM EDTA pH 9.0 for 10-20 minutes followed by cooling at RT for 20 minutes. Optimal dilution for a specific application should be determined by user
<b>Positive control</b>	THP1 Cells, Placenta, Angiosarcoma, Bladder or Cervical Carcinoma
<b>Shipping condition</b>	Room temperature
<b>Storage Conditions</b>	Store at 2 to 8 °C, Protect fluorescent conjugates from light, Note: store BSA-free antibodies at -10 to -35 °C
<b>Shelf life</b>	Guaranteed for at least 24 months from date of receipt when stored as recommended
<b>Regulatory status</b>	For research use only (RUO)
<b>Antibody/conjugate formulation</b>	Conjugates: 0.1 mg/mL in PBS/0.1% BSA/0.05% azide, HRP conjugates: 0.1 mg/mL in PBS/0.05% BSA, Purified: 0.2 mg/mL in PBS/0.05% BSA/0.05% azide, Purified, BSA-free: 1 mg/mL in PBS without azide
<b>Validated in protein array</b>	Monospecific
<b>Antibody research areas</b>	Cancer
<b>Product origin</b>	Product may contain either bovine serum albumin (BSA) from bovine serum (Bos taurus), or recombinant BSA produced in Chinese hamster ovary cells. Inquire for the specific lot.
<b>Cell/tissue expression</b>	Endothelial cells

Antibody # prefix	Conjugation	Ex/Em (nm)	Laser line	Detection channel	Dye Features
BNC04	CF®405S	404/431	405	DAPI (microscopy), AF405	<a href="#">CF®405S Features</a>
BNC88	CF®488A	490/515	488	GFP, FITC	<a href="#">CF®488A Features</a>
BNC68	CF®568	562/583	532, 561	RFP, TRITC	<a href="#">CF®568 Features</a>
BNC94	CF®594	593/614	561	Texas Red®	<a href="#">CF®594 Features</a>
BNC40	CF®640R	642/662	633-640	Cy®5	<a href="#">CF®640R Features</a>
BNC47	CF®647	650/665	633-640	Cy®5	<a href="#">CF®647 Features</a>
BNC74	CF®740	742/767	633-685	775/50	<a href="#">CF®740 Features</a>
BNCB	Biotin	N/A	N/A	N/A	
BNUB	Purified	N/A	N/A	N/A	
BNUM	Purified, BSA-free	N/A	N/A	N/A	

Alexa Fluor, Pacific Blue, Pacific Orange, and Texas Red are trademarks or registered trademarks of Thermo Fisher Scientific; Cy is a registered trademark of Cytiva; IRDye, LI-COR, and Odyssey are registered trademarks of LI-COR Bioscience.

This datasheet was generated on January 10, 2025 at 07:46:39 PM. Visit product page to check for updated information before use. Product link: <https://biotium.com/product/thrombomodulin-cd141-recombinant-monoclonal-mouse-antibody-rthbd-1591/>