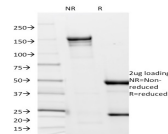


Borrelia burgdorferi p41 Flagellin Monoclonal Mouse Antibody (6802)



Product Description

This antibody recognizes the p41 flagellar antigen (Flagellin) of the bacteria *Borrelia burgdorferi*. *Borrelia burgdorferi* is a species of gram-negative bacteria of the spirochete class of the genus *Borrelia*. *B. burgdorferi* resembles other spirochetes in that it is a highly specialized, motile, two-membrane, spiral shaped bacteria which lives primarily as an extracellular pathogen. *Borrelia burgdorferi* is a primary cause of Lyme disease, a vector-borne, multisystem inflammatory disease which is transmitted to humans by the bite of ticks of the *Ixodes ricinus* complex.

Primary antibodies are available purified, or with a selection of fluorescent CF® dyes and other labels. CF® dyes offer exceptional brightness and photostability. See the [CF® Dye Brochure](#) for more information. Note: Conjugates of blue fluorescent dyes like CF®405S and CF®405M are not recommended for detecting low abundance targets, because blue dyes have lower fluorescence and can give higher non-specific background than other dye colors.

Stock status: Because Biotium offers a large number of antibody and conjugation options, primary antibody conjugates may be made to order. Typical lead times are up to one week for CF® dye and biotin conjugates, and up to 2-3 weeks for fluorescent protein and enzyme conjugates. Please email order@biotium.com to inquire about stock status and lead times before placing your order.

Catalog number key for antibody number 0144, *Borrelia burgdorferi* p41 Flagellin Monoclonal Mouse Antibody (6802)

Product attributes

| | |
|--------------------------------|--|
| Antibody number | #0144 |
| Antibody reactivity (target) | <i>Borrelia burgdorferi</i> p41 Flagellin |
| Antibody type | Primary |
| Host species | Mouse |
| Clonality | Monoclonal |
| Clone | 6802 |
| Isotype | IgG2a, kappa |
| Molecular weight | ~41 kDa |
| Synonyms | <i>B. burgdorferi</i> ; Flagellar filament 41kDa core protein; Lyme disease |
| Human gene symbol | Not Applicable |
| Entrez gene ID | Not Applicable |
| SwissProt | Not Applicable |
| Unigene | Not Applicable |
| Immunogen | A crude sonicate of <i>Borrelia</i> spirochetes |
| Species reactivity | <i>Borrelia burgdorferi</i> |
| Antibody application notes | For coating for ELISA, order Ab without BSA. Optimal dilution and staining procedure for a specific application should be determined by user. Recommended starting concentrations for titration are 1-2 ug/mL for most applications, or 1 ug/million cells/100 uL for flow cytometry |
| Positive control | <i>Borrelia burgdorferi</i> extract or infected cells. Tissue. |
| Shipping condition | Room temperature |
| Storage Conditions | Store at 2 to 8 °C, Protect fluorescent conjugates from light, Note: store BSA-free antibodies at -10 to -35 °C |
| Regulatory status | For research use only (RUO) |
| Antibody/conjugate formulation | Conjugates: 0.1 mg/mL in PBS/0.1% BSA/0.05% azide, HRP conjugates: 0.1 mg/mL in PBS/0.05% BSA, Purified: 0.2 mg/mL in PBS/0.05% BSA/0.05% azide, Purified, BSA-free: 1 mg/mL in PBS without azide |
| Shelf life | Guaranteed for at least 24 months from date of receipt when stored as recommended |
| Antibody research areas | Microbiology |
| Product origin | Product may contain either bovine serum albumin (BSA) from bovine serum (<i>Bos taurus</i>), or recombinant BSA produced in Chinese hamster ovary cells. Inquire for the specific lot. |

| Antibody # prefix | Conjugation | Ex/Em (nm) | Laser line | Detection channel | Dye Features |
|-------------------|--------------------|------------|------------|--------------------------|----------------------------------|
| BNC04 | CF®405S | 404/431 | 405 | DAPI (microscopy), AF405 | CF®405S Features |
| BNC88 | CF®488A | 490/515 | 488 | GFP, FITC | CF®488A Features |
| BNC68 | CF®568 | 562/583 | 532, 561 | RFP, TRITC | CF®568 Features |
| BNC94 | CF®594 | 593/614 | 561 | Texas Red® | CF®594 Features |
| BNC40 | CF®640R | 642/662 | 633-640 | Cy®5 | CF®640R Features |
| BNC47 | CF®647 | 650/665 | 633-640 | Cy®5 | CF®647 Features |
| BNC74 | CF®740 | 742/767 | 633-685 | 775/50 | CF®740 Features |
| BNCB | Biotin | N/A | N/A | N/A | |
| BNUB | Purified | N/A | N/A | N/A | |
| BNUM | Purified, BSA-free | N/A | N/A | N/A | |

Alexa Fluor, Pacific Blue, Pacific Orange, and Texas Red are trademarks or registered trademarks of Thermo Fisher Scientific; Cy is a registered trademark of Cytiva; IRDye, LI-COR, and Odyssey are registered trademarks of LI-COR Bioscience.

This datasheet was generated on September 10, 2025 at 06:39:29 PM. Visit product page to check for updated information before use.
Product link: <https://biotium.com/product/borrelia-burgdorferi-p41-flagellin-monoclonal-mouse-antibody-6802/>