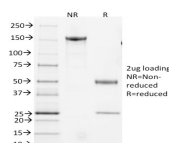


# CD3e (Mouse) Hamster Monoclonal Antibody (145-2C11)



## Product Description

CD3 chains. CD3 plays a critical role in TCR signal transduction, T-cell activation, and antigen recognition by binding the peptide/MHC antigen complex. The 145-2C11 antibody is useful for in vitro blocking and activation assays, as well as apoptosis induction and in vivo T-cell depletion.

Also view our [CD3e Monoclonal Mouse Biotium Choice Antibody \(SK7\)](#). The antibody belongs to the Biotium Choice list of select antibodies that have been developed and validated in-house for optimal performance. The antibody has been validated in flow cytometry.

Primary antibodies are available purified, or with a selection of fluorescent CF® dyes and other labels. CF® dyes offer exceptional brightness and photostability. See the [CF® Dye Brochure](#) for more information. Note: Conjugates of blue fluorescent dyes like CF®405S and CF®405M are not recommended for detecting low abundance targets, because blue dyes have lower fluorescence and can give higher non-specific background than other dye colors.

**Stock status:** Because Biotium offers a large number of antibody and conjugation options, primary antibody conjugates may be made to order. Typical lead times are up to one week for CF® dye and biotin conjugates, and up to 2-3 weeks for fluorescent protein and enzyme conjugates. Please email [order@biotium.com](mailto:order@biotium.com) to inquire about stock status and lead times before placing your order.

**Catalog number key for antibody number 2013, Anti-CD3e (145-2C11)**

## Product attributes

Antibody number	#2013
Antibody reactivity (target)	CD3e
Antibody type	Primary
Host species	Armenian Hamster
Clonality	Monoclonal
Clone	145-2C11
Isotype	IgG, kappa
Molecular weight	23 kDa
Synonyms	CD3 epsilon; CD3e; CD3e antigen epsilon polypeptide (TIT3 complex); CD3e molecule; epsilon (CD3-TCR complex); IMD18; T-cell surface antigen T3/Leu-4 epsilon chain; T-cell surface glycoprotein CD3 epsilon chain; T3E; TCRE
Human gene symbol	Cd3e (Mouse)
Entrez gene ID	12501
SwissProt	P22646
Unigene	210361
Immunogen	H2Kb specific Mouse cytotoxic T lymphocyte clone BM10 37
Antibody target cellular localization	Plasma membrane
Expected antibody applications	Flow, surface (published for clone), Functional studies (published for clone), IP (published for clone)
Species reactivity	Mouse
Positive control	MPBMC's or Thymus or Lymph Node.
Shipping condition	Room temperature
Storage Conditions	Store at 2 to 8 °C. Protect fluorescent conjugates from light, Note: store BSA-free antibodies at -10 to -35 °C
Regulatory status	For research use only (RUO)
Antibody/conjugate formulation	Conjugates: 0.1 mg/mL in PBS/0.1% BSA/0.05% azide, HRP conjugates: 0.1 mg/mL in PBS/0.05% BSA, Purified: 0.2 mg/mL in PBS/0.05% BSA/0.05% azide, Purified, BSA-free: 1 mg/mL in PBS without azide
Shelf life	Guaranteed for at least 24 months from date of receipt when stored as recommended
Product origin	Product may contain either bovine serum albumin (BSA) from bovine serum (Bos taurus), or recombinant BSA produced in Chinese hamster ovary cells. Inquire for the specific lot.
Cell/tissue expression	T-cells
Tumor expression	Leukemia/lymphoma

Antibody # prefix	Conjugation	Ex/Em (nm)	Laser line	Detection channel	Dye Features
BNC04	CF®405S	404/431	405	DAPI (microscopy), AF405	<a href="#">CF®405S Features</a>
BNC88	CF®488A	490/515	488	GFP, FITC	<a href="#">CF®488A Features</a>
BNC68	CF®568	562/583	532, 561	RFP, TRITC	<a href="#">CF®568 Features</a>
BNC94	CF®594	593/614	561	Texas Red®	<a href="#">CF®594 Features</a>
BNC40	CF®640R	642/662	633-640	Cy®5	<a href="#">CF®640R Features</a>
BNC47	CF®647	650/665	633-640	Cy®5	<a href="#">CF®647 Features</a>
BNC74	CF®740	742/767	633-685	775/50	<a href="#">CF®740 Features</a>
BNCB	Biotin	N/A	N/A	N/A	
BNUB	Purified	N/A	N/A	N/A	
BNUM	Purified, BSA-free	N/A	N/A	N/A	

Alexa Fluor, Pacific Blue, Pacific Orange, and Texas Red are trademarks or registered trademarks of Thermo Fisher Scientific; Cy is a registered trademark of Cytiva; IRDye, LI-COR, and Odyssey are registered trademarks of LI-COR Bioscience.

## References

Note: References for this clone sold by other suppliers may be listed for expected applications.

- PNAS USA (1987) 84:1374-1378. (Flow, IP)
- Eur J Immunol (1990) 20: 509-515. (functional studies)
- J Immunol (2003) 171:2496-2503. (Flow; IP; functional studies)

This datasheet was generated on July 21, 2025 at 06:58:53 AM. Visit product page to check for updated information before use.

Product link: <https://biotium.com/product/cd3e-mouse-hamster-monoclonal-antibody-145-2c11/>