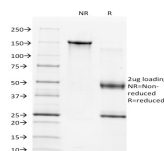


# TIMP1 Monoclonal Mouse Antibody (2A5)



## Product Description

TIMP-1, TIMP-2, TIMP-3 and TIMP-4 (for tissue inhibitor of metalloproteinases -1, -2, -3 and -4) complex with metalloproteinases such as collagenases, gelatinases and stromelysins, resulting in irreversible inactivation of the metalloproteinase. TIMP-1 is identical to EPA (erythroid-potentiating activity). PTH has been shown to be a regulator of TIMP-2 in osteoblastic cells. TIMP-3 may be involved in regulating trophoblastic invasion of the uterus as well as in regulating remodeling of the extracellular matrix during the folding of epithelia, and in the formation, branching and expansion of epithelial tubes. TIMP-4 is most highly expressed in heart tissues. Studies have demonstrated that TIMP1 is useful as a biomarker for early detection of colorectal cancer, outperforming CEA. Additionally, TIMP1 studies have demonstrated its role in CRC tumorigenesis, as well as observing its overexpression in metastatic lymph nodes.

Primary antibodies are available purified, or with a selection of fluorescent CF® dyes and other labels. CF® dyes offer exceptional brightness and photostability. See the [CF® Dye Brochure](#) for more information. Note: Conjugates of blue fluorescent dyes like CF®405S and CF®405M are not recommended for detecting low abundance targets, because blue dyes have lower fluorescence and can give higher non-specific background than other dye colors.

**Stock status:** Because Biotium offers a large number of antibody and conjugation options, primary antibody conjugates may be made to order. Typical lead times are up to one week for CF® dye and biotin conjugates, and up to 2-3 weeks for fluorescent protein and enzyme conjugates. Please email [order@biotium.com](mailto:order@biotium.com) to inquire about stock status and lead times before placing your order.

**Catalog number key for antibody number 1648, Anti-TIMP1 (2A5)**

## Product attributes

<b>Antibody number</b>	#1648
<b>Antibody reactivity (target)</b>	TIMP1
<b>Antibody type</b>	Primary
<b>Host species</b>	Mouse
<b>Clonality</b>	Monoclonal
<b>Clone</b>	2A5
<b>Isotype</b>	IgG1, kappa
<b>Molecular weight</b>	23 kDa
<b>Synonyms</b>	Collagenase inhibitor; EPO; Erythroid-Potentiating Activity (EPA); Fibroblast collagenase inhibitor; Human Collagenase Inhibitor (HCI); Metalloproteinase inhibitor 1; Tissue Inhibitor of Metalloproteinase 1 (TIMP1)
<b>Human gene symbol</b>	TIMP1
<b>Entrez gene ID</b>	7076
<b>SwissProt</b>	P01033
<b>Unigene</b>	522832
<b>Immunogen</b>	A synthetic peptide (aa 72-82) of human TIMP1 protein (FQALGDAADIR)
<b>Antibody target cellular localization</b>	Secreted (extracellular)
<b>Species reactivity</b>	Human
<b>Expected antibody applications</b>	IHC (FFPE) (published for clone), WB (published for clone)
<b>Antibody application notes</b>	ELISA: Use Ab at 2-4 ug/mL for coating; Order Ab without BSA; Optimal dilution for a specific application should be determined. Higher concentration may be required for direct detection using primary antibody conjugates than for indirect detection with secondary antibody
<b>Positive control</b>	293 cells. Colon Carcinoma.
<b>Shipping condition</b>	Room temperature
<b>Storage Conditions</b>	Store at 2 to 8 °C. Protect fluorescent conjugates from light. Note: store BSA-free antibodies at -10 to -35 °C
<b>Regulatory status</b>	For research use only (RUO)
<b>Antibody/conjugate formulation</b>	Conjugates: 0.1 mg/mL in PBS/0.1% BSA/0.05% azide, HRP conjugates: 0.1 mg/mL in PBS/0.05% BSA, Purified: 0.2 mg/mL in PBS/0.05% BSA/0.05% azide, Purified, BSA-free: 1 mg/mL in PBS without azide
<b>Shelf life</b>	Guaranteed for at least 24 months from date of receipt when stored as recommended
<b>Product origin</b>	Product may contain either bovine serum albumin (BSA) from bovine serum ( <i>Bos taurus</i> ), or recombinant BSA produced in Chinese hamster ovary cells. Inquire for the specific lot.
<b>Tumor expression</b>	Colon cancer

Antibody # prefix	Conjugation	Ex/Em (nm)	Laser line	Detection channel	Dye Features
BNC04	CF®405S	404/431	405	DAPI (microscopy), AF405	<a href="#">CF®405S Features</a>
BNC88	CF®488A	490/515	488	GFP, FITC	<a href="#">CF®488A Features</a>
BNC68	CF®568	562/583	532, 561	RFP, TRITC	<a href="#">CF®568 Features</a>
BNC94	CF®594	593/614	561	Texas Red®	<a href="#">CF®594 Features</a>
BNC40	CF®640R	642/662	633-640	Cy®5	<a href="#">CF®640R Features</a>
BNC47	CF®647	650/665	633-640	Cy®5	<a href="#">CF®647 Features</a>
BNC74	CF®740	742/767	633-685	775/50	<a href="#">CF®740 Features</a>
BNCB	Biotin	N/A	N/A	N/A	
BNUB	Purified	N/A	N/A	N/A	
BNUM	Purified, BSA-free	N/A	N/A	N/A	

Alexa Fluor, Pacific Blue, Pacific Orange, and Texas Red are trademarks or registered trademarks of Thermo Fisher Scientific; Cy is a registered trademark of Cytiva; IRDye, LI-COR, and Odyssey are registered trademarks of LI-COR Bioscience.

## References

Note: References for this clone sold by other suppliers may be listed for expected applications.

Gut (1998) 43:791-797. (WB; IHC, FFPE)

This datasheet was generated on November 29, 2024 at 04:33:58 AM. Visit product page to check for updated information before use.

Product link: <https://biotium.com/product/timp1-monoclonal-mouse-antibody-2a5/>