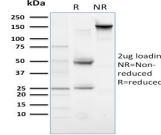


PLK1 Monoclonal Mouse Antibody (AZ44)



Product Description

Plk (for polo-like kinase) encodes a serine/threonine kinase that is closely related to polo and CDC5, genes that are required for passage through mitosis in *Drosophila* and *Saccharomyces*, respectively. Polo and Cdc5 both code for proteins that are involved in regulating the function of the mitotic spindle. Plk protein accumulates in the cell during the S and G2 phases of the cell cycle; Plk protein content and catalytic activity peak at the onset of mitosis, followed by a rapid reduction after mitosis. Plk expression is detectable in mitotically active tissues such as colon and placenta, as well as in tumors of various origins. It has also been suggested that Plk may serve as a marker of cell proliferation. Required for recovery after DNA damage checkpoint and entry into mitosis. Required for kinetochore localization of BUB1B. Phosphorylates SGOL1. Required for spindle pole localization of isoform 3 of SGOL1 and plays a role in regulating its centriole cohesion function. Phosphorylates BORA, and thereby promotes the degradation of BORA. Contributes to the regulation of AURKA function. Regulates TP53 stability through phosphorylation of TOPORS. Useful for confirming that extracts have maintained CSF status and have not yet been activated into interphase. Primary antibodies are available purified, or with a selection of fluorescent CF® dyes and other labels. CF® dyes offer exceptional brightness and photostability. See the [CF® Dye Brochure](#) for more information. Note: Conjugates of blue fluorescent dyes like CF®405S and CF®405M are not recommended for detecting low abundance targets, because blue dyes have lower fluorescence and can give higher non-specific background than other dye colors. **Stock status:** Because Biotium offers a large number of antibody and conjugation options, primary antibody conjugates may be made to order. Typical lead times are up to one week for CF® dye and biotin conjugates, and up to 2-3 weeks for fluorescent protein and enzyme conjugates. Please email order@biotium.com to inquire about stock status and lead times before placing your order.

References

Note: References for this clone sold by other suppliers may be listed for expected applications.

Cell Cycle (2014) 13:11, 1727-1736. (IP, WB)

Product attributes

Antibody number	#3101
Antibody reactivity (target)	PLK1
Antibody type	Primary
Host species	Mouse
Clonality	Monoclonal
Clone	AZ44
Isotype	IgG1, kappa
Molecular weight	66 kDa
Synonyms	Cell cycle regulated protein kinase; Polo like kinase 1 (PLK1); Serine/threonine-protein kinase PLK1; STPK13
Human gene symbol	plk1.S
Entrez gene ID	380481
SwissProt	P70032
Unigene	28141
Immunogen	Recombinant full-length PLK1 Xenopus laevis protein
Antibody target cellular localization	Nucleus & cytoplasm
Species reactivity	Xenopus laevis
Expected antibody applications	IP (published for clone), WB (published for clone)
Antibody application notes	Does not react with Human or Mouse; ELISA: For coating, order antibody without BSA; Western blot 1-2 ug/mL; Optimal dilution for a specific application should be determined by user., Higher concentration may be required for direct detection using primary antibody conjugates than for indirect detection with secondary antibody
Positive control	Mitotic CSF Xenopus egg extract.
Shipping condition	Room temperature
Storage Conditions	Store at 2 to 8 °C, Protect fluorescent conjugates from light, Note: store BSA-free antibodies at -10 to -35 °C
Regulatory status	For research use only (RUO)
Antibody/conjugate formulation	Conjugates: 0.1 mg/mL in PBS/0.1% BSA/0.05% azide, HRP conjugates: 0.1 mg/mL in PBS/0.05% BSA, Purified: 0.2 mg/mL in PBS/0.05% BSA/0.05% azide, Purified, BSA-free: 1 mg/mL in PBS without azide
Shelf life	Guaranteed for at least 24 months from date of receipt when stored as recommended

Antibody # prefix	Conjugation	Ex/Em (nm)	Laser line	Detection channel	Dye Features
BNC04	CF®405S	404/431	405	DAPI (microscopy), AF405	CF®405S Features
BNC88	CF®488A	490/515	488	GFP, FITC	CF®488A Features
BNC68	CF®568	562/583	532, 561	RFP, TRITC	CF®568 Features
BNC94	CF®594	593/614	561	Texas Red®	CF®594 Features
BNC40	CF®640R	642/662	633-640	Cy®5	CF®640R Features
BNC47	CF®647	650/665	633-640	Cy®5	CF®647 Features
BNCB	Biotin	N/A	N/A	N/A	
BNUB	Purified	N/A	N/A	N/A	
BNUM	Purified, BSA-free	N/A	N/A	N/A	

Alexa Fluor, Pacific Blue, Pacific Orange, and Texas Red are trademarks or registered trademarks of Thermo Fisher Scientific; Cy is a registered trademark of Cytiva; IRDye, LI-COR, LI-COR Bioscience.

This datasheet was generated on June 25, 2024 at 07:23:46 PM. Visit product page to check for updated information before use.

Product link: <https://biotium.com/product/plk1-monoclonal-mouse-antibody-az44/>