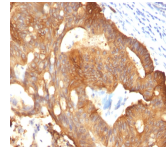


# Cytokeratin 8 Monoclonal Mouse Antibody (B22.1)



## Product Description

Cytokeratin 8 (CK8) belongs to the type II (or B or basic) subfamily of high molecular weight cytokeratins and exists in combination with cytokeratin 18 (CK18). CK8 is primarily found in the non-squamous epithelia and is present in majority of adenocarcinomas and ductal carcinomas. It is absent in squamous cell carcinomas. Hepatocellular carcinomas are defined by the use of antibodies that recognize only cytokeratin 8 and 18. CK8 exists on several types of normal and neoplastic epithelia, including many ductal and glandular epithelia such as colon, stomach, small intestine, trachea, and esophagus as well as in transitional epithelium. Anti-CK8 does not react with skeletal muscle or nerve cells. Epithelioid sarcoma, chordoma, and adamantinoma show strong positivity corresponding to that of simple epithelia (with antibodies against CK8, CK18 and CK19). Reportedly, anti-CK8 is useful for the differentiation of lobular ('ring-like, perinuclear') from ductal ('peripheral-predominant') carcinoma of the breast. Primary antibodies are available purified, or with a selection of fluorescent CF<sup>®</sup> dyes and other labels. CF<sup>®</sup> dyes offer exceptional brightness and photostability. See the [CF<sup>®</sup> Dye Brochure](#) for more information. Note: Conjugates of blue fluorescent dyes like CF<sup>®</sup>405S and CF<sup>®</sup>405M are not recommended for detecting low abundance targets, because blue dyes have lower fluorescence and can give higher non-specific background than other dye colors. **Stock status:** Because Biotium offers a large number of antibody and conjugation options, primary antibody conjugates may be made to order. Typical lead times are up to one week for CF<sup>®</sup> dye and biotin conjugates, and up to 2-3 weeks for fluorescent protein and enzyme conjugates. Please email [order@biotium.com](mailto:order@biotium.com) to inquire about stock status and lead times before placing your order.

## Product attributes

Antibody number	#1266
Antibody reactivity (target)	Cytokeratin 8, KRT8
Antibody type	Primary
Host species	Mouse
Clonality	Monoclonal
Clone	B22.1
Isotype	IgG1, kappa
Molecular weight	52.5 kDa
Synonyms	CARD2; CK8; CYK8; CYKER; Cytokeratin Endo A; DreK8; EndoA; K2C8; K8; Keratin 8; Krt 2.8; KRT8; Type-II Keratin Kb8
Human gene symbol	KRT8
Entrez gene ID	3856
SwissProt	P05787
Unigene	533782 & 708445
Immunogen	Cytoskeletal preparation from HeLa cells
Verified antibody applications	IF (verified), IHC (FFPE) (verified), WB (verified)
Antibody target cellular localization	Cytoskeleton
Species reactivity	Cow, Human, Pig, Rabbit, Sheep
Positive control	MCF-7 or A431 cells. Skin, Colon, lung or breast carcinoma
Shipping condition	Room temperature
Storage Conditions	Store at 2 to 8 °C, Protect fluorescent conjugates from light, Note: store BSA-free antibodies at -10 to -35 °C
Regulatory status	For research use only (RUO)
Antibody/conjugate formulation	Conjugates: 0.1 mg/mL in PBS/0.1% BSA/0.05% azide, HRP conjugates: 0.1 mg/mL in PBS/0.05% BSA, Purified: 0.2 mg/mL in PBS/0.05% BSA/0.05% azide, Purified, BSA-free: 1 mg/mL in PBS without azide
Shelf life	Guaranteed for at least 24 months from date of receipt when stored as recommended
Cell/tissue expression	Epithelial cells
Antibody research areas	Cancer, Cytoskeleton
Tumor expression	Adenocarcinoma, Paget cell marker

Antibody # prefix	Conjugation	Ex/Em (nm)	Laser line	Detection channel	Dye Features
BNC04	CF <sup>®</sup> 405S	404/431	405	DAPI (microscopy), AF405	<a href="#">CF<sup>®</sup>405S Features</a>
BNC88	CF <sup>®</sup> 488A	490/515	488	GFP, FITC	<a href="#">CF<sup>®</sup>488A Features</a>
BNC68	CF <sup>®</sup> 568	562/583	532, 561	RFP, TRITC	<a href="#">CF<sup>®</sup>568 Features</a>
BNC94	CF <sup>®</sup> 594	593/614	561	Texas Red <sup>®</sup>	<a href="#">CF<sup>®</sup>594 Features</a>
BNC40	CF <sup>®</sup> 640R	642/662	633-640	Cy <sup>®</sup> 5	<a href="#">CF<sup>®</sup>640R Features</a>
BNC47	CF <sup>®</sup> 647	650/665	633-640	Cy <sup>®</sup> 5	<a href="#">CF<sup>®</sup>647 Features</a>
BNCB	Biotin	N/A	N/A	N/A	
BNUB	Purified	N/A	N/A	N/A	
BNUM	Purified, BSA-free	N/A	N/A	N/A	

Alexa Fluor, Pacific Blue, Pacific Orange, and Texas Red are trademarks or registered trademarks of Thermo Fisher Scientific; Cy is a registered trademark of Cytiva; IRDye, LI-COR, LI-COR Bioscience.