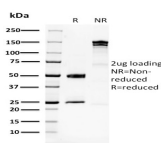


# Glucose 6-Phosphate Isomerase Monoclonal Mouse Antibody (CPTC-GPI-1)



## Product Description

Besides its role as a glycolytic enzyme, mammalian GPI can function as a tumor-secreted cytokine and an angiogenic factor (AMF) that stimulates endothelial cell motility. GPI is also a neurotrophic factor (Neuroleukin) for spinal and sensory neurons. Defects in GPI are the cause of hemolytic anemia non-spherocytic due to glucose phosphate isomerase deficiency.

Primary antibodies are available purified, or with a selection of fluorescent CF® dyes and other labels. CF® dyes offer exceptional brightness and photostability. See the [CF® Dye Brochure](#) for more information. Note: Conjugates of blue fluorescent dyes like CF®405S and CF®405M are not recommended for detecting low abundance targets, because blue dyes have lower fluorescence and can give higher non-specific background than other dye colors.

**Stock status:** Because Biotium offers a large number of antibody and conjugation options, primary antibody conjugates may be made to order. Typical lead times are up to one week for CF® dye and biotin conjugates, and up to 2-3 weeks for fluorescent protein and enzyme conjugates. Please email [order@biotium.com](mailto:order@biotium.com) to inquire about stock status and lead times before placing your order.

**Catalog number key for antibody number 2257, Anti-Glucose 6-Phosphate Isomerase (CPTC-GPI-1)**

## Product attributes

|  |  |
|--|--|
| <b>Antibody number</b>                       | #2257  |
| <b>Antibody reactivity (target)</b>          | Glucose 6-Phosphate Isomerase  |
| <b>Antibody type</b>                         | Primary  |
| <b>Host species</b>                          | Mouse  |
| <b>Clonality</b>                             | Monoclonal   |
| <b>Clone</b>                                 | CPTC-GPI-1   |
| <b>Isotype</b>                               | IgG2a, kappa   |
| <b>Molecular weight</b>                      | 55 kDa   |
| <b>Synonyms</b>                              | AMF; aurocrine motility factor; EC 5.2.1.9; GNPI; Gpi1; hexose monophosphate isomerase; neuroleukin; NLK; oxoisomerase; PGi; PHI; phosphoglucose isomerase; phosphosaccharomutase; SA-36; sperm antigen 36 |
| <b>Human gene symbol</b>                     | GPI  |
| <b>Entrez gene ID</b>                        | 2821   |
| <b>SwissProt</b>                             | P06744   |
| <b>Unigene</b>                               | 466471   |
| <b>Immunogen</b>                             | Recombinant human full-length GPI protein  |
| <b>Verified antibody applications</b>        | IF (verified), IHC (FFPE) (verified), WB (verified)  |
| <b>Antibody target cellular localization</b> | Cytoplasmic, Secreted (extracellular)  |
| <b>Species reactivity</b>                    | Human  |
| <b>Positive control</b>                      | T47D, PC3, MCF-7, HepG2 and A549 cells. Brain, pancreas or thyroid carcinoma.  |
| <b>Shipping condition</b>                    | Room temperature   |
| <b>Storage Conditions</b>                    | Store at 2 to 8 °C, Protect fluorescent conjugates from light, Note: store BSA-free antibodies at -10 to -35 °C  |
| <b>Regulatory status</b>                     | For research use only (RUO)  |
| <b>Antibody/conjugate formulation</b>        | Conjugates: 0.1 mg/mL in PBS/0.1% BSA/0.05% azide, HRP conjugates: 0.1 mg/mL in PBS/0.05% BSA, Purified: 0.2 mg/mL in PBS/0.05% BSA/0.05% azide, Purified, BSA-free: 1 mg/mL in PBS without azide          |
| <b>Validated in protein array</b>            | Monospecific   |
| <b>Shelf life</b>                            | Guaranteed for at least 24 months from date of receipt when stored as recommended  |
| <b>Product origin</b>                        | Product may contain either bovine serum albumin (BSA) from bovine serum ( <i>Bos taurus</i> ), or recombinant BSA produced in Chinese hamster ovary cells. Inquire for the specific lot.                   |

| Antibody # prefix | Conjugation        | Ex/Em (nm) | Laser line | Detection channel        | Dye Features                     |
|-------------------|--------------------|------------|------------|--------------------------|----------------------------------|
| BNC04             | CF®405S            | 404/431    | 405        | DAPI (microscopy), AF405 | <a href="#">CF®405S Features</a> |
| BNC88             | CF®488A            | 490/515    | 488        | GFP, FITC                | <a href="#">CF®488A Features</a> |
| BNC68             | CF®568             | 562/583    | 532, 561   | RFP, TRITC               | <a href="#">CF®568 Features</a>  |
| BNC94             | CF®594             | 593/614    | 561        | Texas Red®               | <a href="#">CF®594 Features</a>  |
| BNC40             | CF®640R            | 642/662    | 633-640    | Cy®5                     | <a href="#">CF®640R Features</a> |
| BNC47             | CF®647             | 650/665    | 633-640    | Cy®5                     | <a href="#">CF®647 Features</a>  |
| BNC74             | CF®740             | 742/767    | 633-685    | 775/50                   | <a href="#">CF®740 Features</a>  |
| BNCB              | Biotin             | N/A        | N/A        | N/A                      |                                  |
| BNUB              | Purified           | N/A        | N/A        | N/A                      |                                  |
| BNUM              | Purified, BSA-free | N/A        | N/A        | N/A                      |                                  |

Alexa Fluor, Pacific Blue, Pacific Orange, and Texas Red are trademarks or registered trademarks of Thermo Fisher Scientific; Cy is a registered trademark of Cytiva; IRDye, LI-COR, and Odyssey are registered trademarks of LI-COR Bioscience.

This datasheet was generated on November 27, 2024 at 04:31:37 AM. Visit product page to check for updated information before use.

Product link: <https://biotium.com/product/glucose-6-phosphate-isomerase-monoclonal-mouse-antibody-cptc-gpi-1/>