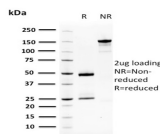


Squamous Cell Carcinoma Antigen 1 Monoclonal Mouse Antibody (CPTC-SERPINB3-2)



Product Description

Metastasis of a primary tumor to a distant site is determined through signaling cascades that break down interactions between the cell and extracellular matrix proteins. Among the proteins mediating metastasis are serine proteases, such as neutrophil elastase. Serpins are family of serine protease inhibitors, contain a stretch of peptide that mimics a true substrate for a corresponding serine protease. Serine proteases bind to this substrate mimic in a 1:1 stoichiometric fashion and become catalytically inactive. Aberrant expression of serpin family members can contribute to a number of conditions, including emphysema (-1 antitrypsin deficiency), fatal bleeding (elastase to Thrombin specificity) and thrombosis (antithrombin deficiency), and are indicators of cancer stage phenotypes (circulating levels of squamous cell carcinoma antigen, known as SCCA1, increase in advancing stages of some cervical, lung, esophageal and head and neck cancers). SCCA1 expression has been demonstrated to promote oncogenic transformation and epithelial-mesenchymal transition (EMT) in mammary epithelial cells, and its silencing in breast cancer cells has been shown to halt their proliferation.

Primary antibodies are available purified, or with a selection of fluorescent CF® dyes and other labels. CF® dyes offer exceptional brightness and photostability. See the [CF® Dye Brochure](#) for more information. Note: Conjugates of blue fluorescent dyes like CF®405S and CF®405M are not recommended for detecting low abundance targets, because blue dyes have lower fluorescence and can give higher non-specific background than other dye colors.

Stock status: Because Biotium offers a large number of antibody and conjugation options, primary antibody conjugates may be made to order. Typical lead times are up to one week for CF® dye and biotin conjugates, and up to 2-3 weeks for fluorescent protein and enzyme conjugates. Please email order@biotium.com to inquire about stock status and lead times before placing your order.

Catalog number key for antibody number 2250, Anti-Squamous Cell Carcinoma Antigen 1 (CPTC-SERPINB3-2)

Product attributes

Antibody number	#2250
Antibody reactivity (target)	Squamous Cell Carcinoma Antigen 1
Antibody type	Primary
Host species	Mouse
Clonality	Monoclonal
Clone	CPTC-SERPINB3-2
Isotype	IgG1, kappa
Molecular weight	39 kDa
Synonyms	HsT1196; Protein T4 A; Protein T4-A; SCC; SCCA-PD; SCCA1; SCCAPD; Serine (or cysteine) proteinase inhibitor clade B (ovalbumin) member 3; Serpin B3; SERPINB3; Squamous cell carcinoma antigen 1; T4 A; T4-A
Human gene symbol	SERPINB3
Entrez gene ID	6317
SwissProt	P29508
Unigene	227948
Immunogen	Recombinant human full-length SERPINB3 protein
Antibody target cellular localization	Cytoplasmic
Species reactivity	Human
Expected antibody applications	WB (published for clone)
Antibody application notes	Western blot 0.5-1.0 ug/mL; Optimal dilution for a specific application should be determined.
Positive control	U-2197, HaCaT, Squamous cells. Expressed in some hepatocellular carcinoma.
Shipping condition	Room temperature
Storage Conditions	Store at 2 to 8 °C, Protect fluorescent conjugates from light, Note: store BSA-free antibodies at -10 to -35 °C
Regulatory status	For research use only (RUO)
Antibody/conjugate formulation	Conjugates: 0.1 mg/mL in PBS/0.1% BSA/0.05% azide, HRP conjugates: 0.1 mg/mL in PBS/0.05% BSA, Purified: 0.2 mg/mL in PBS/0.05% BSA/0.05% azide, Purified, BSA-free: 1 mg/mL in PBS without azide
Validated in protein array	Monospecific
Shelf life	Guaranteed for at least 24 months from date of receipt when stored as recommended
Product origin	Product may contain either bovine serum albumin (BSA) from bovine serum (Bos taurus), or recombinant BSA produced in Chinese hamster ovary cells. Inquire for the specific lot.
Tumor expression	Squamous cell carcinoma

Antibody # prefix	Conjugation	Ex/Em (nm)	Laser line	Detection channel	Dye Features
BNC04	CF®405S	404/431	405	DAPI (microscopy), AF405	CF®405S Features
BNC88	CF®488A	490/515	488	GFP, FITC	CF®488A Features
BNC68	CF®568	562/583	532, 561	RFP, TRITC	CF®568 Features
BNC94	CF®594	593/614	561	Texas Red®	CF®594 Features
BNC40	CF®640R	642/662	633-640	Cy®5	CF®640R Features
BNC47	CF®647	650/665	633-640	Cy®5	CF®647 Features
BNC74	CF®740	742/767	633-685	775/50	CF®740 Features
BNCB	Biotin	N/A	N/A	N/A	
BNUB	Purified	N/A	N/A	N/A	
BNUM	Purified, BSA-free	N/A	N/A	N/A	

Alexa Fluor, Pacific Blue, Pacific Orange, and Texas Red are trademarks or registered trademarks of Thermo Fisher Scientific; Cy is a registered trademark of Cytiva; IRDye, LI-COR, and Odyssey are registered trademarks of LI-COR Bioscience.

References

Note: References for this clone sold by other suppliers may be listed for expected applications.

Wellcome Open Res (2018) 3: 51. (WB)

This datasheet was generated on November 27, 2024 at 06:34:07 AM. Visit product page to check for updated information before use.

Product link: <https://biotium.com/product/squamous-cell-carcinoma-antigen-1-monoclonal-mouse-antibody-cptc-serpinb3-2/>