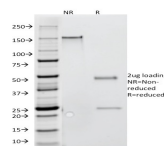


# Interferon Gamma Monoclonal Mouse Antibody (G-23)



## Product Description

This antibody recognizes a protein of 20-25 kDa, identified as human interferon gamma (IFN- $\gamma$ ). Multiple forms exist due to variable glycosylation and under non-denaturing conditions due to dimers and tetramers. T lymphocytes and NK cells mainly produce IFN- $\gamma$ . It is a pleiotropic cytokine involved in the regulation of nearly all phases of immune and inflammatory responses, including the activation, growth and differentiation of T cell, B cells, macrophages, NK cells and other cell types such as endothelial cells and fibroblasts. It has weak anti-viral and anti-proliferative activity, and potentiates the antiviral and anti-tumor effects of IFN- $\gamma$  (type I interferon).

Primary antibodies are available purified, or with a selection of fluorescent CF® dyes and other labels. CF® dyes offer exceptional brightness and photostability. See the [CF® Dye Brochure](#) for more information. Note: Conjugates of blue fluorescent dyes like CF®405S and CF®405M are not recommended for detecting low abundance targets, because blue dyes have lower fluorescence and can give higher non-specific background than other dye colors.

**Stock status:** Because Biotium offers a large number of antibody and conjugation options, primary antibody conjugates may be made to order. Typical lead times are up to one week for CF® dye and biotin conjugates, and up to 2-3 weeks for fluorescent protein and enzyme conjugates. Please email [order@biotium.com](mailto:order@biotium.com) to inquire about stock status and lead times before placing your order.

**Catalog number key for antibody number 0219, Anti-Interferon Gamma (G-23)**

## Product attributes

<b>Antibody number</b>	#0219
<b>Antibody reactivity (target)</b>	Interferon Gamma
<b>Antibody type</b>	Primary
<b>Host species</b>	Mouse
<b>Clonality</b>	Monoclonal
<b>Clone</b>	G-23
<b>Isotype</b>	IgG1, kappa
<b>Molecular weight</b>	20-25 kDa
<b>Synonyms</b>	AMCF1; Beta thromboglobulin like protein; CXC chemokine ligand 8 (CXCL8); Emotakin; Granulocyte chemotactic protein 1 (GCP1); IFG; IFI; IFN Immune; IFN-gamma (IFNG); Interleukin 8; Interferon gamma; LECT; LUCT; Lymphocyte derived neutrophil activating factor; LYNAP; Macrophage Activating Factor (MAF); Monocyte derived neutrophil activating protein (MONAP); Monocyte derived neutrophil chemotactic factor (MDNCF); Neutrophil activating factor (NAF); Neutrophil activating peptide 1 (NAP1); Neutrophil activating protein 1 (NAP1); SCYB8; T cell chemotactic factor; T Cell Interferon; Type II Interferon
<b>Human gene symbol</b>	IFNG
<b>Entrez gene ID</b>	3458
<b>SwissProt</b>	P01579
<b>Unigene</b>	856
<b>Immunogen</b>	Purified recombinant human IFN-gamma
<b>Antibody target cellular localization</b>	Secreted (extracellular)
<b>Species reactivity</b>	Human
<b>Expected antibody applications</b>	IHC (frozen) (published for clone), IHC (FFPE) (published for clone)
<b>Antibody application notes</b>	Flow cytometry: 0.5-1 ug/million cells; Immunofluorescence: 0.5-1 ug/mL; Optimal dilution for a specific application should be determined., Higher concentration may be required for direct detection using primary antibody conjugates than for indirect detection with secondary antibody
<b>Positive control</b>	PMA stimulated human peripheral blood mononuclear cells.
<b>Shipping condition</b>	Room temperature
<b>Storage Conditions</b>	Note: store BSA-free antibodies at -10 to -35 °C, Store at 2 to 8 °C, Protect fluorescent conjugates from light
<b>Regulatory status</b>	For research use only (RUO)
<b>Antibody/conjugate formulation</b>	Conjugates: 0.1 mg/mL in PBS/0.1% BSA/0.05% azide, HRP conjugates: 0.1 mg/mL in PBS/0.05% BSA, Purified: 0.2 mg/mL in PBS/0.05% BSA/0.05% azide, Purified, BSA-free: 1 mg/mL in PBS without azide
<b>Shelf life</b>	Guaranteed for at least 24 months from date of receipt when stored as recommended
<b>Product origin</b>	Product may contain either bovine serum albumin (BSA) from bovine serum (Bos taurus), or recombinant BSA produced in Chinese hamster ovary cells. Inquire for the specific lot.
<b>Cell/tissue expression</b>	NK cells, T-cells

Antibody # prefix	Conjugation	Ex/Em (nm)	Laser line	Detection channel	Dye Features
BNC04	CF®405S	404/431	405	DAPI (microscopy), AF405	<a href="#">CF®405S Features</a>
BNC88	CF®488A	490/515	488	GFP, FITC	<a href="#">CF®488A Features</a>
BNC68	CF®568	562/583	532, 561	RFP, TRITC	<a href="#">CF®568 Features</a>
BNC94	CF®594	593/614	561	Texas Red®	<a href="#">CF®594 Features</a>
BNC40	CF®640R	642/662	633-640	Cy®5	<a href="#">CF®640R Features</a>
BNC47	CF®647	650/665	633-640	Cy®5	<a href="#">CF®647 Features</a>
BNC74	CF®740	742/767	633-685	775/50	<a href="#">CF®740 Features</a>
BNCB	Biotin	N/A	N/A	N/A	
BNUB	Purified	N/A	N/A	N/A	
BNUM	Purified, BSA-free	N/A	N/A	N/A	

Alexa Fluor, Pacific Blue, Pacific Orange, and Texas Red are trademarks or registered trademarks of Thermo Fisher Scientific; Cy is a registered trademark of Cytiva; IRDye, LI-COR, and Odyssey are registered trademarks of LI-COR Bioscience.

## References

Note: References for this clone sold by other suppliers may be listed for expected applications.

1. Eur J Dermatol (2011) 21(1): 53-7. (IHC, frozen)
2. Infection Immunity (2005) 73(7): 3923-3928. (IHC, FFPE)

This datasheet was generated on July 18, 2025 at 05:28:18 AM. Visit product page to check for updated information before use.  
Product link: <https://biotium.com/product/interferon-gamma-monoclonal-mouse-antibody-g-23/>

