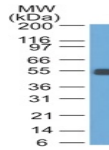


# Ep-CAM / CD326 Monoclonal Mouse Antibody (GZ-1)

This item is discontinued.



## Product Description

This item is discontinued.

## References

Tsubura A et. al. J Cut Pathol, 1992, 19:73-9. |Litvinov SV et. al. J Cell Biol, 1994, 125:437-46. |

### Product attributes

<b>Antibody number</b>	#0381
<b>Antibody reactivity (target)</b>	CD326, Ep-CAM
<b>Antibody type</b>	Primary
<b>Host species</b>	Mouse
<b>Clonality</b>	Monoclonal
<b>Clone</b>	GZ-1
<b>Isotype</b>	IgG1, kappa
<b>Molecular weight</b>	40-43 kDa
<b>Synonyms</b>	Adenocarcinoma-associated Antigen; Cell Surface Glycoprotein Trop-1; EGP2; EGP314; EGP40; Epithelial Cell Adhesion Molecule; Epithelial Glycoprotein 314; ESA; KSA; TACD1; TACSTD1; TROP1; Tumor-associated Calcium Signal Transducer 1; ECS-1; Epidermal Surface Antigen 1; ESA1; FLOT2; Flotillin-2; M17S1 (Membrane Component; Chromosome 17; Surface Marker-1); REG-1; Reggie-1; Reggie-2
<b>Entrez gene ID</b>	171577
<b>SwissProt</b>	O55159
<b>Immunogen</b>	Rat small intestine cells
<b>Antibody target cellular localization</b>	Plasma membrane
<b>Species reactivity</b>	Rat
<b>Antibody application notes</b>	For coating for ELISA, order Ab without BSA, Optimal dilution and staining procedure for a specific application should be determined by user, Recommended starting concentrations for titration are 1-2 ug/mL for most applications, or 1 ug/million cells/100 uL for flow cytometry
<b>Positive control</b>	Rat small intestine or colon. Rat colon lysate.
<b>Shipping condition</b>	Room temperature
<b>Storage Conditions</b>	Note: store BSA-free antibodies at -10 to -35°C, Store at 2 to 8 °C, Protect fluorescent conjugates from light
<b>Regulatory status</b>	For research use only (RUO)
<b>Antibody/conjugate formulation</b>	Conjugates: 0.1 mg/mL in PBS/0.1% BSA/0.05% azide, HRP conjugates: 0.1 mg/mL in PBS/0.05% BSA, Purified: 0.2 mg/mL in PBS/0.05% BSA/0.05% azide, Purified, BSA-free: 1 mg/mL in PBS without azide
<b>Shelf life</b>	Guaranteed for at least 24 months from date of receipt when stored as recommended
<b>Cell/tissue expression</b>	Epithelial cells
<b>Tumor expression</b>	Adenocarcinoma