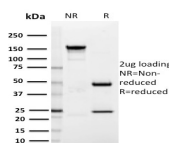


SIGLEC1 / CD169 / Sialoadhesin

Monoclonal Mouse Antibody (HSn 7D2)



Product Description

Two families of mammalian lectin-like adhesion molecules, the selectins and the sialoadhesins, bind glycoconjugate ligands in a sialic acid-dependent manner. The sialic acid-binding immunoglobulin superfamily lectins, designated siglecs or sialoadhesins, are immunoglobulin superfamily members that recognize sialylated ligands. The common sialic acids of mammalian cells are N-acetylneuraminic acid (Neu5Ac) and N-glycolylneuraminic acid (Neu5Gc). The human Siglec-1 gene maps to chromosome 20p13 and encodes a 1,709 amino acid protein, also known as CD169. Alternative splicing of the Siglec-1 gene produces a variant, encoding a type I transmembrane protein isoform that is soluble rather than membrane-bound. Studies have shown human Siglec-1 has greater affinity for Neu5Ac over Neu5Gc. Siglec-1 is a sialic acid-binding receptor that is expressed in hemopoietic cells. It mediates local cell-cell interactions in lymphoid tissues and can be detected at contact points of macrophages with other macrophages, sinus-lining cells and reticulum cells.

Primary antibodies are available purified, or with a selection of fluorescent CF® dyes and other labels. CF® dyes offer exceptional brightness and photostability. See the [CF® Dye Brochure](#) for more information. Note: Conjugates of blue fluorescent dyes like CF®405S and CF®405M are not recommended for detecting low abundance targets, because blue dyes have lower fluorescence and can give higher non-specific background than other dye colors.

Stock status: Because Biotium offers a large number of antibody and conjugation options, primary antibody conjugates may be made to order. Typical lead times are up to one week for CF® dye and biotin conjugates, and up to 2-3 weeks for fluorescent protein and enzyme conjugates. Please email order@biotium.com to inquire about stock status and lead times before placing your order.

Catalog number key for antibody number 2843, Anti-CD169|Sialoadhesin|SIGLEC1 (HSn 7D2)

Product attributes

Antibody number	#2843
Antibody reactivity (target)	CD169, Sialoadhesin, SIGLEC1
Antibody type	Primary
Host species	Mouse
Clonality	Monoclonal
Clone	HSn 7D2
Isotype	IgG1, kappa
Molecular weight	185 kDa
Synonyms	CD169; CD169 antigen; Sialic acid binding immunoglobulin like lectin 1; Sialic acid-binding Ig-like lectin 1; Sialoadhesin; Siglec-1; SN
Human gene symbol	SIGLEC1
Entrez gene ID	6614
SwissProt	Q9Z22
Unigene	31869
Immunogen	Fc fusion protein containing N-terminal 4 domains of human sialoadhesin.
Antibody target cellular localization	Plasma membrane, Secreted (extracellular)
Species reactivity	Human
Expected antibody applications	Flow, surface (published for clone), Functional studies (published for clone), IHC (FFPE) (published for clone), WB (published for clone)
Positive control	Human spleen, human peripheral blood monocytes or MCF7 cell.
Shipping condition	Room temperature
Storage Conditions	Note: store BSA-free antibodies at -10 to -35 °C, Store at 2 to 8 °C, Protect fluorescent conjugates from light
Regulatory status	For research use only (RUO)
Antibody/conjugate formulation	Conjugates: 0.1 mg/mL in PBS/0.1% BSA/0.05% azide, HRP conjugates: 0.1 mg/mL in PBS/0.05% BSA, Purified: 0.2 mg/mL in PBS/0.05% BSA/0.05% azide, Purified, BSA-free: 1 mg/mL in PBS without azide
Shelf life	Guaranteed for at least 24 months from date of receipt when stored as recommended
Product origin	Product may contain either bovine serum albumin (BSA) from bovine serum (<i>Bos taurus</i>), or recombinant BSA produced in Chinese hamster ovary cells. Inquire for the specific lot.

Antibody # prefix	Conjugation	Ex/Em (nm)	Laser line	Detection channel	Dye Features
BNC04	CF®405S	404/431	405	DAPI (microscopy), AF405	CF®405S Features
BNC88	CF®488A	490/515	488	GFP, FITC	CF®488A Features
BNC68	CF®568	562/583	532, 561	RFP, TRITC	CF®568 Features
BNC94	CF®594	593/614	561	Texas Red®	CF®594 Features
BNC40	CF®640R	642/662	633-640	Cy®5	CF®640R Features
BNC47	CF®647	650/665	633-640	Cy®5	CF®647 Features
BNC74	CF®740	742/767	633-685	775/50	CF®740 Features
BNCB	Biotin	N/A	N/A	N/A	
BNUB	Purified	N/A	N/A	N/A	
BNUM	Purified, BSA-free	N/A	N/A	N/A	

Alexa Fluor, Pacific Blue, Pacific Orange, and Texas Red are trademarks or registered trademarks of Thermo Fisher Scientific; Cy is a registered trademark of Cytiva; IRDye, LI-COR, and Odyssey are registered trademarks of LI-COR Bioscience.

References

Note: References for this clone sold by other suppliers may be listed for expected applications.

1. Cancer Sci (2013) 104(9): 1237-1244. (WB; cell ELISA; IHC, FFPE)
2. Rheumatology (2014) 53(2): 250-259. (Flow, surface; functional studies)

This datasheet was generated on April 23, 2025 at 11:53:01 PM. Visit product page to check for updated information before use. Product link: <https://biotium.com/product/siglec1-cd169-sialoadhesin-monoclonal-mouse-antibody-hsn-7d2/>