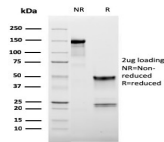


CD62L / L-Selectin Monoclonal Mouse Antibody (LAM1-116)



Product Description

Selectins, also designated CD62 antigens, comprise a family of carbohydrate-binding proteins involved in mediating cellular interactions with leukocytes. L-Selectin (also designated LECAM-1 or CD62L) is expressed on the majority of B and naive T cells and on most monocytes, neutrophils and eosinophils. L-Selectin interacts with specific carbohydrates expressed by activated endothelial cells. P-Selectin (also designated GMP-140 or CD62P), expressed on activated platelets and endothelial cells, and E-Selectin (also designated ELMA-1 or CD62E), expressed on endothelial cells, exhibit overlapping ligand specificities. Both recognize sialyl-Le (x) as a ligand and bind to specific carbohydrates on neutrophils and monocytes. Primary antibodies are available purified, or with a selection of fluorescent CF[®] dyes and other labels. CF[®] dyes offer exceptional brightness and photostability. See the [CF[®] Dye Brochure](#) for more information. Note: Conjugates of blue fluorescent dyes like CF[®]405S and CF[®]405M are not recommended for detecting low abundance targets, because blue dyes have lower fluorescence and can give higher non-specific background than other dye colors. **Stock status:** Because Biotium offers a large number of antibody and conjugation options, primary antibody conjugates may be made to order. Typical lead times are up to one week for CF[®] dye and biotin conjugates, and up to 2-3 weeks for fluorescent protein and enzyme conjugates. Please email order@biotium.com to inquire about stock status and lead times before placing your order.

References

Note: References for this clone sold by other suppliers may be listed for expected applications.

1. J Clin Invest (1997) 99(8): 2036-2044. (Flow)
2. J Clin Invest (1997) 100(5): 996-1005. (functional studies)
3. J Biol Chem (1997) 272(21): 13961-13965. (Flow, IP)
4. Ann Rheum Dis (2000) 59:297-299. (ELISA)
5. J Immunol (2002) 169:2034-2043. (ELISA)
6. Immunity (2003) 19(5): 713-724. (WB)
7. Fert Stert (2007) 88(4) Supplement: 1207-1211. (IHC, FFPE)
8. J Leukocyte Biol (2008) 83: 99-105. (Flow, IF)
- 9.

Product attributes

Antibody number	#1587
Antibody reactivity (target)	CD62L, L-Selectin
Antibody type	Primary
Host species	Mouse
Clonality	Monoclonal
Clone	LAM1-116
Isotype	IgG1, kappa
Molecular weight	65-75 kDa
Synonyms	A.11; A1528707; CD62 antigen ligand; CD62L; gp90-MEL; IgA nephropathy; susceptibility to; included; L Selectin; L-selectin; LAM1; LECAM1; LEU8; Leukocyte surface antigen Leu-8; Leukocyte surface antigen molecule 1; Lnh; LSEL; Ly-22; LYAM1; Lymph node homing receptor; Lymphocyte antigen 22; Lymphocyte surface MEL-14 antigen; Pln homing receptor; PLNHR; SELL; TQ1
Human gene symbol	SELL
Entrez gene ID	6402
SwissProt	P14151
UniGene	728756
Immunogen	MAb raised against supernatant from phorbol myristic acid activated human peripheral blood leukocytes.
Antibody target cellular localization	Plasma membrane
Species reactivity	Human
Expected antibody applications	ELISA (published for clone), Flow, surface (published for clone), Functional studies (published for clone), IHC (FFPE) (published for clone), IP (published for clone), WB (published for clone)
Antibody application notes	ELISA: For coating, order antibody without BSA; Flow cytometry: 0.5-1 ug/million cells; Western blot 0.5-1.0 ug/mL; Optimal dilution for a specific application should be determined. Higher concentration may be required for direct detection using primary antibody conjugates than for indirect detection with secondary antibody
Positive control	HPBL or Jurkat whole cell lysate.
Shipping condition	Room temperature
Storage Conditions	Note: store BSA-free antibodies at -10 to -35 °C, Store at 2 to 8 °C, Protect fluorescent conjugates from light
Regulatory status	For research use only (RUO)
Antibody/conjugate formulation	Conjugates: 0.1 mg/mL in PBS/0.1% BSA/0.05% azide, HRP conjugates: 0.1 mg/mL in PBS/0.05% BSA, Purified: 0.2 mg/mL in PBS/0.05% BSA/0.05% azide, Purified, BSA-free: 1 mg/mL in PBS without azide
Shelf life	Guaranteed for at least 24 months from date of receipt when stored as recommended
Cell/tissue expression	Eosinophils, Lymphocytes, Monocytes/macrophages, Neutrophils

Antibody # prefix	Conjugation	Ex/Em (nm)	Laser line	Detection channel
BNC04	CF [®] 405S	404/431	405	DAPI (microscopy), AF405
BNC88	CF [®] 488A	490/515	488	GFP, FITC
BNC68	CF [®] 568	562/583	532, 561	RFP, TRITC
BNC94	CF [®] 594	593/614	561	Texas Red [®]
BNC40	CF [®] 640R	642/662	633-640	Cy [®] 5
BNC47	CF [®] 647	650/665	633-640	Cy [®] 5
BNCB	Biotin	N/A	N/A	N/A
BNUB	Purified	N/A	N/A	N/A
BNUM	Purified, BSA-free	N/A	N/A	N/A

Dye Features
CF[®]405S Features
CF[®]488A Features
CF[®]568 Features
CF[®]594 Features
CF[®]640R Features
CF[®]647 Features

Alexa Fluor, Pacific Blue, Pacific Orange, and Texas Red are trademarks or registered trademarks of Thermo Fisher Scientific; Cy is a registered trademark of Cytiva; IRDye, LI-COR, LI-COR Bioscience.