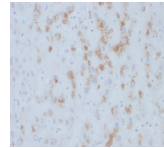


# Cytochrome p450 Monoclonal Mouse Antibody (M12P4H2)



## Product Description

This gene encodes a member of the cytochrome P450 superfamily of enzymes. The cytochrome P450 proteins are monooxygenases, which catalyze many reactions involved in drug metabolism and synthesis of cholesterol, steroids and other lipids. This protein localizes to the endoplasmic reticulum and is induced by ethanol, the diabetic state, and starvation. The enzyme metabolizes both endogenous substrates, such as ethanol, acetone, and acetal, as well as exogenous substrates including benzene, carbon tetrachloride, ethylene glycol, and nitrosamines, which are pre-mutagens found in cigarette smoke. Due to its many substrates, this enzyme may be involved in such varied processes as gluconeogenesis, hepatic cirrhosis, diabetes, and cancer. Primary antibodies are available purified, or with a selection of fluorescent CF® dyes and other labels. CF® dyes offer exceptional brightness and photostability. See the [CF® Dye Brochure](#) for more information. Note: Conjugates of blue fluorescent dyes like CF®405S and CF®405M are not recommended for detecting low abundance targets, because blue dyes have lower fluorescence and can give higher non-specific background than other dye colors. **Stock status:** Because Biotium offers a large number of antibody and conjugation options, primary antibody conjugates may be made to order. Typical lead times are up to one week for CF® dye and biotin conjugates, and up to 2-3 weeks for fluorescent protein and enzyme conjugates. Please email [order@biotium.com](mailto:order@biotium.com) to inquire about stock status and lead times before placing your order.

## Product attributes

Antibody number	#2199
Antibody reactivity (target)	Cytochrome p450
Antibody type	Primary
Host species	Mouse
Clonality	Monoclonal
Clone	M12P4H2
Isotype	IgG1, kappa
Molecular weight	~50-55 kDa
Synonyms	4-nitrophenol 2-hydroxylase; CPE1; CYP2Ecytochrome P450 2E1; CYP11E1; cytochrome P450; family 2; subfamily E; polypeptide 1; cytochrome P450; subfamily IIE (ethanol-inducible); polypeptide 1 ; Cytochrome P450-J; EC 1.14.13; EC 1.14.13.n7; EC 1.14.14.1; flavoprotein-linked monooxygenase; microsomal monooxygenase; P450C2E; P450-J; xenobiotic monooxygenase
Human gene symbol	CYP2E1
Entrez gene ID	1571
SwissProt	P05181
Unigene	12907
Immunogen	Ovalbumin-conjugated synthetic peptide HIGFGIPPR (C-terminal sequence)
Verified antibody	IHC (FFPE) (verified)
Antibody target cellular localization	Endoplasmic reticulum, Microsomes
Species reactivity	Human
Positive control	HepG2 cells. Liver.
Shipping condition	Room temperature
Storage Conditions	Note: store BSA-free antibodies at -10 to -35°C, Store at 2 to 8 °C, Protect fluorescent conjugates from light
Regulatory status	For research use only (RUO)
Antibody/conjugate formulation	Conjugates: 0.1 mg/mL in PBS/0.1% BSA/0.05% azide, HRP conjugates: 0.1 mg/mL in PBS/0.05% BSA, Purified: 0.2 mg/mL in PBS/0.05% BSA/0.05% azide, Purified, BSA-free: 1 mg/mL in PBS without azide
Shelf life	Guaranteed for at least 24 months from date of receipt when stored as recommended

Antibody # prefix	Conjugation	Ex/Em (nm)	Laser line	Detection channel	Dye Features
BNC04	CF®405S	404/431	405	DAPI (microscopy), AF405	<a href="#">CF®405S Features</a>
BNC88	CF®488A	490/515	488	GFP, FITC	<a href="#">CF®488A Features</a>
BNC68	CF®568	562/583	532, 561	RFP, TRITC	<a href="#">CF®568 Features</a>
BNC94	CF®594	593/614	561	Texas Red®	<a href="#">CF®594 Features</a>
BNC40	CF®640R	642/662	633-640	Cy®5	<a href="#">CF®640R Features</a>
BNC47	CF®647	650/665	633-640	Cy®5	<a href="#">CF®647 Features</a>
BNCB	Biotin	N/A	N/A	N/A	
BNUB	Purified	N/A	N/A	N/A	
BNUM	Purified, BSA-free	N/A	N/A	N/A	

Alexa Fluor, Pacific Blue, Pacific Orange, and Texas Red are trademarks or registered trademarks of Thermo Fisher Scientific; Cy is a registered trademark of Cytiva; IRDye, LI-COR, LI-COR Bioscience.