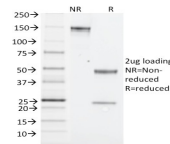


NK1.1 / CD161c / Klrb1c, Mouse Monoclonal Mouse Antibody (PK136)



Product Description

NK1.1 is a type II integral membrane glycoprotein with a C-type lectin domain and is encoded by the Klrb1c/NKR-P1C gene. It is predominantly expressed as a disulfide-linked homodimer on NK cells however; it is also expressed on NK-T cells, a rare population of T lymphocytes. NK1.1 is expressed in some mouse strains, including C57BL/6, FVB/N, and NZB, but not AKR, BALB/c, CBA/J, C3H, DBA/1, DBA/2, NOD, SJL, and 129. Expression of NKR-P1C antigen has been correlated with lysis of tumor cells in vitro and rejection of bone marrow allografts in vivo. NK-1.1 has also been shown to play a role in NK cell activation, IFN- γ production, and cytotoxic granule release. NK-1.1 is commonly used as a mouse NK cell marker.

Primary antibodies are available purified, or with a selection of fluorescent CF[®] dyes and other labels. CF[®] dyes offer exceptional brightness and photostability. See the [CF[®] Dye Brochure](#) for more information. Note: Conjugates of blue fluorescent dyes like CF[®]405S and CF[®]405M are not recommended for detecting low abundance targets, because blue dyes have lower fluorescence and can give higher non-specific background than other dye colors.

Stock status: Because Biotium offers a large number of antibody and conjugation options, primary antibody conjugates may be made to order. Typical lead times are up to one week for CF[®] dye and biotin conjugates, and up to 2-3 weeks for fluorescent protein and enzyme conjugates. Please email order@biotium.com to inquire about stock status and lead times before placing your order.

References

Note: References for this clone sold by other suppliers may be listed for expected applications.

J Exp Med (1993) 178: 223-229. (functional studies; Flow, surface)

Product attributes

Antibody number	#2010
Antibody reactivity (target)	CD161c, Klrb1c, NK1.1
Antibody type	Primary
Host species	Mouse
Clonality	Monoclonal
Clone	PK136
Isotype	IgG2a, kappa
Molecular weight	kDa
Synonyms	CD161 antigen-like family member C; CD161c; Killer cell lectin-like receptor subfamily B member 1C (Klrb1c); Klrb1f; Lymphocyte antigen 55c (Ly55c); Lymphocyte antigen 59; Natural killer cell surface protein P1-40; NK1.1; NKR-P1 40; NKR-P1.9; NKR-P1C; NKRP1
Human gene symbol	Klrb1c (Mouse)
Entrez gene ID	17059
SwissProt	P27814
Unigene	480764
Immunogen	CD Mouse spleen and bone marrow cells enriched for NK-1+ cells
Antibody target cellular	Plasma membrane
Species reactivity	Mouse
Expected antibody applications	Flow, surface (published for clone), Functional studies (published for clone)
Positive control	MPBMC's or Thymus or Lymph Node.
Shipping condition	Room temperature
Storage Conditions	Note: store BSA-free antibodies at -10 to -35 °C, Store at 2 to 8 °C, Protect fluorescent conjugates from light
Regulatory status	For research use only (RUO)
Antibody/conjugate formulation	Conjugates: 0.1 mg/mL in PBS/0.1% BSA/0.05% azide, HRP conjugates: 0.1 mg/mL in PBS/0.05% BSA, Purified: 0.2 mg/mL in PBS/0.05% BSA/0.05% azide, Purified, BSA-free: 1 mg/mL in PBS without azide
Shelf life	Guaranteed for at least 24 months from date of receipt when stored as recommended
Cell/tissue expression	NK cells

Antibody # prefix	Conjugation	Ex/Em (nm)	Laser line	Detection channel	Dye Features
BNC04	CF@405S	404/431	405	DAPI (microscopy), AF405	CF@405S Features
BNC88	CF@488A	490/515	488	GFP, FITC	CF@488A Features
BNC68	CF@568	562/583	532, 561	RFP, TRITC	CF@568 Features
BNC94	CF@594	593/614	561	Texas Red [®]	CF@594 Features
BNC40	CF@640R	642/662	633-640	Cy@5	CF@640R Features
BNC47	CF@647	650/665	633-640	Cy@5	CF@647 Features
BNCB	Biotin	N/A	N/A	N/A	
BNUB	Purified	N/A	N/A	N/A	
BNUM	Purified, BSA-free	N/A	N/A	N/A	

Alexa Fluor, Pacific Blue, Pacific Orange, and Texas Red are trademarks or registered trademarks of Thermo Fisher Scientific; Cy is a registered trademark of Cytiva; IRDye, LI-COR, of LI-COR Bioscience.