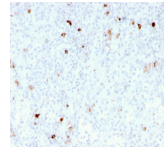


Human IgM Immunoglobulin Recombinant Monoclonal Mouse Antibody (rIM260)



Product Description

Recognizes a protein of 75 kDa, identified as mu heavy chain of human immunoglobulins. It does not cross-react with alpha (IgA), gamma (IgG), epsilon (IgE), or delta (IgD), heavy chains, T-cells, monocytes, granulocytes, or erythrocytes. This MAb is useful in the identification of leukemias, plasmacytomas, and certain non-Hodgkin's lymphomas. The most common feature of these malignancies is the restricted expression of a single heavy chain class. Demonstration of clonality in lymphoid infiltrates indicates that the infiltrate is clonal and therefore malignant. Primary antibodies are available purified, or with a selection of fluorescent CF® dyes and other labels. CF® dyes offer exceptional brightness and photostability. See the [CF® Dye Brochure](#) for more information. Note: Conjugates of blue fluorescent dyes like CF®405S and CF®405M are not recommended for detecting low abundance targets, because blue dyes have lower fluorescence and can give higher non-specific background than other dye colors.

Stock status: Because Biotium offers a large number of antibody and conjugation options, primary antibody conjugates may be made to order. Typical lead times are up to one week for CF® dye and biotin conjugates, and up to 2-3 weeks for fluorescent protein and enzyme conjugates. Please email order@biotium.com to inquire about stock status and lead times before placing your order.

Product attributes

Antibody number	#3775
Antibody reactivity (target)	IgM Mu Heavy Chain
Antibody type	Primary, Anti-Human Immunoglobulin
Host species	Mouse
Clonality	Recombinant Monoclonal
Clone	rIM260
Isotype	IgG1, kappa
Molecular weight	50-75 kDa
Synonyms	AGM1; IGHM; Constant Region of Heavy Chain of IgM; Ig Mu Chain C Region
Human gene symbol	IGHM
Entrez gene ID	3507
SwissProt	P01871 & P20769
UniGene	510635
Immunogen	Recombinant full-length human IGHM protein
Verified antibody applications	IHC (FFPE) (verified)
Antibody target cellular localization	Plasma membrane, Secreted (extracellular)
Species reactivity	Human
Positive control	293T, Raji or hPBL cells. Human tonsil or spleen (IHC).
Shipping condition	Room temperature
Storage Conditions	Note: store BSA-free antibodies at -10 to -35°C. Store at 2 to 8 °C. Protect fluorescent conjugates from light
Regulatory status	For research use only (RUO)
Antibody/conjugate formulation	Conjugates: 0.1 mg/mL in PBS/0.1% BSA/0.05% azide, HRP conjugates: 0.1 mg/mL in PBS/0.05% BSA, Purified: 0.2 mg/mL in PBS/0.05% BSA/0.05% azide, Purified, BSA-free: 1 mg/mL in PBS without azide
Shelf life	Guaranteed for at least 24 months from date of receipt when stored as recommended
Cell/tissue expression	B-cells
Antibody research areas	Cancer, Immunology, Inflammation
Tumor expression	Leukemia/lymphoma

Antibody # prefix	Conjugation	Ex/Em (nm)	Laser line	Detection channel	Dye Features
BNC04	CF®405S	404/431	405	DAPI (microscopy), AF405	CF®405S Features
BNC88	CF®488A	490/515	488	GFP, FITC	CF®488A Features
BNC68	CF®568	562/583	532, 561	RFP, TRITC	CF®568 Features
BNC94	CF®594	593/614	561	Texas Red®	CF®594 Features
BNC40	CF®640R	642/662	633-640	Cy®5	CF®640R Features
BNC47	CF®647	650/665	633-640	Cy®5	CF®647 Features
BNCB	Biotin	N/A	N/A	N/A	
BNUB	Purified	N/A	N/A	N/A	
BNUM	Purified, BSA-free	N/A	N/A	N/A	

Alexa Fluor, Pacific Blue, Pacific Orange, and Texas Red are trademarks or registered trademarks of Thermo Fisher Scientific; Cy is a registered trademark of Cytiva; IRDye, LI-COR, LI-COR Bioscience.

This datasheet was generated on July 17, 2024 at 11:45:55 AM. Visit product page to check for updated information before use. Product link: <https://biotium.com/product/human-igm-immunoglobulin-recombinant-mouse-antibody-rim260/>