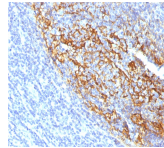


CD35 / CR1 Monoclonal Mouse Antibody (To5)



Product Description

Recognizes a protein of 210-220 kDa, which is identified as the complement receptor 1 (CR1)/CD35. This MAb does not block CR1 activity. It is highly specific to CR1 and shows no cross-reaction with CR2. The primary function of CR1 is to serve as the cellular receptor for C3b and C4b, the most important components of the complement system leading to clearance of foreign macromolecules. The Knops blood group system is a system of antigens located on this protein. Follicular dendritic cells (FDC) are restricted to the B-cell regions of secondary lymphoid follicles. They are CD21 /CD35 /CD1a⁻. This MAb labels follicular dendritic cells and follicular dendritic cell sarcoma. Primary antibodies are available purified, or with a selection of fluorescent CF[®] dyes and other labels. CF[®] dyes offer exceptional brightness and photostability. See the [CF[®] Dye Brochure](#) for more information. Note: Conjugates of blue fluorescent dyes like CF[®]405S and CF[®]405M are not recommended for detecting low abundance targets, because blue dyes have lower fluorescence and can give higher non-specific background than other dye colors. **Stock status:** Because Biotium offers a large number of antibody and conjugation options, primary antibody conjugates may be made to order. Typical lead times are up to one week for CF[®] dye and biotin conjugates, and up to 2-3 weeks for fluorescent protein and enzyme conjugates. Please email order@biotium.com to inquire about stock status and lead times before placing your order.

Product attributes

Antibody number	#1318
Antibody reactivity (target)	CD35, CR1
Antibody type	Primary
Host species	Mouse
Clonality	Monoclonal
Clone	To5
Isotype	IgG1, kappa
Molecular weight	210-220 kDa
Synonyms	C3 binding protein, C3b/C4b receptor, C3BR, C4BR, Complement Component (3b/4b) receptor 1 including Knops blood group system, Complement receptor type 1, KN, Knops blood group antigen
Human gene symbol	CR1
Entrez gene ID	1378
SwissProt	P17927
Unigene	334019
Immunogen	Recombinant human CR1 protein
Verified antibody applications	IHC (FFPE) (verified)
Antibody target cellular localization	Plasma membrane
Species reactivity	Human
Positive control	Follicular dendritic cells (FDC) in tonsil
Shipping condition	Room temperature
Storage Conditions	Note: store BSA-free antibodies at -10 to -35°C, Store at 2 to 8 °C, Protect fluorescent conjugates from light
Regulatory status	For research use only (RUO)
Antibody/conjugate formulation	Conjugates: 0.1 mg/mL in PBS/0.1% BSA/0.05% azide, HRP conjugates: 0.1 mg/mL in PBS/0.05% BSA, Purified: 0.2 mg/mL in PBS/0.05% BSA/0.05% azide, Purified, BSA-free: 1 mg/mL in PBS without azide
Shelf life	Guaranteed for at least 24 months from date of receipt when stored as recommended
Cell/tissue expression	Antigen presenting cells

Antibody # prefix	Conjugation	Ex/Em (nm)	Laser line	Detection channel	Dye Features
BNC04	CF@405S	404/431	405	DAPI (microscopy), AF405	CF@405S Features
BNC88	CF@488A	490/515	488	GFP, FITC	CF@488A Features
BNC68	CF@568	562/583	532, 561	RFP, TRITC	CF@568 Features
BNC94	CF@594	593/614	561	Texas Red [®]	CF@594 Features
BNC40	CF@640R	642/662	633-640	Cy@5	CF@640R Features
BNC47	CF@647	650/665	633-640	Cy@5	CF@647 Features
BNCB	Biotin	N/A	N/A	N/A	
BNUB	Purified	N/A	N/A	N/A	
BNUM	Purified, BSA-free	N/A	N/A	N/A	

Alexa Fluor, Pacific Blue, Pacific Orange, and Texas Red are trademarks or registered trademarks of Thermo Fisher Scientific; Cy is a registered trademark of Cytiva; IRDye, LI-COR, LI-COR Bioscience.