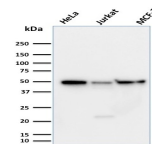


# Cyclin A1 Monoclonal Mouse Antibody (XLA1-3)



## Product Description

The critical role that the family of regulatory proteins known as cyclins play in eukaryotic cell cycle regulation is well established. The best-characterized cyclin complex is the mitotic cyclin B/Cdc2 p34 kinase, the active component of maturing promoting factor. Cyclin A accumulates prior to cyclin B in the cell cycle, appears to be involved in control of S phase and has been shown to associate with cyclin-dependent kinase-2 (Cdk2). In addition, cyclin A has been implicated in cell transformation and is found in complexes with E1A, transcription factors DRTF1 and E2F, and retinoblastoma protein p110. A second form of cyclin A, named cyclin A1 because of its high sequence homology to Xenopus cyclin A1, is most highly expressed in germ cells. It has been proposed that cyclin A1 can associate with Cdk2, p39 and Cdc2 p34. The antibody detects Xenopus cyclin A in blots. Cyclin A1 is the embryonic cyclin which is present in Xenopus eggs. This MAb only detects Xenopus Cyclin A1. Primary antibodies are available purified, or with a selection of fluorescent CF® dyes and other labels. CF® dyes offer exceptional brightness and photostability. See the [CF® Dye Brochure](#) for more information. Note: Conjugates of blue fluorescent dyes like CF®405S and CF®405M are not recommended for detecting low abundance targets, because blue dyes have lower fluorescence and can give higher non-specific background than other dye colors. **Stock status:** Because Biotium offers a large number of antibody and conjugation options, primary antibody conjugates may be made to order. Typical lead times are up to one week for CF® dye and biotin conjugates, and up to 2-3 weeks for fluorescent protein and enzyme conjugates. Please email [order@biotium.com](mailto:order@biotium.com) to inquire about stock status and lead times before placing your order.

Product attributes	
Antibody number	#3049
Antibody reactivity (target)	Cyclin A1
Antibody type	Primary
Host species	Mouse
Clonality	Monoclonal
Clone	XLA1-3
Isotype	IgG1, kappa
Molecular weight	65 kDa
Synonyms	CCN1; CCNA; CCNA2; Cyclin A1
Human gene symbol	ccna1
Entrez gene ID	Not Known
SwissProt	P18606
Unigene	4267
Immunogen	Recombinant full-length Xenopus laevis Cyclin A1 protein
Verified antibody applications	WB (verified)
Antibody target cellular localization	Nucleus
Species reactivity	Xenopus laevis
Antibody application notes	Western blot 1-2 ug/mL; Optimal dilution for a specific application should be determined.
Positive control	Very high levels in testis. Also found in myeloid leukemia cell lines. Xenopus laevis tissue lysate.
Shipping condition	Room temperature
Storage Conditions	Note: store BSA-free antibodies at -10 to -35 °C. Store at 2 to 8 °C. Protect fluorescent conjugates from light
Regulatory status	For research use only (RUO)
Antibody/conjugate formulation	Conjugates: 0.1 mg/mL in PBS/0.1% BSA/0.05% azide, HRP conjugates: 0.1 mg/mL in PBS/0.05% BSA. Purified: 0.2 mg/mL in PBS/0.05% BSA/0.05% azide, Purified, BSA-free: 1 mg/mL in PBS without azide
Shelf life	Guaranteed for at least 24 months from date of receipt when stored as recommended

Antibody # prefix	Conjugation	Ex/Em (nm)	Laser line	Detection channel
BNC04	CF®405S	404/431	405	DAPI (microscopy), AF405
BNC88	CF®488A	490/515	488	GFP, FITC
BNC68	CF®568	562/583	532, 561	RFP, TRITC
BNC94	CF®594	593/614	561	Texas Red®
BNC40	CF®640R	642/662	633-640	Cy®5
BNC47	CF®647	650/665	633-640	Cy®5
BNCB	Biotin	N/A	N/A	N/A
BNUB	Purified	N/A	N/A	N/A
BNUM	Purified, BSA-free	N/A	N/A	N/A

- Dye Features**
- [CF®405S Features](#)
  - [CF®488A Features](#)
  - [CF®568 Features](#)
  - [CF®594 Features](#)
  - [CF®640R Features](#)
  - [CF®647 Features](#)

Alexa Fluor, Pacific Blue, Pacific Orange, and Texas Red are trademarks or registered trademarks of Thermo Fisher Scientific; Cy is a registered trademark of Cytiva; IRDye, LI-COR, LI-COR Bioscience.