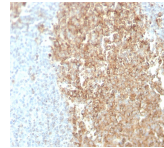


CDw75 Monoclonal Mouse Antibody (ZB55)



Product Description

Recognizes a neuraminidase-sensitive sialoprotein (CDw75), present on cell membrane and cytoplasm of germinal center B-cells and derived lymphomas. This MAb reacts with RBC precursors of bone marrow, ductal and ciliated epithelial cells of kidney, breast, prostate, pancreas, lung, and with glioblastomas, astrocytomas, and Reed Sternberg cells in lymphocyte predominant Hodgkin's disease. It is shown to be a helpful antibody for ascribing a B-cell phenotype in known lymphoid tissues. Primary antibodies are available purified, or with a selection of fluorescent CF® dyes and other labels. CF® dyes offer exceptional brightness and photostability. See the [CF® Dye Brochure](#) for more information. Note: Conjugates of blue fluorescent dyes like CF®405S and CF®405M are not recommended for detecting low abundance targets, because blue dyes have lower fluorescence and can give higher non-specific background than other dye colors. **Stock status:** Because Biotium offers a large number of antibody and conjugation options, primary antibody conjugates may be made to order. Typical lead times are up to one week for CF® dye and biotin conjugates, and up to 2-3 weeks for fluorescent protein and enzyme conjugates. Please email order@biotium.com to inquire about stock status and lead times before placing your order.

Product attributes

Antibody number	#2740
Antibody reactivity (target)	CDw75
Antibody type	Primary
Host species	Mouse
Clonality	Monoclonal
Clone	ZB55
Isotype	IgM, kappa
Molecular weight	46 kDa
Synonyms	6-sialyltransferase 1 (6-ST1); Alpha 2,6 ST1; Beta galactoside alpha 2,6 sialyltransferase 1; CMP N acetylneuraminate beta galactosamide alpha 2,6 sialyltransferase 1; CMP-N-acetylneuraminate-beta-galactosamide-SIAT1; ST6 beta galactosamide alpha 2,6 sialyltransferase 1; ST6Gal I; ST6N
Human gene symbol	ST6GAL1
Entrez gene ID	6480
SwissProt	P15907
Unigene	207459
Immunogen	CD32 peptides
Verified antibody applications	IHC (FFPE) (verified)
Antibody target cellular localization	Plasma membrane
Species reactivity	Human
Positive control	HeLa or Daudi cells (IF/FACS). Germinal center B- cells in a lymph node or tonsil (IHC). Use LN1 s ability to stain surface of erythrocytes as an internal positive control.
Shipping condition	Room temperature
Storage Conditions	Note: store BSA-free antibodies at -10 to -35°C, Store at 2 to 8 °C, Protect fluorescent conjugates from light
Regulatory status	For research use only (RUO)
Antibody/conjugate formulation	Conjugates: 0.1 mg/mL in PBS/0.1% BSA/0.05% azide, HRP conjugates: 0.1 mg/mL in PBS/0.05% BSA, Purified: 0.2 mg/mL in PBS/0.05% BSA/0.05% azide, Purified, BSA-free: 1 mg/mL in PBS without azide
Shelf life	Guaranteed for at least 24 months from date of receipt when stored as recommended
Cell/tissue expression	B-cells, Epithelial cells, Erythrocyte precursors
Tumor expression	Glioma, Leukemia/lymphoma

Antibody # prefix	Conjugation	Ex/Em (nm)	Laser line	Detection channel
BNC04	CF®405S	404/431	405	DAPI (microscopy), AF405
BNC88	CF®488A	490/515	488	GFP, FITC
BNC68	CF®568	562/583	532, 561	RFP, TRITC
BNC94	CF®594	593/614	561	Texas Red®
BNC40	CF®640R	642/662	633-640	Cy®5
BNC47	CF®647	650/665	633-640	Cy®5
BNCB	Biotin	N/A	N/A	N/A
BNUB	Purified	N/A	N/A	N/A
BNUM	Purified, BSA-free	N/A	N/A	N/A

Dye Features

- [CF®405S Features](#)
- [CF®488A Features](#)
- [CF®568 Features](#)
- [CF®594 Features](#)
- [CF®640R Features](#)
- [CF®647 Features](#)

Alexa Fluor, Pacific Blue, Pacific Orange, and Texas Red are trademarks or registered trademarks of Thermo Fisher Scientific; Cy is a registered trademark of Cytiva; IRDye, LI-COR, LI-COR Bioscience.