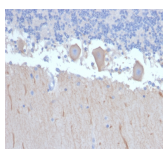


Autophagy Protein 5 (ATG5) Monoclonal Mouse Antibody (ATG5/2492)



Product Description

Autophagy protein 5 (ATG5), in combination with autophagy protein 12, functions as an E1-like activating enzyme in a ubiquitin-like conjugating system. ATG5 is involved in several cellular processes, including autophagic vesicle formation, mitochondrial quality control after oxidative damage, negative regulation of the innate antiviral immune response, lymphocyte development and proliferation, MHC II antigen presentation, adipocyte differentiation, and apoptosis. The ATG5 protein is essential for autophagy; a process that is usually beneficial for cells to self-degrade their own components when they are no longer useful.

Primary antibodies are available purified, or with a selection of fluorescent CF® dyes and other labels. CF® dyes offer exceptional brightness and photostability. See the [CF® Dye Brochure](#) for more information. Note: Conjugates of blue fluorescent dyes like CF®405S and CF®405M are not recommended for detecting low abundance targets, because blue dyes have lower fluorescence and can give higher non-specific background than other dye colors.

Stock status: Because Biotium offers a large number of antibody and conjugation options, primary antibody conjugates may be made to order. Typical lead times are up to one week for CF® dye and biotin conjugates, and up to 2-3 weeks for fluorescent protein and enzyme conjugates. Please email order@biotium.com to inquire about stock status and lead times before placing your order.

Catalog number key for antibody number 2492, ATG5 Monoclonal Mouse Antibody (ATG5/2492)

Product attributes

| | |
|---------------------------------------|---|
| Antibody number | #2492 |
| research-areas | Membrane trafficking, Metabolism |
| Antibody reactivity (target) | ATG5, Autophagy protein 5 |
| Antibody type | Primary |
| Host species | Mouse |
| Clonality | Monoclonal |
| Clone | ATG5/2492 |
| Isotype | IgG1, kappa |
| Molecular weight | 50-32 kDa |
| Synonyms | Autophagy protein 5; ATG5; Autophagy related 5; APG5-like; Apoptosis-specific protein |
| Human gene symbol | ATG5 |
| Entrez gene ID | 9474 |
| SwissProt | Q9H1Y0 |
| Unigene | 486063 |
| Immunogen | Recombinant fragment of human ATG5 protein (around aa 1-119) (exact sequence is proprietary) |
| Verified antibody applications | IHC (FFPE) (verified), WB (verified) |
| Antibody target cellular localization | Cytoplasmic |
| Species reactivity | Human |
| Positive control | THP1, PANC-1, Raji or HeLa cells. Brain, Ovary, Endometrium, Colon or Duodenum (IHC). |
| Shipping condition | Room temperature |
| Storage Conditions | Store at 2 to 8 °C, Protect fluorescent conjugates from light, Note: store BSA-free antibodies at -10 to -35 °C |
| Regulatory status | For research use only (RUO) |
| Antibody/conjugate formulation | Conjugates: 0.1 mg/mL in PBS/0.1% BSA/0.05% azide, HRP conjugates: 0.1 mg/mL in PBS/0.05% BSA, Purified: 0.2 mg/mL in PBS/0.05% BSA/0.05% azide, Purified, BSA-free: 1 mg/mL in PBS without azide |
| Shelf life | Guaranteed for at least 24 months from date of receipt when stored as recommended |
| Product origin | Product may contain either bovine serum albumin (BSA) from bovine serum (<i>Bos taurus</i>), or recombinant BSA produced in Chinese hamster ovary cells. Inquire for the specific lot. |

| Antibody # prefix | Conjugation | Ex/Em (nm) | Laser line | Detection channel | Dye Features |
|-------------------|--------------------|------------|------------|--------------------------|----------------------------------|
| BNC04 | CF®405S | 404/431 | 405 | DAPI (microscopy), AF405 | CF®405S Features |
| BNC88 | CF®488A | 490/515 | 488 | GFP, FITC | CF®488A Features |
| BNC68 | CF®568 | 562/583 | 532, 561 | RFP, TRITC | CF®568 Features |
| BNC94 | CF®594 | 593/614 | 561 | Texas Red® | CF®594 Features |
| BNC40 | CF®640R | 642/662 | 633-640 | Cy®5 | CF®640R Features |
| BNC47 | CF®647 | 650/665 | 633-640 | Cy®5 | CF®647 Features |
| BNC74 | CF®740 | 742/767 | 633-685 | 775/50 | CF®740 Features |
| BNCB | Biotin | N/A | N/A | N/A | |
| BNUB | Purified | N/A | N/A | N/A | |
| BNUM | Purified, BSA-free | N/A | N/A | N/A | |

Alexa Fluor, Pacific Blue, Pacific Orange, and Texas Red are trademarks or registered trademarks of Thermo Fisher Scientific; Cy is a registered trademark of Cytiva; IRDye, LI-COR, and Odyssey are registered trademarks of LI-COR Bioscience.

This datasheet was generated on April 12, 2025 at 09:54:39 AM. Visit product page to check for updated information before use. Product link: <https://biotium.com/product/atg5-monoclonal-mouse-antibody-atg5-2492/>