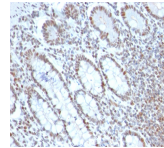


BMI1 Monoclonal Mouse Antibody (BMI1/2690)



Product Description

The B cell-specific moloney murine leukemia virus integration site 1 (Bmi-1) is a transcriptional receptor of the polycomb gene family involved in several cellular processes including cell-cycle regulation, apoptosis, and maintenance of adult and neoplastic stem cells by providing self-renewal capacity. Further, Bmi-1 expression has been associated with malignant transformation, tumor progression, metastatic disease, and poor prognosis in human malignancies. Primary antibodies are available purified, or with a selection of fluorescent CF® dyes and other labels. CF® dyes offer exceptional brightness and photostability. See the [CF® Dye Brochure](#) for more information. Note: Conjugates of blue fluorescent dyes like CF®405S and CF®405M are not recommended for detecting low abundance targets, because blue dyes have lower fluorescence and can give higher non-specific background than other dye colors. **Stock status:** Because Biotium offers a large number of antibody and conjugation options, primary antibody conjugates may be made to order. Typical lead times are up to one week for CF® dye and biotin conjugates, and up to 2-3 weeks for fluorescent protein and enzyme conjugates. Please email order@biotium.com to inquire about stock status and lead times before placing your order.

Product attributes

| | |
|---------------------------------------|---|
| Antibody number | #2690 |
| Antibody reactivity (target) | BMI1 |
| Antibody type | Primary |
| Host species | Mouse |
| Clonality | Monoclonal |
| Clone | BMI1/2690 |
| Isotype | IgG2a, kappa |
| Molecular weight | ~41 kDa |
| Synonyms | BMI1; Polycomb complex protein BMI1; B lymphoma Mo MLV insertion region 1 homolog; BMI1 polycomb ring finger oncogene; Polycomb group ring finger 4; RING finger protein 51 |
| Human gene symbol | BMI1 |
| Entrez gene ID | 648 |
| SwissProt | P35226 |
| Unigene | 380403 |
| Immunogen | Recombinant fragment (around aa 142-326) of human BMI1 protein (exact sequence is proprietary) |
| Verified antibody applications | IHC (FFPE) (verified) |
| Antibody target cellular localization | Cytoplasmic, Nucleus |
| Species reactivity | Human |
| Positive control | HeLa or Jurkat cells. Colon Carcinoma. |
| Shipping condition | Room temperature |
| Storage Conditions | Store at 2 to 8 °C, Protect fluorescent conjugates from light, Note: store BSA-free antibodies at -10 to -35 °C |
| Regulatory status | For research use only (RUO) |
| Antibody/conjugate formulation | Conjugates: 0.1 mg/mL in PBS/0.1% BSA/0.05% azide, HRP conjugates: 0.1 mg/mL in PBS/0.05% BSA, Purified: 0.2 mg/mL in PBS/0.05% BSA/0.05% azide, Purified, BSA-free: 1 mg/mL in PBS without azide |
| Validated in protein array | Monospecific |
| Shelf life | Guaranteed for at least 24 months from date of receipt when stored as recommended |
| Antibody research areas | Cancer, Developmental biology |

| Antibody # prefix | Conjugation | Ex/Em (nm) | Laser line | Detection channel | Dye Features |
|-------------------|--------------------|------------|------------|--------------------------|----------------------------------|
| BNC04 | CF®405S | 404/431 | 405 | DAPI (microscopy), AF405 | CF®405S Features |
| BNC88 | CF®488A | 490/515 | 488 | GFP, FITC | CF®488A Features |
| BNC68 | CF®568 | 562/583 | 532, 561 | RFP, TRITC | CF®568 Features |
| BNC94 | CF®594 | 593/614 | 561 | Texas Red® | CF®594 Features |
| BNC40 | CF®640R | 642/662 | 633-640 | Cy®5 | CF®640R Features |
| BNC47 | CF®647 | 650/665 | 633-640 | Cy®5 | CF®647 Features |
| BNCB | Biotin | N/A | N/A | N/A | |
| BNUB | Purified | N/A | N/A | N/A | |
| BNUM | Purified, BSA-free | N/A | N/A | N/A | |

Alexa Fluor, Pacific Blue, Pacific Orange, and Texas Red are trademarks or registered trademarks of Thermo Fisher Scientific; Cy is a registered trademark of Cytiva; IRDye, LI-COR, LI-COR Bioscience.