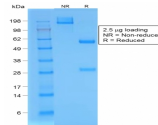


BrdU Recombinant Monoclonal Rabbit Antibody (BRD/1539R)



Product Description

Bromodeoxyuridine (BrdU) is a synthetic nucleoside thymidine analog. It is commonly used to detect proliferation in cells. In cells cultured in the presence of BrdU, BrdU will incorporate into newly synthesized DNA during S-phase. Antibodies specific for BrdU can then be used to detect replicated DNA. This antibody is available purified, with BSA (0.2 mg/mL) or purified, BSA-free (1 mg/mL).

Product attributes

Antibody number	#1539
Antibody reactivity (target)	BrdU
Antibody type	Primary
Host species	Rabbit
Clonality	Recombinant Monoclonal
Clone	BRD/1539R
Isotype	IgG
Molecular weight	307Da
Synonyms	Bromodeoxyuridine; 5-bromo-2-deoxyuridine
Human gene symbol	Not Applicable
Entrez gene ID	Not Applicable
SwissProt	Not Applicable
Unigene	Not Applicable
Immunogen	Bromodeoxyuridine (BrdU) conjugated to KLH
Antibody target cellular localization	Nucleus
Species reactivity	All species
Antibody application notes	For coating for ELISA, order Ab without BSA, Optimal dilution and staining procedure for a specific application should be determined by user, Recommended starting concentrations for titration are 1-2 ug/mL for most applications, or 1 ug/million cells/100 uL for flow cytometry
Positive control	Cells grown in presence of BrdU or tissues from experimental animals injected with BrdU
Shipping condition	Room temperature
Storage Conditions	Store at 2 to 8 °C, Protect fluorescent conjugates from light, Note: store BSA-free antibodies at -10 to -35 °C
Regulatory status	For research use only (RUO)
Antibody/conjugate formulation	Conjugates: 0.1 mg/mL in PBS/0.1% BSA/0.05% azide, HRP conjugates: 0.1 mg/mL in PBS/0.05% BSA, Purified: 0.2 mg/mL in PBS/0.05% BSA/0.05% azide, Purified, BSA-free: 1 mg/mL in PBS without azide
Shelf life	Guaranteed for at least 24 months from date of receipt when stored as recommended
Antibody research areas	Cancer, Cell cycle