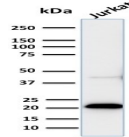


CD3e Recombinant Monoclonal Rabbit Antibody (C3e/2858R)



Product Description

The immunogen for this Mab is derived from the extracellular domain of CD3 epsilon chain. CD3 consists of five different polypeptide chains (designated as gamma, delta, epsilon, zeta, and eta) with MW ranging from 16-28 kDa. The CD3 complex is closely associated at the lymphocyte cell surface with the T cell antigen receptor (TCR). Reportedly, CD3 complex is involved in signal transduction to the T cell interior following antigen recognition. The CD3 antigen is first detectable in early thymocytes and probably represents one of the earliest signs of commitment to the T cell lineage. In cortical thymocytes, CD3 is predominantly intra-cytoplasmic. However, in medullary thymocytes, it appears on the T cell surface. CD3 antigen is a highly specific marker for T cells, and is present in majority of T cell neoplasms. Primary antibodies are available purified, or with a selection of fluorescent CF® dyes and other labels. CF® dyes offer exceptional brightness and photostability. See the [CF® Dye Brochure](#) for more information. Note: Conjugates of blue fluorescent dyes like CF®405S and CF®405M are not recommended for detecting low abundance targets, because blue dyes have lower fluorescence and can give higher non-specific background than other dye colors. **Stock status:** Because Biotium offers a large number of antibody and conjugation options, primary antibody conjugates may be made to order. Typical lead times are up to one week for CF® dye and biotin conjugates, and up to 2-3 weeks for fluorescent protein and enzyme conjugates. Please email order@biotium.com to inquire about stock status and lead times before placing your order. **Catalog number key for antibody number 2858, CD3e Recombinant Monoclonal Rabbit Antibody (C3e/2858R)**

Product attributes

Antibody number	#2858
Antibody reactivity (target)	CD3e
Antibody type	Primary
Host species	Rabbit
Clonality	Recombinant Monoclonal
Clone	C3e/2858R
Isotype	IgG
Molecular weight	20 kDa
Synonyms	CD3 epsilon; CD3 TCR complex; CD3e antigen epsilon polypeptide (TIT3 complex); T cell antigen receptor complex epsilon subunit of T3; T-cell surface antigen T3/Leu-4 epsilon chain; T-cell surface glycoprotein CD3 epsilon chain; T3E
Human gene symbol	CD3E
Entrez gene ID	916
SwissProt	P07766
Unigene	3003
Immunogen	Recombinant human CD3e extracellular domain fragment (around aa 23-119) (exact sequence is proprietary)
Verified antibody applications	IHC (FFPE) (verified), WB (verified)
Antibody target cellular localization	Plasma membrane
Species reactivity	Human
Positive control	Jurkat cells. Tonsil and lymph node
Shipping condition	Room temperature
Storage Conditions	Store at 2 to 8 °C. Protect fluorescent conjugates from light. Note: store BSA-free antibodies at -10 to -35 °C
Regulatory status	For research use only (RUO)
Antibody/conjugate formulation	Conjugates: 0.1 mg/mL in PBS/0.1% BSA/0.05% azide, HRP conjugates: 0.1 mg/mL in PBS/0.05% BSA, Purified: 0.2 mg/mL in PBS/0.05% BSA/0.05% azide, Purified, BSA-free: 1 mg/mL in PBS without azide
Shelf life	Guaranteed for at least 24 months from date of receipt when stored as recommended
Cell/tissue expression	T-cells
Tumor expression	Leukemia/lymphoma

Antibody # prefix	Conjugation	Ex/Em (nm)	Laser line	Detection channel	Dye Features
BNC04	CF®405S	404/431	405	DAPI (microscopy), AF405	CF®405S Features
BNC88	CF®488A	490/515	488	GFP, FITC	CF®488A Features
BNC68	CF®568	562/583	532, 561	RFP, TRITC	CF®568 Features
BNC94	CF®594	593/614	561	Texas Red®	CF®594 Features
BNC40	CF®640R	642/662	633-640	Cy®5	CF®640R Features
BNC47	CF®647	650/665	633-640	Cy®5	CF®647 Features
BNCB	Biotin	N/A	N/A	N/A	
BNUB	Purified	N/A	N/A	N/A	
BNUM	Purified, BSA-free	N/A	N/A	N/A	

Alexa Fluor, Pacific Blue, Pacific Orange, and Texas Red are trademarks or registered trademarks of Thermo Fisher Scientific; Cy is a registered trademark of Cytiva; IRDye, LI-COR, LI-COR Bioscience.