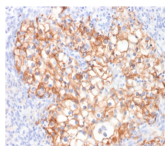


Ksp-Cadherin / CDH16 Monoclonal Mouse Antibody (CDH16/2125)



Product Description

This MAbs recognizes a protein of 130 kDa, identified as Ksp-cadherin. Cadherins form a superfamily of related glycoproteins that mediate calcium-dependent cell adhesion and transmit signals from the extracellular matrix to the cytoplasm. Cadherins have been implicated in embryogenesis, tissue morphogenesis, tissue structure maintenance, cell polarization, neoplastic invasiveness and metastasis, and membrane transport. It is suggested that Ksp-cadherin is a marker for terminal differentiation of the basolateral membranes of renal tubular epithelial cells. Within the kidney, Ksp-Cadherin is found exclusively in the basolateral membrane of renal tubular epithelial cells and collecting duct cells, and not in glomeruli, renal interstitial cells, or blood vessels. Ksp-Cadherin has been suggested to distinguish Chromophobe Renal-Cell Carcinoma from Oncocytoma.

Primary antibodies are available purified, or with a selection of fluorescent CF® dyes and other labels. CF® dyes offer exceptional brightness and photostability. See the [CF® Dye Brochure](#) for more information. Note: Conjugates of blue fluorescent dyes like CF®405S and CF®405M are not recommended for detecting low abundance targets, because blue dyes have lower fluorescence and can give higher non-specific background than other dye colors.

Stock status: Because Biotium offers a large number of antibody and conjugation options, primary antibody conjugates may be made to order. Typical lead times are up to one week for CF® dye and biotin conjugates, and up to 2-3 weeks for fluorescent protein and enzyme conjugates. Please email order@biotium.com to inquire about stock status and lead times before placing your order.

Catalog number key for antibody number 2125, Anti-CDH16|Ksp-Cadherin (CDH16/2125)

Product attributes

Antibody number	#2125
Antibody reactivity (target)	CDH16, Ksp-Cadherin
Antibody type	Primary
Host species	Mouse
Clonality	Monoclonal
Clone	CDH16/2125
Isotype	IgG1, kappa
Molecular weight	130 kDa
Synonyms	Cadherin-16 (CDH16); Kidney-specific cadherin; Ksp-cadherin antibody
Human gene symbol	CDH16
Entrez gene ID	1014
SwissProt	O75309
Unigene	513660
Immunogen	Recombinant fragment (around aa 371-507) of human CDH16 protein (exact sequence is proprietary)
Verified antibody applications	IHC (FFPE) (verified), WB (verified)
Antibody target cellular localization	Plasma membrane
Species reactivity	Human
Positive control	Normal kidney or renal cell carcinoma
Shipping condition	Room temperature
Storage Conditions	Store at 2 to 8 °C. Protect fluorescent conjugates from light. Note: store BSA-free antibodies at -10 to -35 °C
Regulatory status	For research use only (RUO)
Antibody/conjugate formulation	Conjugates: 0.1 mg/mL in PBS/0.1% BSA/0.05% azide, HRP conjugates: 0.1 mg/mL in PBS/0.05% BSA, Purified: 0.2 mg/mL in PBS/0.05% BSA/0.05% azide, Purified, BSA-free: 1 mg/mL in PBS without azide
Validated in protein array	Monospecific
Shelf life	Guaranteed for at least 24 months from date of receipt when stored as recommended
Product origin	Product may contain either bovine serum albumin (BSA) from bovine serum (Bos taurus), or recombinant BSA produced in Chinese hamster ovary cells. Inquire for the specific lot.
Cell/tissue expression	Epithelial cells
Tumor expression	Renal cancer

Antibody # prefix	Conjugation	Ex/Em (nm)	Laser line	Detection channel	Dye Features
BNC04	CF®405S	404/431	405	DAPI (microscopy), AF405	CF®405S Features
BNC88	CF®488A	490/515	488	GFP, FITC	CF®488A Features
BNC68	CF®568	562/583	532, 561	RFP, TRITC	CF®568 Features
BNC94	CF®594	593/614	561	Texas Red®	CF®594 Features
BNC40	CF®640R	642/662	633-640	Cy®5	CF®640R Features
BNC47	CF®647	650/665	633-640	Cy®5	CF®647 Features
BNC74	CF®740	742/767	633-685	775/50	CF®740 Features
BNCB	Biotin	N/A	N/A	N/A	
BNUB	Purified	N/A	N/A	N/A	
BNUM	Purified, BSA-free	N/A	N/A	N/A	

Alexa Fluor, Pacific Blue, Pacific Orange, and Texas Red are trademarks or registered trademarks of Thermo Fisher Scientific; Cy is a registered trademark of Cytiva; IRDye, LI-COR, and Odyssey are registered trademarks of LI-COR Bioscience.

This datasheet was generated on September 17, 2025 at 09:54:09 AM. Visit product page to check for updated information before use.
Product link: <https://biotium.com/product/ksp-cadherin-cdh16-monoclonal-mouse-antibody-cdh16-2125/>