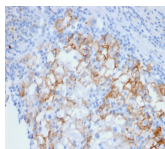


Ksp-Cadherin / CDH16 Monoclonal Mouse Antibody (CDH16/2448)



Product Description

This MAb recognizes a protein of 130 kDa, identified as Ksp-cadherin. Cadherins form a superfamily of related glycoproteins that mediate calcium-dependent cell adhesion and transmit signals from the extracellular matrix to the cytoplasm. Cadherins have been implicated in embryogenesis, tissue morphogenesis, tissue structure maintenance, cell polarization, neoplastic invasiveness and metastasis, and membrane transport. It is suggested that Ksp-cadherin is a marker for terminal differentiation of the basolateral membranes of renal tubular epithelial cells. Within the kidney, Ksp-Cadherin is found exclusively in the basolateral membrane of renal tubular epithelial cells and collecting duct cells, and not in glomeruli, renal interstitial cells, or blood vessels. Ksp-Cadherin has been suggested to distinguish Chromophobe Renal-Cell Carcinoma from Oncocytoma.

Primary antibodies are available purified, or with a selection of fluorescent CF® dyes and other labels. CF® dyes offer exceptional brightness and photostability. See the [CF® Dye Brochure](#) for more information. Note: Conjugates of blue fluorescent dyes like CF®405S and CF®405M are not recommended for detecting low abundance targets, because blue dyes have lower fluorescence and can give higher non-specific background than other dye colors.

Stock status: Because Biotium offers a large number of antibody and conjugation options, primary antibody conjugates may be made to order. Typical lead times are up to one week for CF® dye and biotin conjugates, and up to 2-3 weeks for fluorescent protein and enzyme conjugates. Please email order@biotium.com to inquire about stock status and lead times before placing your order.

Catalog number key for antibody number 2448, Anti-CDH16|Ksp-Cadherin (CDH16/2448)

Call us : [800-304-5357](tel:800-304-5357)

Product attributes

| | |
|---------------------------------------|---|
| Antibody number | #2448 |
| Antibody reactivity (target) | CDH16, Ksp-Cadherin |
| Antibody type | Primary |
| Host species | Mouse |
| Clonality | Monoclonal |
| Clone | CDH16/2448 |
| Isotype | IgG2b, kappa |
| Molecular weight | 130 kDa |
| Synonyms | Cadherin-16 (CDH16); Kidney-specific cadherin; Ksp-cadherin antibody |
| Human gene symbol | CDH16 |
| Entrez gene ID | 1014 |
| SwissProt | O75309 |
| Unigene | 513660 |
| Immunogen | Recombinant fragment (around aa 371-507) of human CDH16 protein (exact sequence is proprietary) |
| Verified antibody applications | IHC (FFPE) (verified) |
| Antibody target cellular localization | Plasma membrane |
| Species reactivity | Human |
| Positive control | Normal kidney or renal cell carcinoma |
| Shipping condition | Room temperature |
| Storage Conditions | Store at 2 to 8 °C. Protect fluorescent conjugates from light. Note: store BSA-free antibodies at -10 to -35 °C |
| Regulatory status | For research use only (RUO) |
| Antibody/conjugate formulation | Conjugates: 0.1 mg/mL in PBS/0.1% BSA/0.05% azide, HRP conjugates: 0.1 mg/mL in PBS/0.05% BSA, Purified: 0.2 mg/mL in PBS/0.05% BSA/0.05% azide, Purified, BSA-free: 1 mg/mL in PBS without azide |
| Validated in protein array | Monospecific |
| Shelf life | Guaranteed for at least 24 months from date of receipt when stored as recommended |
| Product origin | Product may contain either bovine serum albumin (BSA) from bovine serum (Bos taurus), or recombinant BSA produced in Chinese hamster ovary cells. Inquire for the specific lot. |
| Cell/tissue expression | Epithelial cells |
| Tumor expression | Renal cancer |

| Antibody # prefix | Conjugation | Ex/Em (nm) | Laser line | Detection channel | Dye Features |
|-------------------|--------------------|------------|------------|--------------------------|----------------------------------|
| BNC04 | CF®405S | 404/431 | 405 | DAPI (microscopy), AF405 | CF®405S Features |
| BNC88 | CF®488A | 490/515 | 488 | GFP, FITC | CF®488A Features |
| BNC68 | CF®568 | 562/583 | 532, 561 | RFP, TRITC | CF®568 Features |
| BNC94 | CF®594 | 593/614 | 561 | Texas Red® | CF®594 Features |
| BNC40 | CF®640R | 642/662 | 633-640 | Cy®5 | CF®640R Features |
| BNC47 | CF®647 | 650/665 | 633-640 | Cy®5 | CF®647 Features |
| BNC74 | CF®740 | 742/767 | 633-685 | 775/50 | CF®740 Features |
| BNCB | Biotin | N/A | N/A | N/A | |
| BNUB | Purified | N/A | N/A | N/A | |
| BNUM | Purified, BSA-free | N/A | N/A | N/A | |

Alexa Fluor, Pacific Blue, Pacific Orange, and Texas Red are trademarks or registered trademarks of Thermo Fisher Scientific; Cy is a registered trademark of Cytiva; IRDye, LI-COR, and Odyssey are registered trademarks of LI-COR Bioscience.

This datasheet was generated on December 12, 2025 at 01:03:54 PM. Visit product page to check for updated information before use.
Product link: <https://biotium.com/product/ksp-cadherin-cdh16-monoclonal-mouse-antibody-cdh16-2448/>