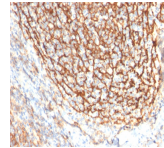


CD21 Monoclonal Mouse Antibody (CR2/2754)



Product Description

Recognizes a protein of 140 kDa, which is identified as the complement receptor 2 (CR2) or CD21. This protein is expressed strongly on mature B cells, follicular dendritic cells and weakly on immature thymocytes and T lymphocytes. In B-cell ontogeny, CD21 appears after the pre-B-stage, is maintained during peripheral B-cell development and is lost upon terminal differentiation into plasma cells. CD21 expression is also gradually lost after stimulation of B cells in vitro. CD21 functions as receptor for C3d, C3dg and iC3b Complement components, for EBV and for IFNalpha. CD21 binds to CD23 and associates with CD19, CD81 and Leu13 to form a large signal-transduction complex involved in B cell activation. Primary antibodies are available purified, or with a selection of fluorescent CF® dyes and other labels. CF® dyes offer exceptional brightness and photostability. See the [CF® Dye Brochure](#) for more information. Note: Conjugates of blue fluorescent dyes like CF®405S and CF®405M are not recommended for detecting low abundance targets, because blue dyes have lower fluorescence and can give higher non-specific background than other dye colors. **Stock status:** Because Biotium offers a large number of antibody and conjugation options, primary antibody conjugates may be made to order. Typical lead times are up to one week for CF® dye and biotin conjugates, and up to 2-3 weeks for fluorescent protein and enzyme conjugates. Please email order@biotium.com to inquire about stock status and lead times before placing your order.

Product attributes

| | |
|---------------------------------------|---|
| Antibody number | #2754 |
| Antibody reactivity (target) | CD21 |
| Antibody type | Primary |
| Host species | Mouse |
| Clonality | Monoclonal |
| Clone | CR2/2754 |
| Isotype | IgG1, kappa |
| Molecular weight | 140 kDa |
| Synonyms | CD21; Complement C3d receptor (CD21); Complement Receptor type 2 (CR2); CVID7; EBV receptor; EBV-R; Epstein-Barr virus receptor; EVBR; SLEB9 |
| Human gene symbol | CR2 |
| Entrez gene ID | 1380 |
| SwissProt | P20023 |
| Unigene | 445757 |
| Immunogen | Recombinant fragment (around aa 142-240) of human CR2 (CD21) protein (exact sequence is proprietary) |
| Verified antibody applications | Flow (verified), IF (verified), IHC (FFPE) (verified), WB (verified) |
| Antibody target cellular localization | Plasma membrane |
| Species reactivity | Human |
| Positive control | MOLT4, Raji or WEHI-231 cells. Tonsil. |
| Shipping condition | Room temperature |
| Storage Conditions | Store at 2 to 8 °C. Protect fluorescent conjugates from light. Note: store BSA-free antibodies at -10 to -35 °C |
| Regulatory status | For research use only (RUO) |
| Antibody/conjugate formulation | Conjugates: 0.1 mg/mL in PBS/0.1% BSA/0.05% azide, HRP conjugates: 0.1 mg/mL in PBS/0.05% BSA, Purified: 0.2 mg/mL in PBS/0.05% BSA/0.05% azide, Purified, BSA-free: 1 mg/mL in PBS without azide |
| Validated in protein array | Monospecific |
| Shelf life | Guaranteed for at least 24 months from date of receipt when stored as recommended |
| Cell/tissue expression | Antigen presenting cells, B-cells, Lymphocytes |

| Antibody # prefix | Conjugation | Ex/Em (nm) | Laser line | Detection channel |
|-------------------|--------------------|------------|------------|--------------------------|
| BNC04 | CF®405S | 404/431 | 405 | DAPI (microscopy), AF405 |
| BNC88 | CF®488A | 490/515 | 488 | GFP, FITC |
| BNC68 | CF®568 | 562/583 | 532, 561 | RFP, TRITC |
| BNC94 | CF®594 | 593/614 | 561 | Texas Red® |
| BNC40 | CF®640R | 642/662 | 633-640 | Cy®5 |
| BNC47 | CF®647 | 650/665 | 633-640 | Cy®5 |
| BNCB | Biotin | N/A | N/A | N/A |
| BNUB | Purified | N/A | N/A | N/A |
| BNUM | Purified, BSA-free | N/A | N/A | N/A |

Dye Features

- [CF®405S Features](#)
- [CF®488A Features](#)
- [CF®568 Features](#)
- [CF®594 Features](#)
- [CF®640R Features](#)
- [CF®647 Features](#)

Alexa Fluor, Pacific Blue, Pacific Orange, and Texas Red are trademarks or registered trademarks of Thermo Fisher Scientific; Cy is a registered trademark of Cytiva; IRDye, LI-COR, LI-COR Bioscience.