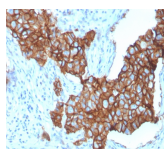


# HER-2 / CD340 Monoclonal Mouse Antibody (ErbB2/3257)



## Product Description

Recognizes a protein of 185 kDa, which is identified as c-erbB-2/HER-2/neu. Its epitope is localized in the extracellular domain. C-erbB-2/HER-2 is a member of the EGFR family. This MAb is specific and shows minimal cross-reaction with other members of the EGFR-family. Receptors of this family are located on the plasma membrane and consist of an extracellular ligand-binding domain that is connected to a large intracellular domain by a single transmembrane sequence. c-erbB-2/HER-2 protein is over-expressed in a variety of carcinomas especially those of breast and ovary.

Primary antibodies are available purified, or with a selection of fluorescent CF® dyes and other labels. CF® dyes offer exceptional brightness and photostability. See the [CF® Dye Brochure](#) for more information. Note: Conjugates of blue fluorescent dyes like CF®405S and CF®405M are not recommended for detecting low abundance targets, because blue dyes have lower fluorescence and can give higher non-specific background than other dye colors.

**Stock status:** Because Biotium offers a large number of antibody and conjugation options, primary antibody conjugates may be made to order. Typical lead times are up to one week for CF® dye and biotin conjugates, and up to 2-3 weeks for fluorescent protein and enzyme conjugates. Please email [order@biotium.com](mailto:order@biotium.com) to inquire about stock status and lead times before placing your order.

**Catalog number key for antibody number 3257, Anti-c-ErbB-2|CD340|HER-2|Neu (ERBB2/3257)**

Call us : [800-304-5357](tel:800-304-5357)

## Product attributes

<b>Antibody number</b>	#3257
<b>Antibody reactivity (target)</b>	c-ErbB-2, CD340, HER-2, Neu
<b>Antibody type</b>	Primary
<b>Host species</b>	Mouse
<b>Clonality</b>	Monoclonal
<b>Clone</b>	ERBB2/3257
<b>Isotype</b>	IgG2b, kappa
<b>Molecular weight of antigen</b>	185 kDa
<b>Synonyms</b>	p185; CD340; Verb b2 Erythroblastic Leukemia Viral Oncogene Homolog 2; Neuro/Glioblastoma Derived Oncogene Homolog
<b>Human gene symbol</b>	ERBB2
<b>Entrez gene ID</b>	2064
<b>SwissProt</b>	IDP04626
<b>Unigene</b>	446352
<b>Immunogen</b>	Recombinant human HER-2 protein fragment (around aa 311-462) (exact sequence is proprietary)
<b>Verified antibody applications</b>	Flow (verified), IHC (FFPE) (verified)
<b>Antibody target cellular localization</b>	Plasma membrane
<b>Species reactivity</b>	Human
<b>Positive control</b>	SKBR-3 cells. Human breast carcinoma tissue (IHC).
<b>Shipping condition</b>	Room temperature
<b>Storage Conditions</b>	Store at 2 to 8 °C, Protect fluorescent conjugates from light, Note: store BSA-free antibodies at -10 to -35 °C
<b>Regulatory status</b>	For research use only (RUO)
<b>Antibody/conjugate formulation</b>	Conjugates: 0.1 mg/mL in PBS/0.1% BSA/0.05% azide, HRP conjugates: 0.1 mg/mL in PBS/0.05% BSA, Purified: 0.2 mg/mL in PBS/0.05% BSA/0.05% azide, Purified, BSA-free: 1 mg/mL in PBS without azide
<b>Validated in protein array</b>	Monospecific
<b>Shelf life</b>	Guaranteed for at least 24 months from date of receipt when stored as recommended
<b>Product origin</b>	Product may contain either bovine serum albumin (BSA) from bovine serum ( <i>Bos taurus</i> ), or recombinant BSA produced in Chinese hamster ovary cells. Inquire for the specific lot.
<b>Tumor expression</b>	Breast cancer, Ovarian cancer

Antibody # prefix	Conjugation	Ex/Em (nm)	Laser line	Detection channel	Dye Features
BNC04	CF®405S	404/431	405	DAPI (microscopy), AF405	<a href="#">CF®405S Features</a>
BNC88	CF®488A	490/515	488	GFP, FITC	<a href="#">CF®488A Features</a>
BNC68	CF®568	562/583	532, 561	RFP, TRITC	<a href="#">CF®568 Features</a>
BNC94	CF®594	593/614	561	Texas Red®	<a href="#">CF®594 Features</a>
BNC40	CF®640R	642/662	633-640	Cy®5	<a href="#">CF®640R Features</a>
BNC47	CF®647	650/665	633-640	Cy®5	<a href="#">CF®647 Features</a>
BNC74	CF®740	742/767	633-685	775/50	<a href="#">CF®740 Features</a>
BNCB	Biotin	N/A	N/A	N/A	
BNUB	Purified	N/A	N/A	N/A	
BNUM	Purified, BSA-free	N/A	N/A	N/A	

Alexa Fluor, Pacific Blue, Pacific Orange, and Texas Red are trademarks or registered trademarks of Thermo Fisher Scientific; Cy is a registered trademark of Cytiva; IRDye, LI-COR, and Odyssey are registered trademarks of LI-COR Bioscience.

This datasheet was generated on June 4, 2026 at 10:04:56 AM. Visit product page to check for updated information before use.

Product link: <https://biotium.com/product/her-2-cd340-monoclonal-mouse-antibody-erbb2-3257/>