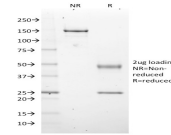


EZH2 / KMT6 Monoclonal Mouse Antibody (EZH2/2536)



Product Description

This gene encodes a member of the Polycomb-group (PcG) family. PcG family members form multimeric protein complexes, which are involved in maintaining the transcriptional repressive state of genes over successive cell generations. This protein associates with the embryonic ectoderm development protein, the VAV1 oncoprotein, and the X-linked nuclear protein. This protein may play a role in the hematopoietic and central nervous systems. Multiple alternatively spliced transcript variants encoding distinct isoforms have been identified for this gene. Primary antibodies are available purified, or with a selection of fluorescent CF® dyes and other labels. CF® dyes offer exceptional brightness and photostability. See the [CF® Dye Brochure](#) for more information. Note: Conjugates of blue fluorescent dyes like CF®405S and CF®405M are not recommended for detecting low abundance targets, because blue dyes have lower fluorescence and can give higher non-specific background than other dye colors. **Stock status:** Because Biotium offers a large number of antibody and conjugation options, primary antibody conjugates may be made to order. Typical lead times are up to one week for CF® dye and biotin conjugates, and up to 2-3 weeks for fluorescent protein and enzyme conjugates. Please email order@biotium.com to inquire about stock status and lead times before placing your order.

Product attributes

Antibody number	#2536
Antibody reactivity (target)	EZH2, KMT6
Antibody type	Primary
Host species	Mouse
Clonality	Monoclonal
Clone	EZH2/2536
Isotype	IgG2a, kappa
Molecular weight	81-102 kDa
Synonyms	Enhancer of zeste 2 polycomb repressive complex 2 subunit; Enhancer of zeste homolog 2 (EZH2); ENX1; Enx1h; EZH2b; Histone-lysine N-methyltransferase EZH2; KMT6; KMT6A; Lysine N-methyltransferase 6; WVS; WVS2
Human gene symbol	EZH2
Entrez gene ID	2146
SwissProt	Q15910
Unigene	444082
Immunogen	Recombinant full-length human EZH2 protein
Verified antibody applications	WB (verified)
Antibody target cellular localization	Nucleus
Species reactivity	Human
Antibody application notes	Western blot 0.5-1.0 ug/mL; Optimal dilution for a specific application should be determined.
Positive control	MCF7, HeLa, U-2 OS or HEK-293 whole cell lysates. Human tonsil, testis or prostate tissue.
Shipping condition	Room temperature
Storage Conditions	Store at 2 to 8 °C. Protect fluorescent conjugates from light. Note: store BSA-free antibodies at -10 to -35 °C
Regulatory status	For research use only (RUO)
Antibody/conjugate formulation	Conjugates: 0.1 mg/mL in PBS/0.1% BSA/0.05% azide, HRP conjugates: 0.1 mg/mL in PBS/0.05% BSA, Purified: 0.2 mg/mL in PBS/0.05% BSA/0.05% azide, Purified, BSA-free: 1 mg/mL in PBS without azide
Validated in protein array	Monospecific
Shelf life	Guaranteed for at least 24 months from date of receipt when stored as recommended

Antibody # prefix	Conjugation	Ex/Em (nm)	Laser line	Detection channel
BNC04	CF®405S	404/431	405	DAPI (microscopy), AF405
BNC88	CF®488A	490/515	488	GFP, FITC
BNC68	CF®568	562/583	532, 561	RFP, TRITC
BNC94	CF®594	593/614	561	Texas Red®
BNC40	CF®640R	642/662	633-640	Cy®5
BNC47	CF®647	650/665	633-640	Cy®5
BNCB	Biotin	N/A	N/A	N/A
BNUB	Purified	N/A	N/A	N/A
BNUM	Purified, BSA-free	N/A	N/A	N/A

Dye Features

- [CF®405S Features](#)
- [CF®488A Features](#)
- [CF®568 Features](#)
- [CF®594 Features](#)
- [CF®640R Features](#)
- [CF®647 Features](#)

Alexa Fluor, Pacific Blue, Pacific Orange, and Texas Red are trademarks or registered trademarks of Thermo Fisher Scientific; Cy is a registered trademark of Cytiva; IRDye, LI-COR, LI-COR Bioscience.