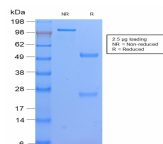


HLA-DP Recombinant Monoclonal Rabbit Antibody (HLA-DPB1/2862R)



Product Description

Recognizes a non-polymorphic determinant of DP-MHC class II. MHC class II antigens are transmembrane glycoproteins of non-covalently linked alpha (33-35 kDa) and beta (27-30 kDa) chains. It reportedly reacts with B-non-T, non-B cell lines but not with T- and myeloid cell lines and leukemias. Differential expression of MHC class II antigens on fetal and adult lymphocytes, malignant B cells appears to reflect the stage of cell differentiation which may be useful in the study of lymphoproliferative disorders. Primary antibodies are available purified, or with a selection of fluorescent CF® dyes and other labels. CF® dyes offer exceptional brightness and photostability. See the [CF® Dye Brochure](#) for more information. Note: Conjugates of blue fluorescent dyes like CF®405S and CF®405M are not recommended for detecting low abundance targets, because blue dyes have lower fluorescence and can give higher non-specific background than other dye colors. **Stock status:** Because Biotium offers a large number of antibody and conjugation options, primary antibody conjugates may be made to order. Typical lead times are up to one week for CF® dye and biotin conjugates, and up to 2-3 weeks for fluorescent protein and enzyme conjugates. Please email order@biotium.com to inquire about stock status and lead times before placing your order.

Product attributes

Antibody number	#2862
Antibody reactivity (target)	HLA-DP
Antibody type	Primary
Host species	Rabbit
Clonality	Recombinant Monoclonal
Clone	HLA-DPB1/2862R
Isotype	IgG
Molecular weight	33-35 kDa
Synonyms	HLA class II histocompatibility antigen DP alpha 1 chain; HLA DP1A; HLA SB alpha chain; HLADP; HLADPA1; HLASB; HLASB histocompatibility type; Human MHC class II HLA SB alpha; Major histocompatibility complex class II DP alpha 1; MHC class II DP3 alpha; MHC class II DP1A1; PLT1; Primed lymphocyte test 1
Human gene symbol	HLA-DPB1
Entrez gene ID	3115
SwissProt	P04440
Unigene	347270
Immunogen	Non-T, non-B human acute lymphoblastic leukemia REH6 cell line
Verified antibody applications	Flow (verified), IF (verified)
Antibody target cellular localization	Plasma membrane
Species reactivity	Human
Antibody application notes	ELISA: For coating use Ab at 2-4 ug/mL, order Ab without BSA; Flow cytometry: 1-2 ug/million cells; Immunofluorescence: 1-2 ug/mL; Optimal dilution for a specific application should be determined. Higher concentration may be required for direct detection using primary antibody conjugates than for indirect detection with secondary antibody
Positive control	Raji cells. Tonsil or lymph node
Shipping condition	Room temperature
Storage Conditions	Store at 2 to 8 °C, Protect fluorescent conjugates from light, Note: store BSA-free antibodies at -10 to -35 °C
Regulatory status	For research use only (RUO)
Antibody/conjugate formulation	Conjugates: 0.1 mg/mL in PBS/0.1% BSA/0.05% azide, HRP conjugates: 0.1 mg/mL in PBS/0.05% BSA, Purified: 0.2 mg/mL in PBS/0.05% BSA/0.05% azide, Purified, BSA-free: 1 mg/mL in PBS without azide
Shelf life	Guaranteed for at least 24 months from date of receipt when stored as recommended

Antibody # prefix	Conjugation	Ex/Em (nm)	Laser line	Detection channel
BNC04	CF®405S	404/431	405	DAPI (microscopy), AF405
BNC88	CF®488A	490/515	488	GFP, FITC
BNC68	CF®568	562/583	532, 561	RFP, TRITC
BNC94	CF®594	593/614	561	Texas Red®
BNC40	CF®640R	642/662	633-640	Cy®5
BNC47	CF®647	650/665	633-640	Cy®5
BNCB	Biotin	N/A	N/A	N/A
BNUB	Purified	N/A	N/A	N/A
BNUM	Purified, BSA-free	N/A	N/A	N/A

Dye Features

[CF®405S Features](#)
[CF®488A Features](#)
[CF®568 Features](#)
[CF®594 Features](#)
[CF®640R Features](#)
[CF®647 Features](#)

Alexa Fluor, Pacific Blue, Pacific Orange, and Texas Red are trademarks or registered trademarks of Thermo Fisher Scientific; Cy is a registered trademark of Cytiva; IRDye, LI-COR, LI-COR Bioscience.