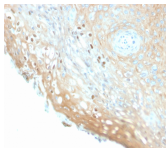


Human Papillomavirus 16 (HPV-16) Recombinant Monoclonal Rabbit Antibody (HPV16/2058R)



Product Description

Reacts with a protein of 57 kDa, identified as the L1 protein of human papilloma virus type 16 (HPV-16). It is the major capsid protein of HPV-16. Infection with specific types of HPV has been associated with an increased risk of developing cervical neoplasia. HPV types 6 and 11 have been associated with relatively benign diseases such as genital warts but types 16 and 18 are strongly associated with cervical, vaginal, and vulvar malignancies. The antibody reacts very strongly with formalin-fixed, paraffin-embedded tissues containing HPV-16 or -33; very weak reactions were occasionally observed with biopsy specimens or smears containing HPV-6 or HPV-11. It cross-reacts with HPV37. Primary antibodies are available purified, or with a selection of fluorescent CF® dyes and other labels. CF® dyes offer exceptional brightness and photostability. See the [CF® Dye Brochure](#) for more information. Note: Conjugates of blue fluorescent dyes like CF®405S and CF®405M are not recommended for detecting low abundance targets, because blue dyes have lower fluorescence and can give higher non-specific background than other dye colors. **Stock status:** Because Biotium offers a large number of antibody and conjugation options, primary antibody conjugates may be made to order. Typical lead times are up to one week for CF® dye and biotin conjugates, and up to 2-3 weeks for fluorescent protein and enzyme conjugates. Please email order@biotium.com to inquire about stock status and lead times before placing your order.

| Product attributes | |
|---------------------------------------|---|
| Antibody number | #2058 |
| Antibody reactivity (target) | HPV-16 |
| Antibody type | Primary |
| Host species | Rabbit |
| Clonality | Recombinant Monoclonal |
| Clone | HPV16/2058R |
| Isotype | IgG |
| Molecular weight | 57 kDa |
| Synonyms | HPV-16; HPV-16 capsid; HPV16 L1; HPV16 major capsid protein L1; Human papillomavirus type 16 L1; Human papillomavirus type 16 major capsid protein L1 |
| Human gene symbol | Not Applicable |
| Entrez gene ID | Not Applicable |
| SwissProt | Not Applicable |
| Unigene | Not Applicable |
| Immunogen | Human papilloma virus type 16, major capsid protein L1 |
| Verified antibody applications | IHC (FFPE) (verified) |
| Antibody target cellular localization | Nucleus |
| Species reactivity | HPV-16 |
| Positive control | HPV-16 infected cells. Cervical tissue. |
| Shipping condition | Room temperature |
| Storage Conditions | Store at 2 to 8 °C, Protect fluorescent conjugates from light, Note: store BSA-free antibodies at -10 to -35 °C |
| Regulatory status | For research use only (RUO) |
| Antibody/conjugate formulation | Conjugates: 0.1 mg/mL in PBS/0.1% BSA/0.05% azide, HRP conjugates: 0.1 mg/mL in PBS/0.05% BSA, Purified: 0.2 mg/mL in PBS/0.05% BSA/0.05% azide, Purified, BSA-free: 1 mg/mL in PBS without azide |
| Shelf life | Guaranteed for at least 24 months from date of receipt when stored as recommended |
| Tumor expression | Cervical cancer |

| Antibody # prefix | Conjugation | Ex/Em (nm) | Laser line | Detection channel |
|-------------------|--------------------|------------|------------|--------------------------|
| BNC04 | CF®405S | 404/431 | 405 | DAPI (microscopy), AF405 |
| BNC88 | CF®488A | 490/515 | 488 | GFP, FITC |
| BNC68 | CF®568 | 562/583 | 532, 561 | RFP, TRITC |
| BNC94 | CF®594 | 593/614 | 561 | Texas Red® |
| BNC40 | CF®640R | 642/662 | 633-640 | Cy®5 |
| BNC47 | CF®647 | 650/665 | 633-640 | Cy®5 |
| BNCB | Biotin | N/A | N/A | N/A |
| BNUB | Purified | N/A | N/A | N/A |
| BNUM | Purified, BSA-free | N/A | N/A | N/A |

| Dye Features |
|----------------------------------|
| CF®405S Features |
| CF®488A Features |
| CF®568 Features |
| CF®594 Features |
| CF®640R Features |
| CF®647 Features |

Alexa Fluor, Pacific Blue, Pacific Orange, and Texas Red are trademarks or registered trademarks of Thermo Fisher Scientific; Cy is a registered trademark of Cytiva; IRDye, LI-COR, LI-COR Bioscience.