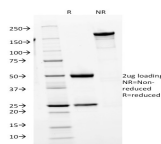


# Human IgM Immunoglobulin Monoclonal Mouse Antibody (IGHM/1623)



## Product Description

Recognizes a protein of 75 kDa, identified as mu heavy chain of human immunoglobulins. It does not cross-react with alpha (IgA), gamma (IgG), epsilon (IgE), or delta (IgD), heavy chains, T-cells, monocytes, granulocytes, or erythrocytes. Monomeric IgM is expressed as a membrane bound antibody on the surface of B cells and as a pentamer when secreted by plasma cells. IgM antibody is prominent in early immune responses to most antigens. Aberrant levels are associated with immune deficiency states, hereditary deficiencies, myeloma, Waldenstrom's macroglobulinemia, chronic infection and hepatocellular disease. This MAb is useful in the identification of leukemias, plasmacytomas, and certain non-Hodgkin's lymphomas. The most common feature of these malignancies is the restricted expression of a single heavy chain class. Demonstration of clonality in lymphoid infiltrates indicates that the infiltrate is clonal and therefore malignant.

Primary antibodies are available purified, or with a selection of fluorescent CF® dyes and other labels. CF® dyes offer exceptional brightness and photostability. See the [CF® Dye Brochure](#) for more information. Note: Conjugates of blue fluorescent dyes like CF®405S and CF®405M are not recommended for detecting low abundance targets, because blue dyes have lower fluorescence and can give higher non-specific background than other dye colors.

**Stock status:** Because Biotium offers a large number of antibody and conjugation options, primary antibody conjugates may be made to order. Typical lead times are up to one week for CF® dye and biotin conjugates, and up to 2-3 weeks for fluorescent protein and enzyme conjugates. Please email [order@biotium.com](mailto:order@biotium.com) to inquire about stock status and lead times before placing your order.

**Catalog number key for antibody number 1623, Anti-IgM (IGHM/1623)**

## Product attributes

|  |   |
|--|---|
| <b>Antibody number</b>                       | #1623   |
| <b>Antibody reactivity (target)</b>          | IgM   |
| <b>Antibody type</b>                         | Primary   |
| <b>Host species</b>                          | Mouse   |
| <b>Clonality</b>                             | Monoclonal  |
| <b>Clone</b>                                 | IGHM/1623   |
| <b>Isotype</b>                               | IgG1, kappa   |
| <b>Molecular weight</b>                      | 50-75 kDa   |
| <b>Synonyms</b>                              | AGM1; IGHM; Constant Region of Heavy Chain of IgM; Ig Mu Chain C Region   |
| <b>Human gene symbol</b>                     | IGHM  |
| <b>Entrez gene ID</b>                        | 3507  |
| <b>SwissProt</b>                             | P01871 & P20769   |
| <b>Unigene</b>                               | 510635  |
| <b>Immunogen</b>                             | Heavy chain of human IgM  |
| <b>Antibody target cellular localization</b> | Plasma membrane, Secreted (extracellular)   |
| <b>Species reactivity</b>                    | Human   |
| <b>Antibody application notes</b>            | For coating for ELISA, order Ab without BSA, Higher concentration may be required for direct detection using primary antibody conjugates than for indirect detection with secondary antibody, Optimal dilution and staining procedure for a specific application should be determined by user. Recommended starting concentrations for titration are 1-2 ug/mL for most applications, or 1 ug/million cells/100 uL for flow cytometry |
| <b>Positive control</b>                      | 293T, Raji or hPBL cells. Tonsil or Spleen  |
| <b>Shipping condition</b>                    | Room temperature  |
| <b>Storage Conditions</b>                    | Store at 2 to 8 °C, Protect fluorescent conjugates from light, Note: store BSA-free antibodies at -10 to -35 °C   |
| <b>Regulatory status</b>                     | For research use only (RUO)   |
| <b>Antibody/conjugate formulation</b>        | Conjugates: 0.1 mg/mL in PBS/0.1% BSA/0.05% azide, HRP conjugates: 0.1 mg/mL in PBS/0.05% BSA, Purified: 0.2 mg/mL in PBS/0.05% BSA/0.05% azide, Purified, BSA-free: 1 mg/mL in PBS without azide   |
| <b>Shelf life</b>                            | Guaranteed for at least 24 months from date of receipt when stored as recommended   |
| <b>Product origin</b>                        | Product may contain either bovine serum albumin (BSA) from bovine serum ( <i>Bos taurus</i> ), or recombinant BSA produced in Chinese hamster ovary cells. Inquire for the specific lot.  |
| <b>Cell/tissue expression</b>                | B-cells   |
| <b>Antibody research areas</b>               | Cancer, Immunology, Inflammation  |
| <b>Tumor expression</b>                      | Leukemia/lymphoma   |

| Antibody # prefix | Conjugation        | Ex/Em (nm) | Laser line | Detection channel        | Dye Features                     |
|-------------------|--------------------|------------|------------|--------------------------|----------------------------------|
| BNC04             | CF®405S            | 404/431    | 405        | DAPI (microscopy), AF405 | <a href="#">CF®405S Features</a> |
| BNC88             | CF®488A            | 490/515    | 488        | GFP, FITC                | <a href="#">CF®488A Features</a> |
| BNC68             | CF®568             | 562/583    | 532, 561   | RFP, TRITC               | <a href="#">CF®568 Features</a>  |
| BNC94             | CF®594             | 593/614    | 561        | Texas Red®               | <a href="#">CF®594 Features</a>  |
| BNC40             | CF®640R            | 642/662    | 633-640    | Cy®5                     | <a href="#">CF®640R Features</a> |
| BNC47             | CF®647             | 650/665    | 633-640    | Cy®5                     | <a href="#">CF®647 Features</a>  |
| BNC74             | CF®740             | 742/767    | 633-685    | 775/50                   | <a href="#">CF®740 Features</a>  |
| BNCB              | Biotin             | N/A        | N/A        | N/A                      |                                  |
| BNUB              | Purified           | N/A        | N/A        | N/A                      |                                  |
| BNUM              | Purified, BSA-free | N/A        | N/A        | N/A                      |                                  |

Alexa Fluor, Pacific Blue, Pacific Orange, and Texas Red are trademarks or registered trademarks of Thermo Fisher Scientific; Cy is a registered trademark of Cytiva; IRDye, LI-COR, and Odyssey are registered trademarks of LI-COR Bioscience.

This datasheet was generated on November 21, 2024 at 06:49:55 AM. Visit product page to check for updated information before use. Product link: <https://biotium.com/product/human-igm-immunoglobulin-monoclonal-mouse-antibody-ighm-1623/>