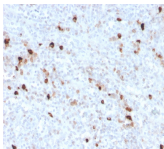


Human IgM Immunoglobulin

Recombinant Monoclonal Rabbit

Antibody (IGHM/3776R)



Product Description

Recognizes a protein of 75 kDa, identified as mu heavy chain of human immunoglobulins. It does not cross-react with alpha (IgA), gamma (IgG), epsilon (IgE), or delta (IgD), heavy chains, T-cells, monocytes, granulocytes, or erythrocytes. This MAb is useful in the identification of leukemias, plasmacytomas, and certain non-Hodgkin's lymphomas. The most common feature of these malignancies is the restricted expression of a single heavy chain class. Demonstration of clonality in lymphoid infiltrates indicates that the infiltrate is clonal and therefore malignant.

Primary antibodies are available purified, or with a selection of fluorescent CF® dyes and other labels. CF® dyes offer exceptional brightness and photostability. See the [CF® Dye Brochure](#) for more information. Note: Conjugates of blue fluorescent dyes like CF®405S and CF®405M are not recommended for detecting low abundance targets, because blue dyes have lower fluorescence and can give higher non-specific background than other dye colors.

Stock status: Because Biotium offers a large number of antibody and conjugation options, primary antibody conjugates may be made to order. Typical lead times are up to one week for CF® dye and biotin conjugates, and up to 2-3 weeks for fluorescent protein and enzyme conjugates. Please email order@biotium.com to inquire about stock status and lead times before placing your order.

Catalog number key for antibody number 3776, Anti-IgM Mu Heavy Chain (IGHM/3776R)

Call us : [800-304-5357](tel:800-304-5357)

Email: techsupport@biotium.com

Product attributes

| | |
|---------------------------------------|---|
| Antibody number | #3776 |
| Antibody reactivity (target) | IgM Mu Heavy Chain |
| Antibody type | Primary, Anti-Human Immunoglobulin |
| Host species | Rabbit |
| Clonality | Recombinant Monoclonal |
| Clone | IGHM/3776R |
| Isotype | IgG |
| Molecular weight | 50-75 kDa |
| Synonyms | AGM1; IGHM; Constant Region of Heavy Chain of IgM; Ig Mu Chain C Region |
| Human gene symbol | IGHM |
| Entrez gene ID | 3507 |
| SwissProt | P01871 & P20769 |
| Unigene | 510635 |
| Immunogen | Recombinant full-length human IGHM protein |
| Verified antibody applications | IHC (FFPE) (verified) |
| Antibody target cellular localization | Plasma membrane, Secreted (extracellular) |
| Species reactivity | Human |
| Positive control | 293T, Raji or hPBL cells. Human tonsil or spleen (IHC). |
| Shipping condition | Room temperature |
| Storage Conditions | Store at 2 to 8 °C. Protect fluorescent conjugates from light, Note: store BSA-free antibodies at -10 to -35 °C |
| Regulatory status | For research use only (RUO) |
| Antibody/conjugate formulation | Conjugates: 0.1 mg/mL in PBS/0.1% BSA/0.05% azide, HRP conjugates: 0.1 mg/mL in PBS/0.05% BSA, Purified: 0.2 mg/mL in PBS/0.05% BSA/0.05% azide, Purified, BSA-free: 1 mg/mL in PBS without azide |
| Shelf life | Guaranteed for at least 24 months from date of receipt when stored as recommended |
| Product origin | Product may contain either bovine serum albumin (BSA) from bovine serum (Bos taurus), or recombinant BSA produced in Chinese hamster ovary cells. Inquire for the specific lot. |
| Cell/tissue expression | B-cells |
| Antibody research areas | Cancer, Immunology, Inflammation |
| Tumor expression | Leukemia/lymphoma |

| Antibody # prefix | Conjugation | Ex/Em (nm) | Laser line | Detection channel | Dye Features |
|-------------------|--------------------|------------|------------|--------------------------|----------------------------------|
| BNC04 | CF®405S | 404/431 | 405 | DAPI (microscopy), AF405 | CF®405S Features |
| BNC88 | CF®488A | 490/515 | 488 | GFP, FITC | CF®488A Features |
| BNC68 | CF®568 | 562/583 | 532, 561 | RFP, TRITC | CF®568 Features |
| BNC94 | CF®594 | 593/614 | 561 | Texas Red® | CF®594 Features |
| BNC40 | CF®640R | 642/662 | 633-640 | Cy®5 | CF®640R Features |
| BNC47 | CF®647 | 650/665 | 633-640 | Cy®5 | CF®647 Features |
| BNC74 | CF®740 | 742/767 | 633-685 | 775/50 | CF®740 Features |
| BNCB | Biotin | N/A | N/A | N/A | |
| BNUB | Purified | N/A | N/A | N/A | |
| BNUM | Purified, BSA-free | N/A | N/A | N/A | |

Alexa Fluor, Pacific Blue, Pacific Orange, and Texas Red are trademarks or registered trademarks of Thermo Fisher Scientific; Cy is a registered trademark of Cytiva; IRDye, LI-COR, and Odyssey are registered trademarks of LI-COR Bioscience.

This datasheet was generated on September 17, 2025 at 07:10:08 PM. Visit product page to check for updated information before use.
Product link: <https://biotium.com/product/human-igm-immunoglobulin-recombinant-monoclonal-rabbit-antibody-ighm-3776r/>