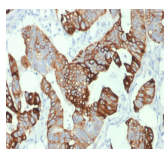


# Cytokeratin 20 Monoclonal Mouse Antibody (KRT20/1993)



## Product Description

This MAbs recognizes an intermediate filament protein of 46 kDa, identified as cytokeratin 20 (KRT20). KRT is abundantly expressed in goblet cells and enterocytes of the gastrointestinal tract. It is a useful marker of pancreatic and colorectal cancer. KRT20 is expressed under normal, hyperplastic and neoplastic conditions. It has been detected in adenocarcinomas of the colon, stomach and biliary tract. Breast carcinomas are generally non-reactive.

Primary antibodies are available purified, or with a selection of fluorescent CF® dyes and other labels. CF® dyes offer exceptional brightness and photostability. See the [CF® Dye Brochure](#) for more information. Note: Conjugates of blue fluorescent dyes like CF®405S and CF®405M are not recommended for detecting low abundance targets, because blue dyes have lower fluorescence and can give higher non-specific background than other dye colors.

**Stock status:** Because Biotium offers a large number of antibody and conjugation options, primary antibody conjugates may be made to order. Typical lead times are up to one week for CF® dye and biotin conjugates, and up to 2-3 weeks for fluorescent protein and enzyme conjugates. Please email [order@biotium.com](mailto:order@biotium.com) to inquire about stock status and lead times before placing your order.

**Catalog number key for antibody number 1993, Anti-Cytokeratin 20|KRT20 (KRT20/1993)**

Call us : [800-304-5357](tel:800-304-5357)

## Product attributes

<b>Antibody number</b>	#1993
<b>Antibody reactivity (target)</b>	Cytokeratin 20, KRT20
<b>Antibody type</b>	Primary
<b>Host species</b>	Mouse
<b>Clonality</b>	Monoclonal
<b>Clone</b>	KRT20/1993
<b>Isotype</b>	IgG2b, kappa
<b>Molecular weight of antigen</b>	46 kDa
<b>Synonyms</b>	CK20; Cytokeratin-20; K20; KA20; Keratin 20; keratin 20; type I; Keratin type I cytoskeletal 20; Keratin-20; KRT20
<b>Human gene symbol</b>	KRT20
<b>Entrez gene ID</b>	54474
<b>SwissProt</b>	P35900
<b>Unigene</b>	84905
<b>Immunogen</b>	Recombinant fragment of human KRT20 protein (around aa 196-323) (exact sequence is proprietary)
<b>Antibody target cellular localization</b>	Cytoskeleton
<b>Verified antibody applications</b>	IHC (FFPE) (verified), WB (verified)
<b>Species reactivity</b>	Human
<b>Positive control</b>	HT29 cells, Colon Carcinoma.
<b>Shipping condition</b>	Room temperature
<b>Storage Conditions</b>	Store at 2 to 8 °C, Protect fluorescent conjugates from light, Note: store BSA-free antibodies at -10 to -35 °C
<b>Regulatory status</b>	For research use only (RUO)
<b>Antibody/conjugate formulation</b>	Conjugates: 0.1 mg/mL in PBS/0.1% BSA/0.05% azide, HRP conjugates: 0.1 mg/mL in PBS/0.05% BSA, Purified: 0.2 mg/mL in PBS/0.05% BSA/0.05% azide, Purified, BSA-free: 1 mg/mL in PBS without azide
<b>Validated in protein array</b>	Monospecific
<b>Shelf life</b>	Guaranteed for at least 24 months from date of receipt when stored as recommended
<b>Product origin</b>	Product may contain either bovine serum albumin (BSA) from bovine serum (Bos taurus), or recombinant BSA produced in Chinese hamster ovary cells. Inquire for the specific lot.
<b>Cell/tissue expression</b>	Goblet cells, Intestine
<b>Antibody research areas</b>	Cancer, Cytoskeleton
<b>Tumor expression</b>	Gastrointestinal cancer, Pancreatic cancer

Antibody # prefix	Conjugation	Ex/Em (nm)	Laser line	Detection channel	Dye Features
BNC04	CF®405S	404/431	405	DAPI (microscopy), AF405	<a href="#">CF®405S Features</a>
BNC88	CF®488A	490/515	488	GFP, FITC	<a href="#">CF®488A Features</a>
BNC68	CF®568	562/583	532, 561	RFP, TRITC	<a href="#">CF®568 Features</a>
BNC94	CF®594	593/614	561	Texas Red®	<a href="#">CF®594 Features</a>
BNC40	CF®640R	642/662	633-640	Cy®5	<a href="#">CF®640R Features</a>
BNC47	CF®647	650/665	633-640	Cy®5	<a href="#">CF®647 Features</a>
BNC74	CF®740	742/767	633-685	775/50	<a href="#">CF®740 Features</a>
BNCB	Biotin	N/A	N/A	N/A	
BNUB	Purified	N/A	N/A	N/A	
BNUM	Purified, BSA-free	N/A	N/A	N/A	

Alexa Fluor, Pacific Blue, Pacific Orange, and Texas Red are trademarks or registered trademarks of Thermo Fisher Scientific; Cy is a registered trademark of Cytiva; IRDye, LI-COR, and Odyssey are registered trademarks of LI-COR Bioscience.

This datasheet was generated on June 7, 2026 at 07:30:34 PM. Visit product page to check for updated information before use.

Product link: <https://biotium.com/product/cytokeratin-20-monoclonal-mouse-antibody-krt20-1993/>