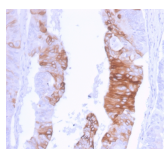


Cytokeratin 20 Recombinant Monoclonal Rabbit Antibody (KRT20/3129R)



Product Description

This MAbs recognizes an intermediate filament protein of 46 kDa, identified as cytokeratin 20 (KRT20). KRT20 is abundantly expressed in goblet cells and enterocytes of the gastrointestinal tract. It is a useful marker of pancreatic and colorectal cancer. KRT20 is expressed under normal, hyperplastic and neoplastic conditions. It has been detected in adenocarcinomas of the colon, stomach and biliary tract. Breast carcinomas are generally non-reactive.

Primary antibodies are available purified, or with a selection of fluorescent CF® dyes and other labels. CF® dyes offer exceptional brightness and photostability. See the [CF® Dye Brochure](#) for more information. Note: Conjugates of blue fluorescent dyes like CF®405S and CF®405M are not recommended for detecting low abundance targets, because blue dyes have lower fluorescence and can give higher non-specific background than other dye colors.

Stock status: Because Biotium offers a large number of antibody and conjugation options, primary antibody conjugates may be made to order. Typical lead times are up to one week for CF® dye and biotin conjugates, and up to 2-3 weeks for fluorescent protein and enzyme conjugates. Please email order@biotium.com to inquire about stock status and lead times before placing your order.

Catalog number key for antibody number 3129, Anti-Cytokeratin 20 (KRT20/3129R)

Call us : [800-304-5357](tel:800-304-5357)

Product attributes

| | |
|---------------------------------------|---|
| Antibody number | #3129 |
| Antibody reactivity (target) | Cytokeratin 20 |
| Antibody type | Primary |
| Host species | Rabbit |
| Clonality | Recombinant Monoclonal |
| Clone | KRT20/3129R |
| Isotype | IgG |
| Molecular weight | 46 kDa |
| Synonyms | CK20; Cytokeratin-20; K20; KA20; Keratin 20; keratin 20; type I; Keratin type I cytoskeletal 20; Keratin-20; KRT20 |
| Human gene symbol | KRT20 |
| Entrez gene ID | 54474 |
| SwissProt | P35900 |
| Unigene | 84905 |
| Immunogen | Recombinant fragment of human KRT20 protein (around aa 196-323) (exact sequence is proprietary) |
| Verified antibody applications | IHC (FFPE) (verified), WB (verified) |
| Antibody target cellular localization | Cytoskeleton |
| Species reactivity | Human |
| Positive control | HT29 cell lysate (WB). Human colon carcinoma (IHC). |
| Shipping condition | Room temperature |
| Storage Conditions | Store at 2 to 8 °C. Protect fluorescent conjugates from light. Note: store BSA-free antibodies at -10 to -35 °C |
| Regulatory status | For research use only (RUO) |
| Antibody/conjugate formulation | Conjugates: 0.1 mg/mL in PBS/0.1% BSA/0.05% azide, HRP conjugates: 0.1 mg/mL in PBS/0.05% BSA, Purified: 0.2 mg/mL in PBS/0.05% BSA/0.05% azide, Purified, BSA-free: 1 mg/mL in PBS without azide |
| Shelf life | Guaranteed for at least 24 months from date of receipt when stored as recommended |
| Product origin | Product may contain either bovine serum albumin (BSA) from bovine serum (Bos taurus), or recombinant BSA produced in Chinese hamster ovary cells. Inquire for the specific lot. |
| Cell/tissue expression | Goblet cells, Intestine |
| Antibody research areas | Cancer, Cytoskeleton |
| Tumor expression | Gastrointestinal cancer, Pancreatic cancer |

| Antibody # prefix | Conjugation | Ex/Em (nm) | Laser line | Detection channel | Dye Features |
|-------------------|--------------------|------------|------------|--------------------------|----------------------------------|
| BNC04 | CF®405S | 404/431 | 405 | DAPI (microscopy), AF405 | CF®405S Features |
| BNC88 | CF®488A | 490/515 | 488 | GFP, FITC | CF®488A Features |
| BNC68 | CF®568 | 562/583 | 532, 561 | RFP, TRITC | CF®568 Features |
| BNC94 | CF®594 | 593/614 | 561 | Texas Red® | CF®594 Features |
| BNC40 | CF®640R | 642/662 | 633-640 | Cy®5 | CF®640R Features |
| BNC47 | CF®647 | 650/665 | 633-640 | Cy®5 | CF®647 Features |
| BNC74 | CF®740 | 742/767 | 633-685 | 775/50 | CF®740 Features |
| BNCB | Biotin | N/A | N/A | N/A | |
| BNUB | Purified | N/A | N/A | N/A | |
| BNUM | Purified, BSA-free | N/A | N/A | N/A | |

Alexa Fluor, Pacific Blue, Pacific Orange, and Texas Red are trademarks or registered trademarks of Thermo Fisher Scientific; Cy is a registered trademark of Cytiva; IRDye, LI-COR, and Odyssey are registered trademarks of LI-COR Bioscience.

This datasheet was generated on January 6, 2026 at 08:50:48 PM. Visit product page to check for updated information before use.
Product link: <https://biotium.com/product/cytokeratin-20-recombinant-monoclonal-rabbit-antibody-krt20-3129r/>