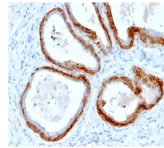


# Cytokeratin, Basic Recombinant Monoclonal Rabbit Antibody (KRTH/2147R)



## Product Description

This antibody recognizes CK1, CK5, CK10 and CK14. In normal epithelia, it stains stratified epithelia, myoepithelial cells and basal cells in the prostate gland and bronchi. This MAb shows no reactivity with hepatocytes, pancreatic acinar cells, proximal renal tubules, or endometrial glands; there is no reactivity with cells derived from simple epithelia. Mesenchymal tumors, lymphomas, melanomas, neural tumors, and neuroendocrine tumors are negative with this antibody. It stains myoepithelial cells and has been shown to be useful in distinguishing prostate adenocarcinoma from benign prostate. This antibody has also been useful in separating benign from malignant intraductal breast proliferations. Primary antibodies are available purified, or with a selection of fluorescent CF® dyes and other labels. CF® dyes offer exceptional brightness and photostability. See the [CF® Dye Brochure](#) for more information. Note: Conjugates of blue fluorescent dyes like CF®405S and CF®405M are not recommended for detecting low abundance targets, because blue dyes have lower fluorescence and can give higher non-specific background than other dye colors. **Stock status:** Because Biotium offers a large number of antibody and conjugation options, primary antibody conjugates may be made to order. Typical lead times are up to one week for CF® dye and biotin conjugates, and up to 2-3 weeks for fluorescent protein and enzyme conjugates. Please email [order@biotium.com](mailto:order@biotium.com) to inquire about stock status and lead times before placing your order.

## Product attributes

Antibody number	#2147
Antibody reactivity (target)	Cytokeratin, Basic
Antibody type	Primary
Host species	Rabbit
Clonality	Recombinant Monoclonal
Clone	KRTH/2147R
Isotype	IgG
Molecular weight	50-67 kDa
Synonyms	KRT2B; KRT2P; HUMCYT2A; Keratin; type II Cytoskeletal 2 oral; K76; Keratin 2p (K2P); Keratin-76; Cytokeratin-2P (CK-2P; Type-II Keratin Kb9
Human gene symbol	KRT76
Entrez gene ID	51350
SwissProt	Q01546
Unigene	654392
Immunogen	Solubilized keratin extract from human stratum corneum
Verified antibody applications	IF (verified), IHC (FFPE) (verified)
Antibody target cellular localization	Cytoskeleton
Species reactivity	Human, Mouse, Rat
Positive control	MCF-7, PC12 cells, Skin, Prostate carcinoma.
Shipping condition	Room temperature
Storage Conditions	Store at 2 to 8 °C, Protect fluorescent conjugates from light, Note: store BSA-free antibodies at -10 to -35 °C
Regulatory status	For research use only (RUO)
Antibody/conjugate formulation	Conjugates: 0.1 mg/mL in PBS/0.1% BSA/0.05% azide, HRP conjugates: 0.1 mg/mL in PBS/0.05% BSA, Purified: 0.2 mg/mL in PBS/0.05% BSA/0.05% azide, Purified, BSA-free: 1 mg/mL in PBS without azide
Shelf life	Guaranteed for at least 24 months from date of receipt when stored as recommended
Cell/tissue expression	Epidermal cells, Epithelial cells
Antibody research areas	Cancer, Cytoskeleton

Antibody # prefix	Conjugation	Ex/Em (nm)	Laser line	Detection channel
BNC04	CF®405S	404/431	405	DAPI (microscopy), AF405
BNC88	CF®488A	490/515	488	GFP, FITC
BNC68	CF®568	562/583	532, 561	RFP, TRITC
BNC94	CF®594	593/614	561	Texas Red®
BNC40	CF®640R	642/662	633-640	Cy®5
BNC47	CF®647	650/665	633-640	Cy®5
BNCB	Biotin	N/A	N/A	N/A
BNUB	Purified	N/A	N/A	N/A
BNUM	Purified, BSA-free	N/A	N/A	N/A

## Dye Features

- [CF®405S Features](#)
- [CF®488A Features](#)
- [CF®568 Features](#)
- [CF®594 Features](#)
- [CF®640R Features](#)
- [CF®647 Features](#)

Alexa Fluor, Pacific Blue, Pacific Orange, and Texas Red are trademarks or registered trademarks of Thermo Fisher Scientific; Cy is a registered trademark of Cytiva; IRDye, LI-COR, LI-COR Bioscience.

This datasheet was generated on July 22, 2024 at 04:17:40 PM. Visit product page to check for updated information before use.

Product link: <https://biotium.com/product/cytokeratin-basic-recombinant-monoclonal-rabbit-antibody-krth-2147r/>