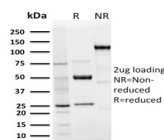


# Langerin / CD207 Recombinant Monoclonal Rabbit Antibody (LGRN/3136R)



## Product Description

Langerhans cells (LCs) are a subset of immature dendritic cells (DCs) that specifically localize in the epidermis and other mucosal epithelia. Epidermal LCs possess strong immuno-stimulatory capacity and play a central role in the initiation and regulation of immune responses. Langerin (CD207) is a Ca<sup>2+</sup>-dependent, C-type lectin domain containing, type II transmembrane protein that induces epidermal LCs to differentiate into Birbeck granules (BG). BGs are organelles with superimposing and zipper membranes that influence proper class I type antigen presentation to the circulating T cells. Human spleen, lymph node, thymus, liver, lung and heart express Langerin protein.

Primary antibodies are available purified, or with a selection of fluorescent CF<sup>®</sup> dyes and other labels. CF<sup>®</sup> dyes offer exceptional brightness and photostability. See the [CF<sup>®</sup> Dye Brochure](#) for more information. Note: Conjugates of blue fluorescent dyes like CF<sup>®</sup>405S and CF<sup>®</sup>405M are not recommended for detecting low abundance targets, because blue dyes have lower fluorescence and can give higher non-specific background than other dye colors.

**Stock status:** Because Biotium offers a large number of antibody and conjugation options, primary antibody conjugates may be made to order. Typical lead times are up to one week for CF<sup>®</sup> dye and biotin conjugates, and up to 2-3 weeks for fluorescent protein and enzyme conjugates. Please email [order@biotium.com](mailto:order@biotium.com) to inquire about stock status and lead times before placing your order.

**Catalog number key for antibody number 3136, Anti-CD207|Langerin (LGRN/3136R)**

## Product attributes

Antibody number	#3136
Antibody reactivity (target)	CD207, Langerin
Antibody type	Primary
Host species	Rabbit
Clonality	Recombinant Monoclonal
Clone	LGRN/3136R
Isotype	IgG
Molecular weight	48 kDa
Synonyms	C-type lectin domain family 4 member K; CD207; CLEC4K; Langerhans cell specific c type lectin; Langerin
Human gene symbol	CD207
Entrez gene ID	50489
SwissProt	Q9UJ71
Unigene	199731
Immunogen	Recombinant fragment (around aa74-213) of human Langerin protein (exact sequence is proprietary)
Antibody target cellular localization	Plasma membrane
Species reactivity	Human
Antibody application notes	For coating for ELISA, order Ab without BSA, Higher concentration may be required for direct detection using primary antibody conjugates than for indirect detection with secondary antibody, Optimal dilution and staining procedure for a specific application should be determined by user, Recommended starting concentrations for titration are 1-2 ug/mL for most applications, or 1 ug/million cells/100 uL for flow cytometry
Positive control	HeLa or A549 cells. Skin.
Shipping condition	Room temperature
Storage Conditions	Store at 2 to 8 °C, Protect fluorescent conjugates from light, Note: store BSA-free antibodies at -10 to -35 °C
Regulatory status	For research use only (RUO)
Antibody/conjugate formulation	Conjugates: 0.1 mg/mL in PBS/0.1% BSA/0.05% azide, HRP conjugates: 0.1 mg/mL in PBS/0.05% BSA, Purified: 0.2 mg/mL in PBS/0.05% BSA/0.05% azide, Purified, BSA-free: 1 mg/mL in PBS without azide
Shelf life	Guaranteed for at least 24 months from date of receipt when stored as recommended
Product origin	Product may contain either bovine serum albumin (BSA) from bovine serum (Bos taurus), or recombinant BSA produced in Chinese hamster ovary cells. Inquire for the specific lot.
Cell/tissue expression	Heart, Lymph node, Dendritic cells, Liver, Lung, Spleen, Thymus

Antibody # prefix	Conjugation	Ex/Em (nm)	Laser line	Detection channel	Dye Features
BNC04	CF <sup>®</sup> 405S	404/431	405	DAPI (microscopy), AF405	<a href="#">CF<sup>®</sup>405S Features</a>
BNC88	CF <sup>®</sup> 488A	490/515	488	GFP, FITC	<a href="#">CF<sup>®</sup>488A Features</a>
BNC68	CF <sup>®</sup> 568	562/583	532, 561	RFP, TRITC	<a href="#">CF<sup>®</sup>568 Features</a>
BNC94	CF <sup>®</sup> 594	593/614	561	Texas Red <sup>®</sup>	<a href="#">CF<sup>®</sup>594 Features</a>
BNC40	CF <sup>®</sup> 640R	642/662	633-640	Cy <sup>®</sup> 5	<a href="#">CF<sup>®</sup>640R Features</a>
BNC47	CF <sup>®</sup> 647	650/665	633-640	Cy <sup>®</sup> 5	<a href="#">CF<sup>®</sup>647 Features</a>
BNC74	CF <sup>®</sup> 740	742/767	633-685	775/50	<a href="#">CF<sup>®</sup>740 Features</a>
BNCB	Biotin	N/A	N/A	N/A	
BNUB	Purified	N/A	N/A	N/A	
BNUM	Purified, BSA-free	N/A	N/A	N/A	

Alexa Fluor, Pacific Blue, Pacific Orange, and Texas Red are trademarks or registered trademarks of Thermo Fisher Scientific; Cy is a registered trademark of Cytiva; IRDye, LI-COR, and Odyssey are registered trademarks of LI-COR Bioscience.

This datasheet was generated on July 16, 2025 at 08:57:40 AM. Visit product page to check for updated information before use.  
Product link: <https://biotium.com/product/langerin-cd207-recombinant-monoclonal-rabbit-antibody-lgrn-3136r/>