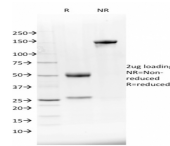


NKX2.8 Monoclonal Mouse Antibody (NKX28/2548)



Product Description

The protein encoded by this gene is a homeobox-containing developmental regulator associated with liver development. The encoded protein binds to the alpha-fetoprotein (AFP) gene promoter and increases the expression of AFP. This gene is overexpressed in some lung cancers and is linked to poor patient survival, possibly due to its resistance to cisplatin. This gene is aberrantly methylated in pancreatic cancer, deleted in squamous cell lung carcinomas, and acts as a tumor suppressor in esophageal cancer. Mutations in this gene may also be a cause of neural tube defects.

Primary antibodies are available purified, or with a selection of fluorescent CF® dyes and other labels. CF® dyes offer exceptional brightness and photostability. See the [CF® Dye Brochure](#) for more information. Note: Conjugates of blue fluorescent dyes like CF®405S and CF®405M are not recommended for detecting low abundance targets, because blue dyes have lower fluorescence and can give higher non-specific background than other dye colors.

Stock status: Because Biotium offers a large number of antibody and conjugation options, primary antibody conjugates may be made to order. Typical lead times are up to one week for CF® dye and biotin conjugates, and up to 2-3 weeks for fluorescent protein and enzyme conjugates. Please email order@biotium.com to inquire about stock status and lead times before placing your order.

Product attributes

Antibody number	#2548
Antibody reactivity (target)	NKX2.8
Antibody type	Primary
Host species	Mouse
Clonality	Monoclonal
Clone	NKX28/2548
Isotype	IgG1, kappa
Molecular weight	26 kDa
Synonyms	Homeobox protein NK 2 homolog H; Homeobox protein NK-2 homolog H; Homeobox protein Nkx 2.8; Homeobox protein Nkx-2.8; NK 2 homolog 8; NK 2 homolog H; NK2 homeobox 8; NK2 transcription factor related, locus 8; Nkx2 9; Nkx2-8; NKX2.8; NKX28_HUMAN; NKX2G; NKX2H; OTTHUMP0000027959
Human gene symbol	NKX2-8
Entrez gene ID	26257
SwissProt	O15522
Unigene	234763
Immunogen	Human recombinant NKX2.8 protein fragment (around aa 10-123) (exact sequence is proprietary)
Verified antibody applications	WB (verified)
Antibody target cellular localization	Nucleus & cytoplasm
Species reactivity	Human
Antibody application notes	ELISA: For coating, order antibody without BSA; Flow cytometry: 1-2 ug/million cells; Western blot 0.5-1 ug/mL; Optimal dilution for a specific application should be determined., Higher concentration may be required for direct detection using primary antibody conjugates than for indirect detection with secondary antibody
Positive control	Human Liver, Kidney or Thyroid tissue (IHC).
Shipping condition	Room temperature
Storage Conditions	Store at 2 to 8 °C, Protect fluorescent conjugates from light, Note: store BSA-free antibodies at -10 to -35 °C
Regulatory status	For research use only (RUO)
Antibody/conjugate formulation	Conjugates: 0.1 mg/mL in PBS/0.1% BSA/0.05% azide, HRP conjugates: 0.1 mg/mL in PBS/0.05% BSA, Purified: 0.2 mg/mL in PBS/0.05% BSA/0.05% azide, Purified, BSA-free: 1 mg/mL in PBS without azide
Shelf life	Guaranteed for at least 24 months from date of receipt when stored as recommended

Antibody # prefix	Conjugation	Ex/Em (nm)	Laser line	Detection channel
BNC04	CF®405S	404/431	405	DAPI (microscopy), AF405
BNC88	CF®488A	490/515	488	GFP, FITC
BNC68	CF®568	562/583	532, 561	RFP, TRITC
BNC94	CF®594	593/614	561	Texas Red®
BNC40	CF®640R	642/662	633-640	Cy®5
BNC47	CF®647	650/665	633-640	Cy®5
BNCB	Biotin	N/A	N/A	N/A
BNUB	Purified	N/A	N/A	N/A
BNUM	Purified, BSA-free	N/A	N/A	N/A

Dye Features

- [CF®405S Features](#)
- [CF®488A Features](#)
- [CF®568 Features](#)
- [CF®594 Features](#)
- [CF®640R Features](#)
- [CF®647 Features](#)

Alexa Fluor, Pacific Blue, Pacific Orange, and Texas Red are trademarks or registered trademarks of Thermo Fisher Scientific; Cy is a registered trademark of Cytiva; IRDye, LI-COR, of LI-COR Bioscience.