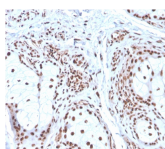


Nucleophosmin Monoclonal Mouse Antibody (NPM1/3286)



Product Description

Recognizes a 33 kDa glycoprotein, identified as Nucleophosmin (NPM). It is predominantly localized in the nucleus of cells in most tissues. NPM is involved in ribosomal assembly and rRNA transport. It is an abundant protein that is highly phosphorylated by Cdc2 kinase during mitosis. This phosphoprotein moves between the nucleus and the cytoplasm. It is thought to be involved in several processes including regulation of the ARF/p53 pathway. A number of genes are fusion partners, in particular the anaplastic lymphoma kinase gene on chromosome 2. Mutations in exon 12 affecting the C-terminus of the protein are associated with an aberrant cytoplasmic location. Mutations in this gene are associated with acute myeloid leukemia. The antibody may be a useful aid for classification of acute myeloid leukemia.

Primary antibodies are available purified, or with a selection of fluorescent CF® dyes and other labels. CF® dyes offer exceptional brightness and photostability. See the [CF® Dye Brochure](#) for more information. Note: Conjugates of blue fluorescent dyes like CF®405S and CF®405M are not recommended for detecting low abundance targets, because blue dyes have lower fluorescence and can give higher non-specific background than other dye colors.

Stock status: Because Biotium offers a large number of antibody and conjugation options, primary antibody conjugates may be made to order. Typical lead times are up to one week for CF® dye and biotin conjugates, and up to 2-3 weeks for fluorescent protein and enzyme conjugates. Please email order@biotium.com to inquire about stock status and lead times before placing your order.

Catalog number key for antibody number 3286, Anti-Nucleophosmin (NPM1/3286)

Call us : [800-304-5357](tel:800-304-5357)

Product attributes

Antibody number	#3286
Antibody reactivity (target)	Nucleophosmin
Antibody type	Primary
Host species	Mouse
Clonality	Monoclonal
Clone	NPM1/3286
Isotype	IgG1, kappa
Molecular weight of antigen	33 kDa
Synonyms	NO38; NPM; NPM1; Nucleolar phosphoprotein B23; Nucleolar protein NO38; Nucleophosmin (nucleolar phosphoprotein B23 numatrin); Nucleophosmin; Nucleophosmin/nucleoplasm family member 1; Numatrin
Human gene symbol	NPM1
Entrez gene ID	4869
SwissProt	P06748
Unigene	557550
Immunogen	Recombinant human NPM1 protein fragment (aa185-287) (exact sequence is proprietary)
Verified antibody applications	Flow (intracellular) (verified), IF (verified), IHC (FFPE) (verified), WB (verified)
Antibody target cellular localization	Nucleus & cytoplasm
Species reactivity	Human
Positive control	K562 cells, Human colon or skin tissues (IHC).
Shipping condition	Room temperature
Storage Conditions	Store at 2 to 8 °C, Protect fluorescent conjugates from light, Note: store BSA-free antibodies at -10 to -35 °C
Regulatory status	For research use only (RUO)
Antibody/conjugate formulation	Conjugates: 0.1 mg/mL in PBS/0.1% BSA/0.05% azide, HRP conjugates: 0.1 mg/mL in PBS/0.05% BSA, Purified: 0.2 mg/mL in PBS/0.05% BSA/0.05% azide, Purified, BSA-free: 1 mg/mL in PBS without azide
Validated in protein array	Monospecific
Shelf life	Guaranteed for at least 24 months from date of receipt when stored as recommended
Product origin	Product may contain either bovine serum albumin (BSA) from bovine serum (Bos taurus), or recombinant BSA produced in Chinese hamster ovary cells. Inquire for the specific lot.
Tumor expression	Leukemia/lymphoma

Antibody # prefix	Conjugation	Ex/Em (nm)	Laser line	Detection channel	Dye Features
BNC04	CF®405S	404/431	405	DAPI (microscopy), AF405	CF®405S Features
BNC88	CF®488A	490/515	488	GFP, FITC	CF®488A Features
BNC68	CF®568	562/583	532, 561	RFP, TRITC	CF®568 Features
BNC94	CF®594	593/614	561	Texas Red®	CF®594 Features
BNC40	CF®640R	642/662	633-640	Cy®5	CF®640R Features
BNC47	CF®647	650/665	633-640	Cy®5	CF®647 Features
BNC74	CF®740	742/767	633-685	775/50	CF®740 Features
BNCB	Biotin	N/A	N/A	N/A	
BNUB	Purified	N/A	N/A	N/A	
BNUM	Purified, BSA-free	N/A	N/A	N/A	

Alexa Fluor, Pacific Blue, Pacific Orange, and Texas Red are trademarks or registered trademarks of Thermo Fisher Scientific; Cy is a registered trademark of Cytiva; IRDye, LI-COR, and Odyssey are registered trademarks of LI-COR Bioscience.

This datasheet was generated on June 21, 2026 at 02:59:58 PM. Visit product page to check for updated information before use.

Product link: <https://biotium.com/product/nucleophosmin-monoclonal-mouse-antibody-npm1-3286/>