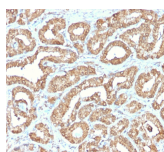


# Ornithine Decarboxylase-1 Recombinant Monoclonal Rabbit Antibody (ODC1/2878R)



## Product Description

Recognizes a 53 kDa protein, identified as the Ornithine Decarboxylase (ODC-1). ODC is the initial and rate-limiting enzyme in the biosynthetic pathway of polyamines and is involved in the conversion of ornithine to putrescine. The biological activity of ODC-1 is rapidly induced in response to virtually all agents known to promote cell proliferation including hormones, drugs, growth factors, mitogens, and tumor promoters. Reportedly, ODC mRNA levels are elevated in lung carcinomas as well as in colon adenomas and carcinomas. ODC activity in colorectal carcinomas is greater than those in adenomas and normal mucosa.

Primary antibodies are available purified, or with a selection of fluorescent CF® dyes and other labels. CF® dyes offer exceptional brightness and photostability. See the [CF® Dye Brochure](#) for more information. Note: Conjugates of blue fluorescent dyes like CF®405S and CF®405M are not recommended for detecting low abundance targets, because blue dyes have lower fluorescence and can give higher non-specific background than other dye colors.

**Stock status:** Because Biotium offers a large number of antibody and conjugation options, primary antibody conjugates may be made to order. Typical lead times are up to one week for CF® dye and biotin conjugates, and up to 2-3 weeks for fluorescent protein and enzyme conjugates. Please email [order@biotium.com](mailto:order@biotium.com) to inquire about stock status and lead times before placing your order.

**Catalog number key for antibody number 2878, Anti-Ornithine Decarboxylase 1 (ODC1/2878R)**

## Product attributes

<b>Antibody number</b>	#2878
<b>Antibody reactivity (target)</b>	Ornithine Decarboxylase 1
<b>Antibody type</b>	Primary
<b>Host species</b>	Rabbit
<b>Clonality</b>	Monoclonal, Recombinant Monoclonal
<b>Clone</b>	ODC1/2878R
<b>Isotype</b>	IgG
<b>Molecular weight of antigen</b>	53 kDa
<b>Synonyms</b>	Ornithine decarboxylase structural 1; RNODC
<b>Human gene symbol</b>	ODC1
<b>Entrez gene ID</b>	4953
<b>SwissProt</b>	P11926
<b>Unigene</b>	467701
<b>Immunogen</b>	Recombinant full-length human ODC-1 protein
<b>Verified antibody applications</b>	IHC (FFPE) (verified), WB (verified)
<b>Antibody target cellular localization</b>	Cytoplasmic
<b>Species reactivity</b>	Human, Mouse, Rat
<b>Positive control</b>	PC3 cells, Placenta, Prostate or Testicular carcinoma.
<b>Shipping condition</b>	Room temperature
<b>Storage Conditions</b>	Store at 2 to 8 °C, Protect fluorescent conjugates from light, Note: store BSA-free antibodies at -10 to -35 °C
<b>Regulatory status</b>	For research use only (RUO)
<b>Antibody/conjugate formulation</b>	Conjugates: 0.1 mg/mL in PBS/0.1% BSA/0.05% azide, HRP conjugates: 0.1 mg/mL in PBS/0.05% BSA, Purified: 0.2 mg/mL in PBS/0.05% BSA/0.05% azide, Purified, BSA-free: 1 mg/mL in PBS without azide
<b>Shelf life</b>	Guaranteed for at least 24 months from date of receipt when stored as recommended
<b>Product origin</b>	Product may contain either bovine serum albumin (BSA) from bovine serum ( <i>Bos taurus</i> ), or recombinant BSA produced in Chinese hamster ovary cells. Inquire for the specific lot.
<b>Tumor expression</b>	Colorectal cancer, Lung cancer

Antibody # prefix	Conjugation	Ex/Em (nm)	Laser line	Detection channel	Dye Features
BNC04	CF®405S	404/431	405	DAPI (microscopy), AF405	<a href="#">CF®405S Features</a>
BNC88	CF®488A	490/515	488	GFP, FITC	<a href="#">CF®488A Features</a>
BNC68	CF®568	562/583	532, 561	RFP, TRITC	<a href="#">CF®568 Features</a>
BNC94	CF®594	593/614	561	Texas Red®	<a href="#">CF®594 Features</a>
BNC40	CF®640R	642/662	633-640	Cy®5	<a href="#">CF®640R Features</a>
BNC47	CF®647	650/665	633-640	Cy®5	<a href="#">CF®647 Features</a>
BNC74	CF®740	742/767	633-685	775/50	<a href="#">CF®740 Features</a>
BNCB	Biotin	N/A	N/A	N/A	
BNUB	Purified	N/A	N/A	N/A	
BNUM	Purified, BSA-free	N/A	N/A	N/A	

Alexa Fluor, Pacific Blue, Pacific Orange, and Texas Red are trademarks or registered trademarks of Thermo Fisher Scientific; Cy is a registered trademark of Cytiva; IRDye, LI-COR, and Odyssey are registered trademarks of LI-COR Bioscience.

This datasheet was generated on June 4, 2026 at 02:56:17 PM. Visit product page to check for updated information before use.

Product link: <https://biotium.com/product/ornithine-decarboxylase-1-recombinant-monoclonal-rabbit-antibody-odc1-2878r/>